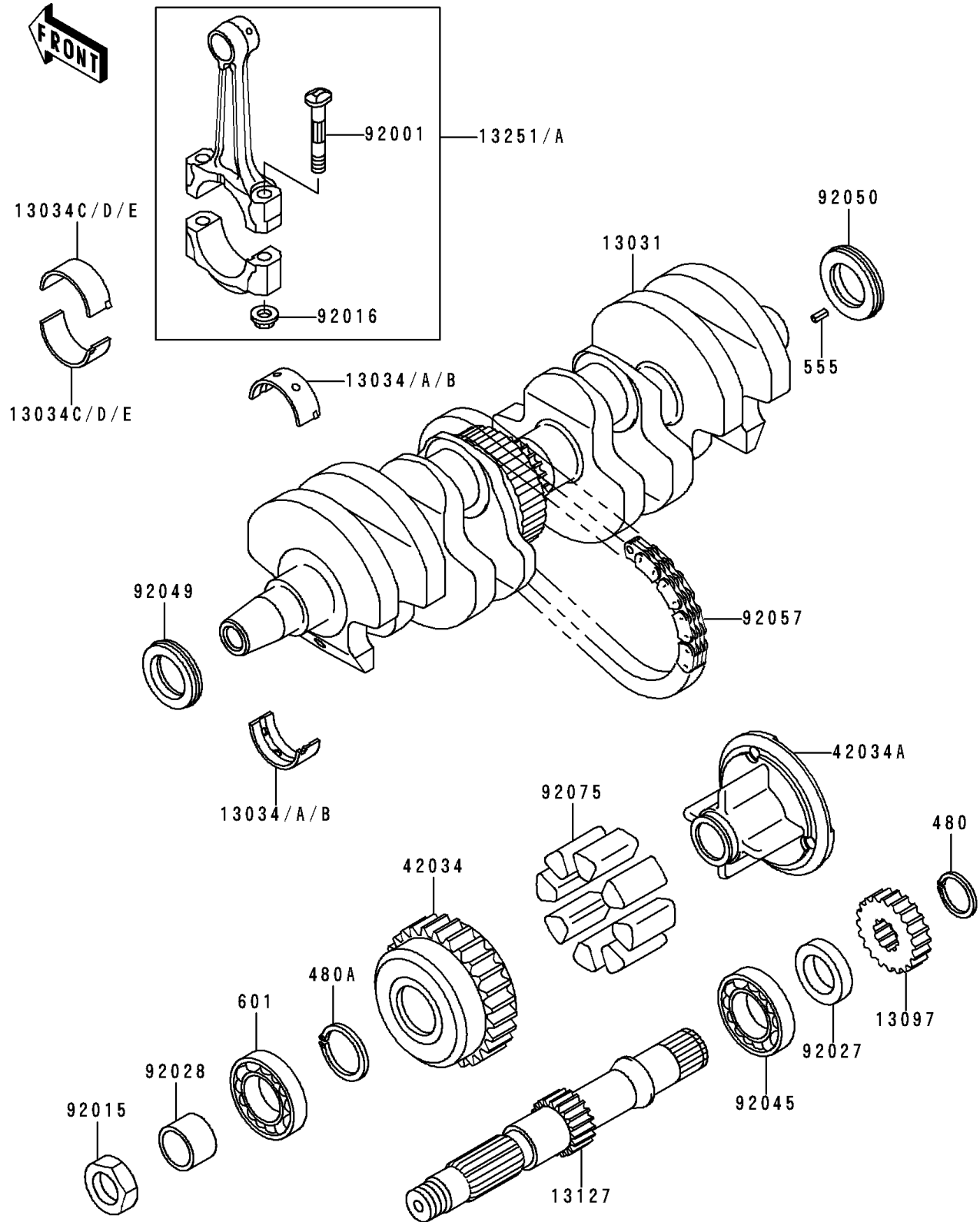


# 1992 Zephyr PARTS DIAGRAM

Crankshaft

E1321



# 1992 Zephyr PARTS LIST

## Crankshaft

ITEM NAME	PART NUMBER	QUANTITY
CIRCLIP-TYPE-C,22MM (Ref # 480)	480J2200	1
CIRCLIP-TYPE-C,28MM (Ref # 480A)	480J2800	1
PIN-SPRING,4X8 (Ref # 555)	555A0408	1
BEARING-BALL,#6205C3 (Ref # 601)	601B6205	1
CRANKSHAFT-COMP (Ref # 13031)	13031-1014	1
METAL,CRANKSHAFT,BROWN (Ref # 13034)	13034-1016	10
METAL,CRANKSHAFT,BLACK (Ref # 13034A)	13034-1017	AR
METAL,CRANKSHAFT,BLUE (Ref # 13034B)	13034-1018	AR
BUSHING,CONNECTING ROD,BLUE (Ref # 13034C)	13034-1067	8
BUSHING,CONNECTING ROD,BLACK (Ref # 13034D)	13034-1068	AR
BUSHING,CONNECTING ROD,BROWN (Ref # 13034E)	13034-1069	AR
GEAR-PRIMARY SPUR,26T (Ref # 13097)	13097-1008	1
SHAFT,SECONDARY (Ref # 13127)	13127-1007	1
ROD-ASSY-CONNECTING (Ref # 13251)	13251-1004-EE	4
ROD-ASSY-CONNECTING (Ref # 13251A)	13251-1004-GG	4
COUPLING,OUTER,SECONDARY SHAFT (Ref # 42034)	42034-1004	1
COUPLING,INNER,SECONDARY SHAFT (Ref # 42034A)	42034-1005	1
BOLT,CONNECTING ROD,7MM (Ref # 92001)	92001-1053	8
NUT,18MM (Ref # 92015)	92015-019	1
NUT,7MM (Ref # 92016)	92016-060	8
COLLAR,22X34X7.3 (Ref # 92027)	92027-1438	1
BUSHING,20X25X16.6 (Ref # 92028)	92028-1037	1
BEARING-BALL,#63/22X (Ref # 92045)	92045-1017	1
SEAL-OIL,HSCY25367 (Ref # 92049)	92049-1013	1
SEAL-OIL,HSCY25397 (Ref # 92050)	92050-081	1
CHAIN,PRIMARY,MA0364X50L (Ref # 92057)	92057-1011	1
DAMPER,COUPLING (Ref # 92075)	92075-1070	8