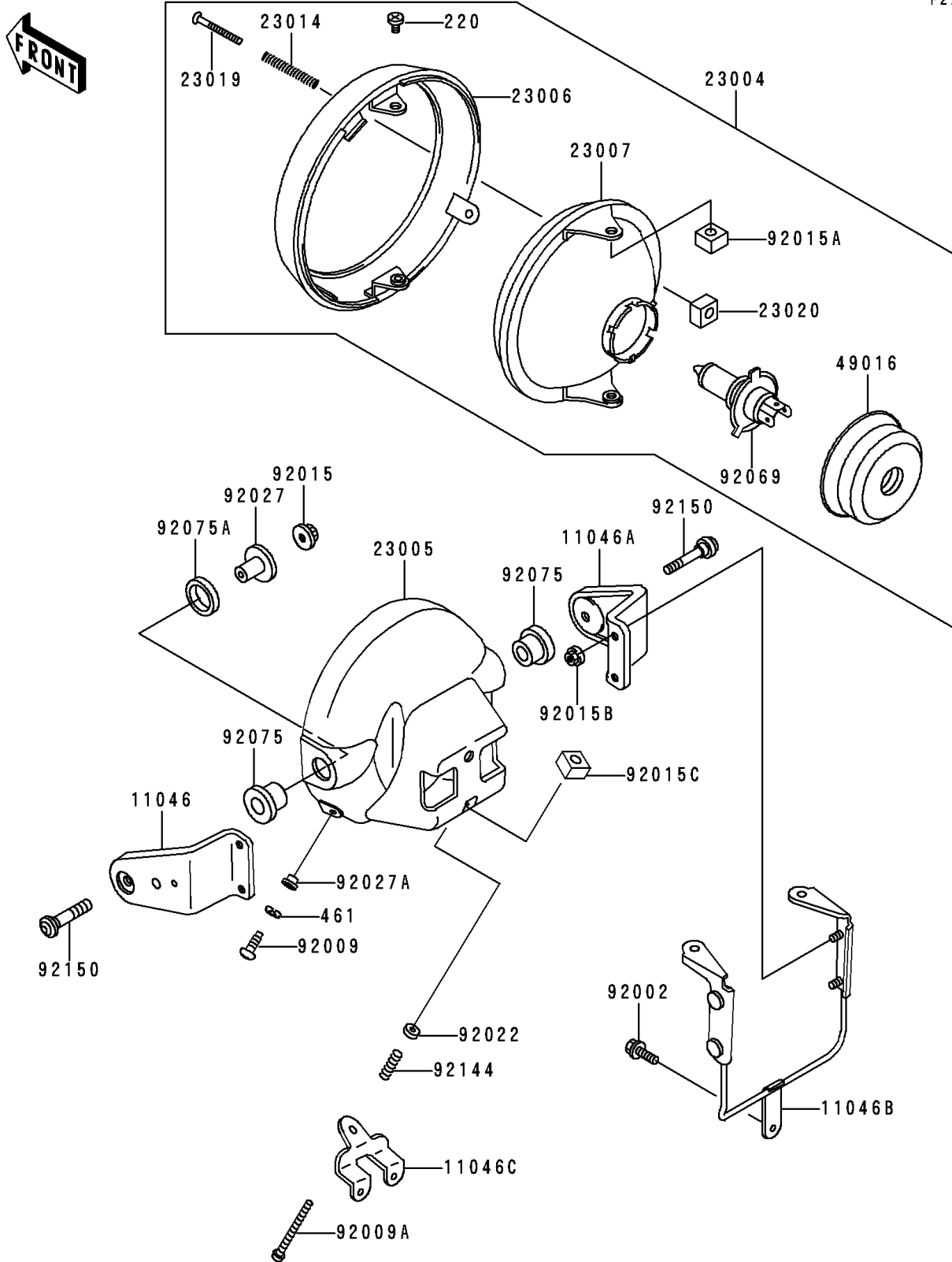


1992 Zephyr PARTS DIAGRAM

Head Lamp

F2710



1992 Zephyr PARTS LIST

Head Lamp

| ITEM NAME | PART NUMBER | QUANTITY |
|---|---------------|----------|
| SCREW-PAN-CROS (Ref # 220) | 220D0510 | 2 |
| WASHER-SPRING,5MM,BLACK (Ref # 461) | 461K0500 | 2 |
| BRACKET,HEAD LAMP,LH (Ref # 11046) | 11046-1747 | 1 |
| BRACKET,HEAD LAMP,RH (Ref # 11046A) | 11046-1748 | 1 |
| BRACKET,HEAD LAMP (Ref # 11046B) | 11046-1779 | 1 |
| BRACKET,HEAD LAMP BODY (Ref # 11046C) | 11046-1796 | 1 |
| LAMP-HEAD (Ref # 23004) | 23004-1275 | 1 |
| BODY-COMP-HEAD LAMP,F.BLACK (Ref # 23005) | 23005-1102-21 | 1 |
| RIM-LAMP,CR PLATED (Ref # 23006) | 23006-1020 | 1 |
| LENS-COMP,HEAD LAMP (Ref # 23007) | 23007-1224 | 1 |
| SPRING,FOCUS ADJUSTING (Ref # 23014) | 23014-005 | 1 |
| SCREW,FOCUS ADJUSTING (Ref # 23019) | 23019-021 | 1 |
| NUT,4MM,FOCUS ADJUST (Ref # 23020) | 23020-018 | 1 |
| COVER-SEAL,HEAD LAMP (Ref # 49016) | 49016-1046 | 1 |
| BOLT (Ref # 92002) | 92002-1626 | 1 |
| SCREW,5X16 (Ref # 92009) | 92009-1157 | 2 |
| SCREW,ADJUST (Ref # 92009A) | 92009-1580 | 1 |
| NUT,FLANGED,8MM (Ref # 92015) | 92015-1014 | 2 |
| NUT,5MM (Ref # 92015A) | 92015-1157 | 2 |
| NUT,CAP,6MM,BLACK (Ref # 92015B) | 92015-1170 | 4 |
| NUT,5MM,FOCUS ADJUST (Ref # 92015C) | 92015-1799 | 1 |
| WASHER,5.2X13X1 (Ref # 92022) | 92022-1380 | 1 |
| COLLAR,L=20 (Ref # 92027) | 92027-1131 | 2 |
| COLLAR,HEAD LAMP,BLACK (Ref # 92027A) | 92027-1503 | 2 |
| BULB,12V 60/55W,H4 (Ref # 92069) | 92069-1002 | 1 |
| DAMPER,HEAD LAMP FITTING (Ref # 92075) | 92075-1109 | 2 |
| DAMPER,HEAD LAMP FITTING (Ref # 92075A) | 92075-1110 | 2 |
| SPRING (Ref # 92144) | 92144-1417 | 1 |
| BOLT,8X40 (Ref # 92150) | 92150-1403 | 2 |