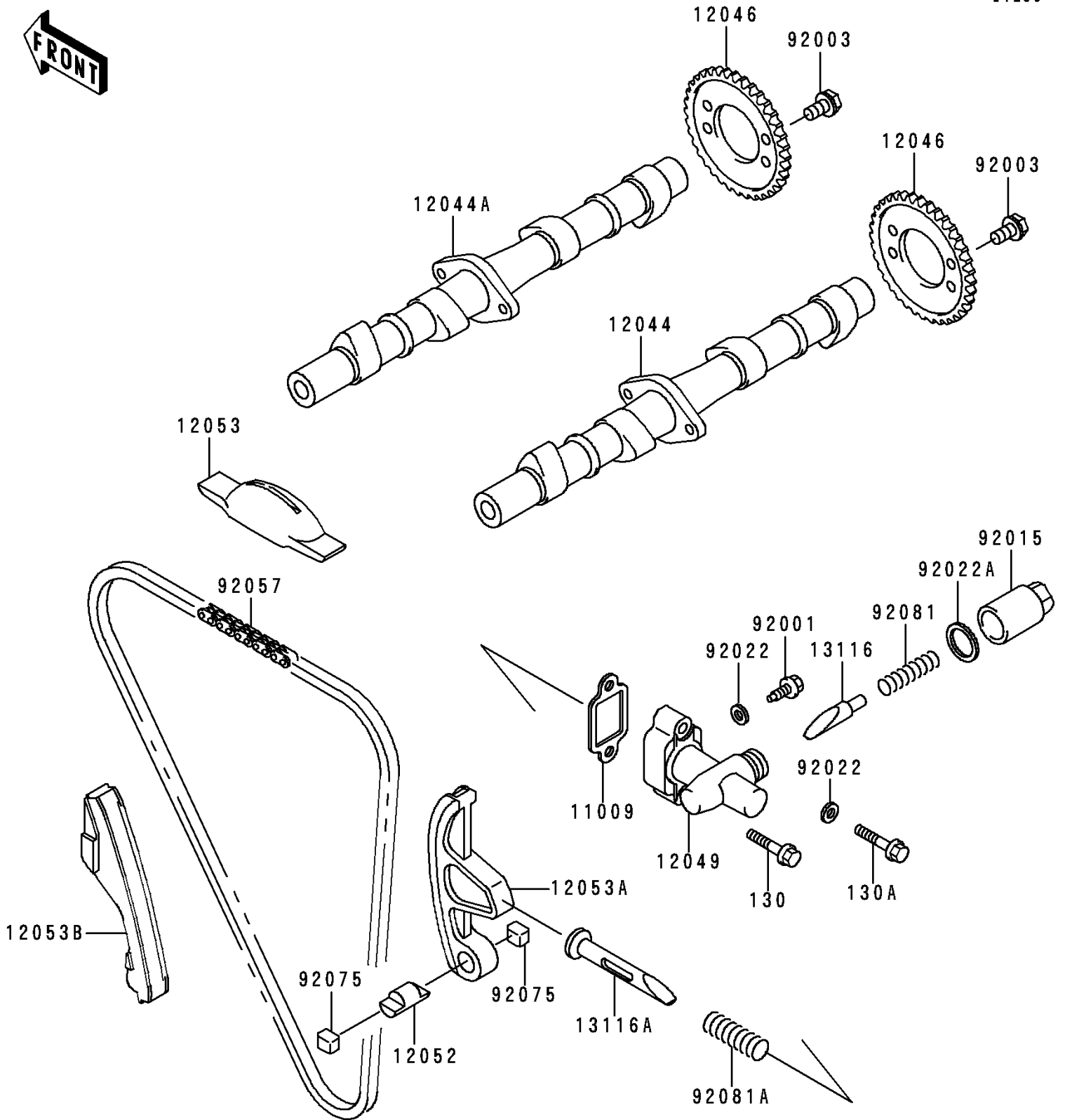


1991 Zephyr 750 PARTS DIAGRAM

Camshaft/Tensioner

E1230



1991 Zephyr 750 PARTS LIST

Camshaft/Tensioner

| ITEM NAME | PART NUMBER | QUANTITY |
|---|-------------|----------|
| BOLT-FLANGED,6X30 (Ref # 130) | 130G0630 | 1 |
| BOLT-FLANGED,6X35 (Ref # 130A) | 130G0635 | 1 |
| GASKET,TENSIONER (Ref # 11009) | 11009-1980 | 1 |
| CAMSHAFT-VALVE,INTAKE (Ref # 12044) | 12044-1043 | 1 |
| CAMSHAFT-VALVE,EXHAUST (Ref # 12044A) | 12044-1044 | 1 |
| SPROCKET,CAMSHAFT,46T (Ref # 12046) | 12046-1021 | 2 |
| TENSIONER,CAM CHAIN (Ref # 12049) | 12049-1015 | 1 |
| SHAFT-IDLER,CAM CHAIN GUIDE (Ref # 12052) | 12052-003 | 1 |
| GUIDE-CHAIN,UPP (Ref # 12053) | 12053-1038 | 1 |
| GUIDE-CHAIN,RR (Ref # 12053A) | 12053-1054 | 1 |
| GUIDE-CHAIN,FR (Ref # 12053B) | 12053-1058 | 1 |
| ROD-PUSH,TENSIONER (Ref # 13116) | 13116-1012 | 1 |
| ROD-PUSH,TENSIONER (Ref # 13116A) | 13116-1036 | 1 |
| BOLT,TENSIONER ADJUST (Ref # 92001) | 92001-1155 | 1 |
| BOLT,FLANGED,6X11 (Ref # 92003) | 92003-208 | 4 |
| NUT,CAP,18MM (Ref # 92015) | 92015-1100 | 1 |
| WASHER,6.1X12X1 (Ref # 92022) | 92022-077 | 2 |
| WASHER,18.3X24X1.4 (Ref # 92022A) | 92022-1175 | 1 |
| CHAIN,CAM,82RH2015-150L (Ref # 92057) | 92057-1319 | 1 |
| DAMPER,CAM CHAIN GUIDE (Ref # 92075) | 92075-1314 | 2 |
| SPRING,TENSIONER (Ref # 92081) | 92081-1302 | 1 |
| SPRING,TENSIONER (Ref # 92081A) | 92081-1374 | 1 |