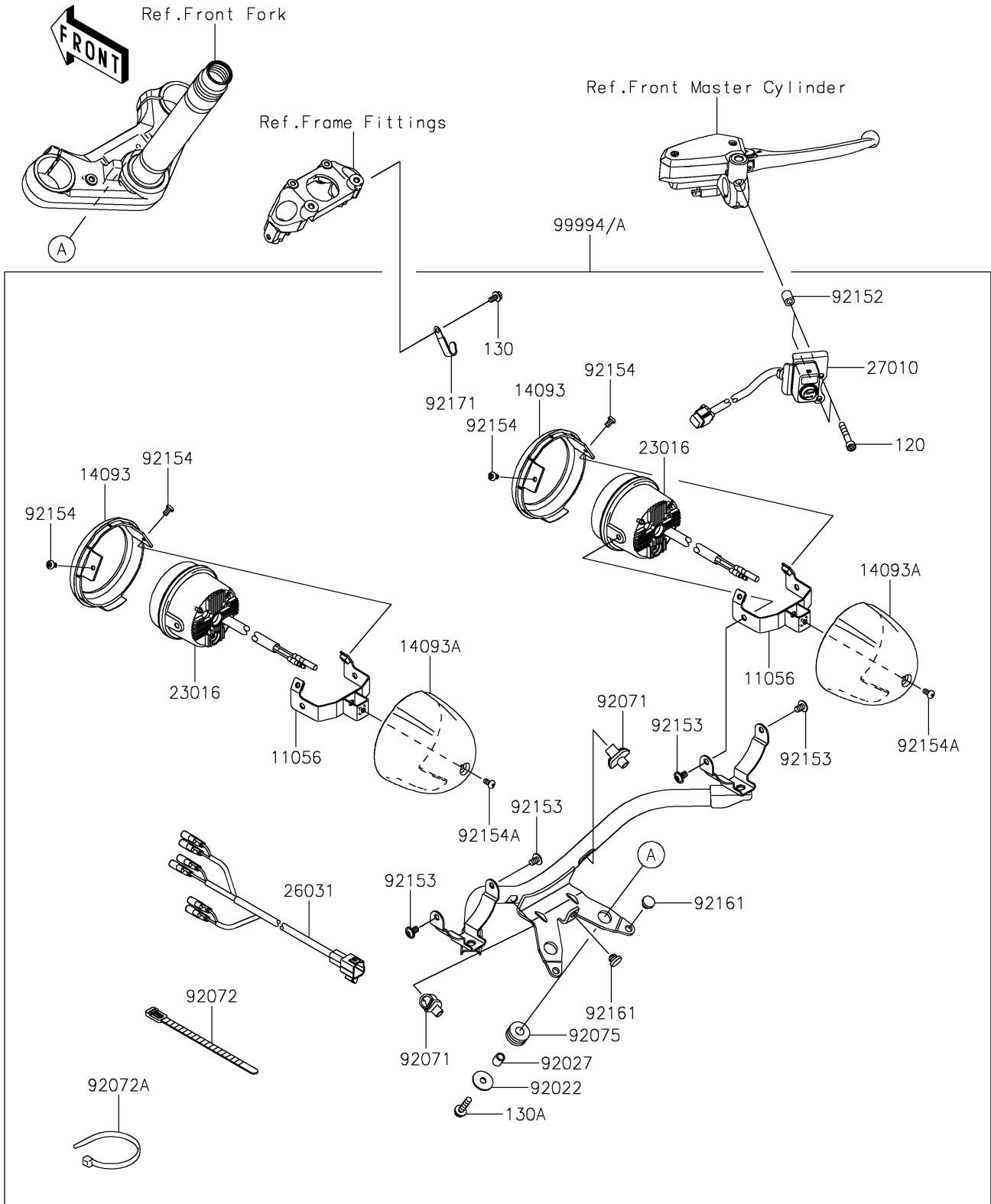


2023 Vulcan® S CAFÉ PARTS DIAGRAM

Accessory(Sub Lamp)

F2910D



2023 Vulcan® S CAFÉ PARTS LIST

Accessory(Sub Lamp)

ITEM NAME	PART NUMBER	QUANTITY
BRACKET,LAMP COVER (Ref # 11056)	11056-4446	2
COVER,RIM (Ref # 14093)	14093-0162	2
COVER,BODY (Ref # 14093A)	14093-0163	2
LAMP-ASSY,PIAA,LP-530 (Ref # 23016)	23016-0576	2
HARNESS (Ref # 26031)	26031-1823	1
SWITCH,SUB LAMP (Ref # 27010)	27010-0761	1
WASHER,7X24X1.6 (Ref # 92022)	92022-1160	2
COLLAR,6.8X10X12 (Ref # 92027)	92027-162	2
GROMMET,SIGNAL LAMP (Ref # 92071)	92071-0043	2
BAND,L=140 (Ref # 92072)	92072-1293	2
BAND,L=152 (Ref # 92072A)	92072-3874	1
DAMPER,10X24X12 (Ref # 92075)	92075-1690	2
COLLAR,6.3X11X14 (Ref # 92152)	92152-1965	2
BOLT,SOCKET,6X10 (Ref # 92153)	92153-1527	4
BOLT (Ref # 92154)	92154-0314	4
BOLT,SOCKET,5X10 (Ref # 92154A)	92154-1292	2
DAMPER (Ref # 92161)	92161-1084	3
CLAMP (Ref # 92171)	92171-1539	1
KIT-ACCESSORY,SUB-LAMP,BLK (Ref # 99994)	99994-0511	1
KIT-ACCESSORY,SUB-LAMP,PLT (Ref # 99994A)	99994-0555	1
BOLT-SOCKET,6X40 (Ref # 120)	120CB0640	2
BOLT-FLANGED,5X10 (Ref # 130)	130AA0510	1
BOLT-FLANGED,6X25 (Ref # 130A)	130BB0625	2