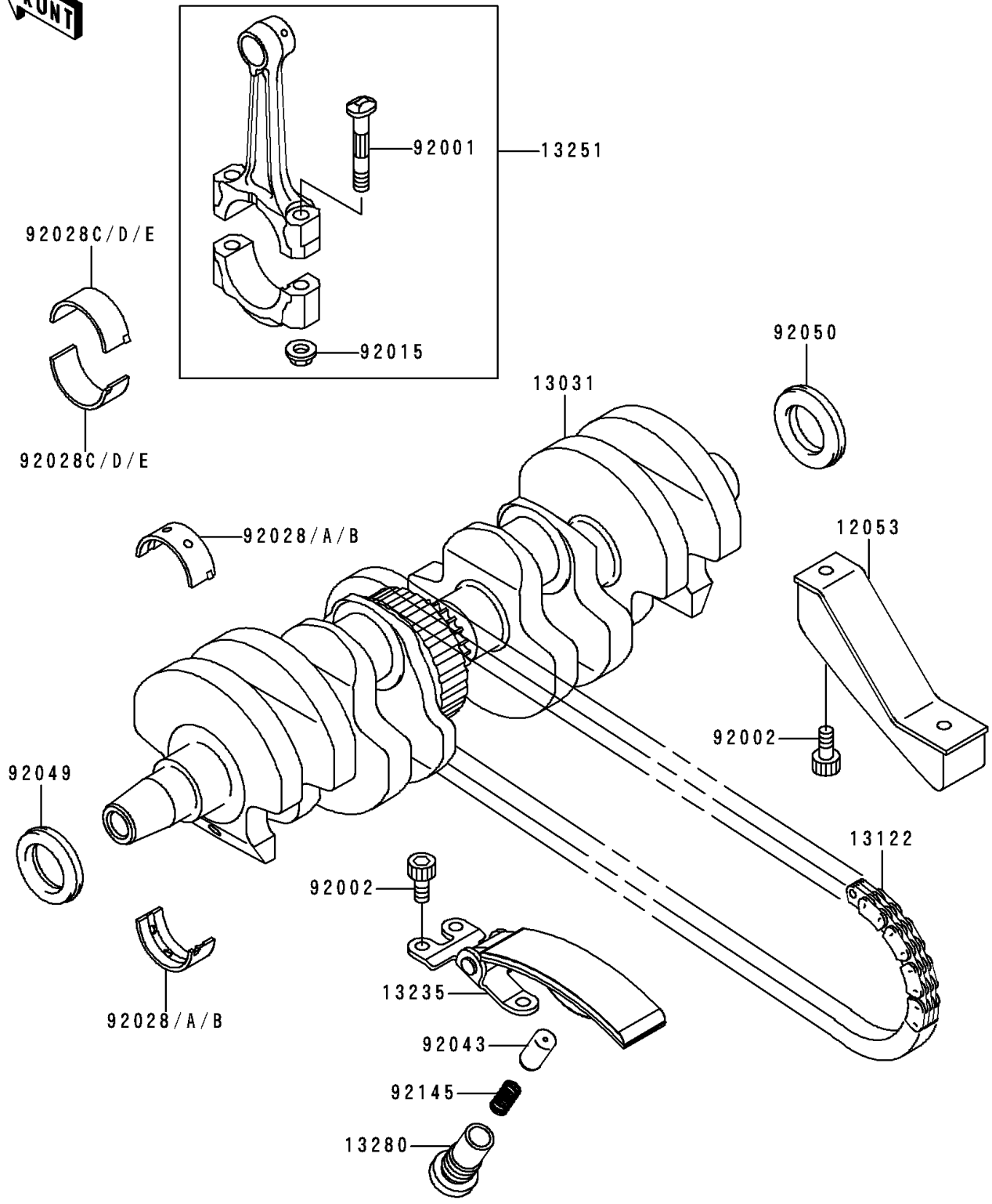


# 2000 ZR-7 PARTS DIAGRAM

Crankshaft

E1321



## 2000 ZR-7 PARTS LIST

### Crankshaft

ITEM NAME	PART NUMBER	QUANTITY
GUIDE-CHAIN,CRANKCASE,UPP (Ref # 12053)	12053-1428	1
CRANKSHAFT-COMP (Ref # 13031)	13031-1458	1
CHAIN,63-139X52L(TUBAKIMOTO) (Ref # 13122)	13122-007	1
GUIDE-COMP,CRANKCASE,LWR (Ref # 13235)	13235-1079	1
ROD-ASSY-CONNECTING,K (Ref # 13251)	13251-1065-KK	4
HOLDER (Ref # 13280)	13280-1145	1
BOLT,CONNECTING ROD,8MM (Ref # 92001)	92001-1887	8
BOLT,SOCKET,6X14 (Ref # 92002)	92002-1592	5
NUT,FLANGED,8MM (Ref # 92015)	92015-1311	8
BUSHING,CRANKSHAFT,BLUE (Ref # 92028)	92028-1917	10
BUSHING,CRANKSHAFT,BLACK (Ref # 92028A)	92028-1918	AR
BUSHING,CRANKSHAFT,BROWN (Ref # 92028B)	92028-1919	AR
BUSHING,CONNECTING ROD,BLUE (Ref # 92028C)	92028-1920	8
BUSHING,CONNECTING ROD,BLACK (Ref # 92028D)	92028-1921	AR
BUSHING,CONNECTING ROD,BROWN (Ref # 92028E)	92028-1922	AR
PIN (Ref # 92043)	92043-076	1
SEAL-OIL,HSCY25X39X7 (Ref # 92049)	92049-1090	1
SEAL-OIL,HSCY25397 (Ref # 92050)	92050-081	1
SPRING (Ref # 92145)	92145-1270	1