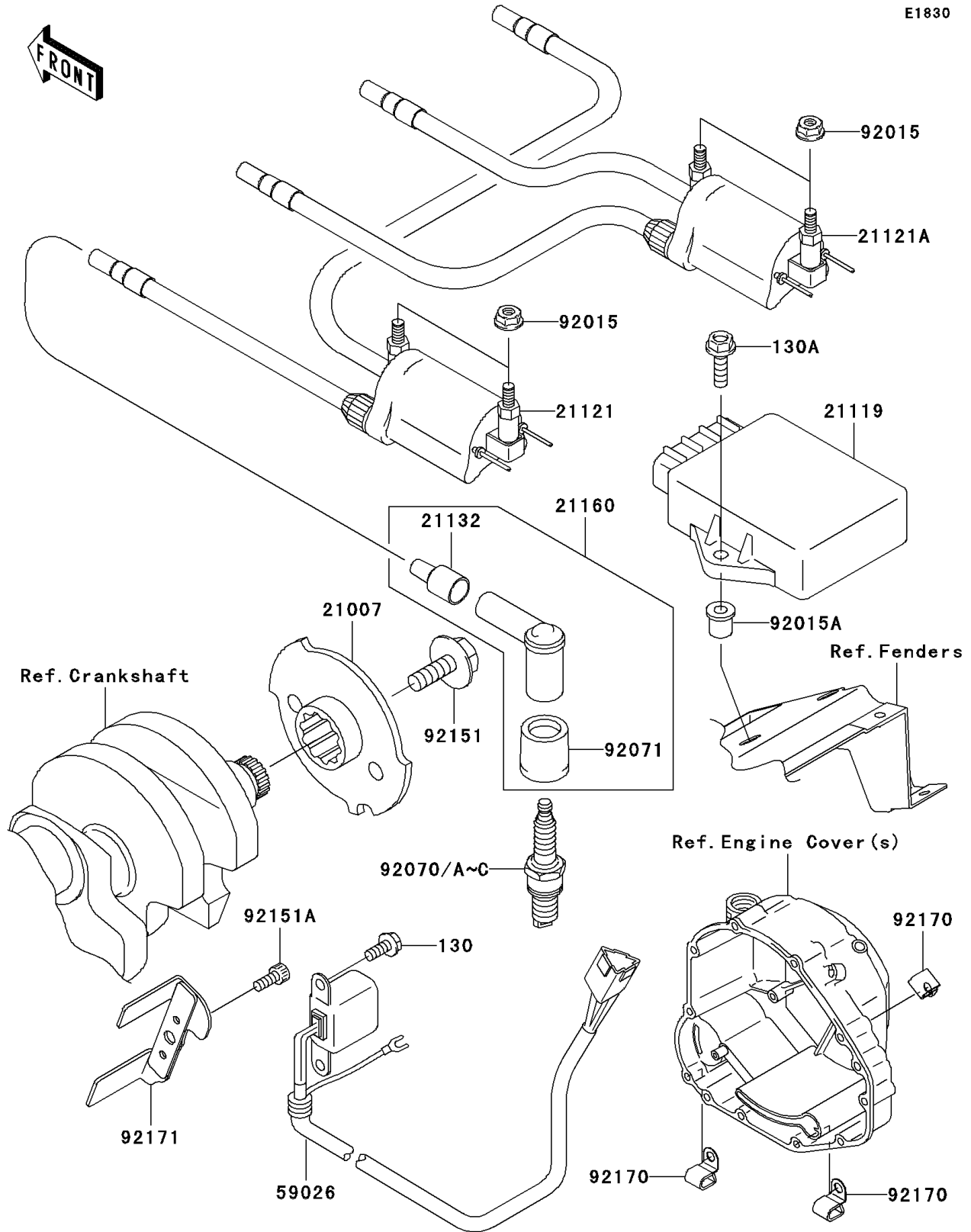


2003 ZR-7S PARTS DIAGRAM

Ignition System

E1830



2003 ZR-7S PARTS LIST

Ignition System

| ITEM NAME | PART NUMBER | QUANTITY |
|--|-------------|----------|
| BOLT-FLANGED (Ref # 130) | 130G0512 | 2 |
| BOLT-FLANGED (Ref # 130A) | 130J0620 | 2 |
| ROTOR (Ref # 21007) | 21007-1353 | 1 |
| IGNITER (Ref # 21119) | 21119-1541 | 1 |
| COIL-IGNITION,#1 (Ref # 21121) | 21121-1177 | 1 |
| COIL-IGNITION,#2 (Ref # 21121A) | 21121-1178 | 1 |
| GROMMET,HIGH TENSION (Ref # 21132) | 21132-005 | 4 |
| CAP-ASSY-PLUG (Ref # 21160) | 21160-1085 | 4 |
| COIL-PULSING (Ref # 59026) | 59026-1152 | 1 |
| NUT,FLANGED,6MM (Ref # 92015) | 92015-1193 | 4 |
| NUT (Ref # 92015A) | 92015-1700 | 2 |
| PLUG-SPARK,X24ESR-U(ND) (Ref # 92070) | | AR |
| PLUG-SPARK,X27ESR-U(ND) (Ref # 92070A) | | 4 |
| PLUG-SPARK,DR9EA(NGK) (Ref # 92070B) | 92070-1189 | 4 |
| PLUG-SPARK,DR8EA(NGK) (Ref # 92070C) | 92070-1199 | AR |
| GROMMET,PLUG CAP (Ref # 92071) | 92071-1184 | 4 |
| BOLT,8X23 (Ref # 92151) | 92151-1308 | 1 |
| BOLT,SOCKET,5X12 (Ref # 92151A) | 92151-1365 | 1 |
| CLAMP (Ref # 92170) | 92170-1577 | 3 |
| CLAMP (Ref # 92171) | 92171-1150 | 1 |