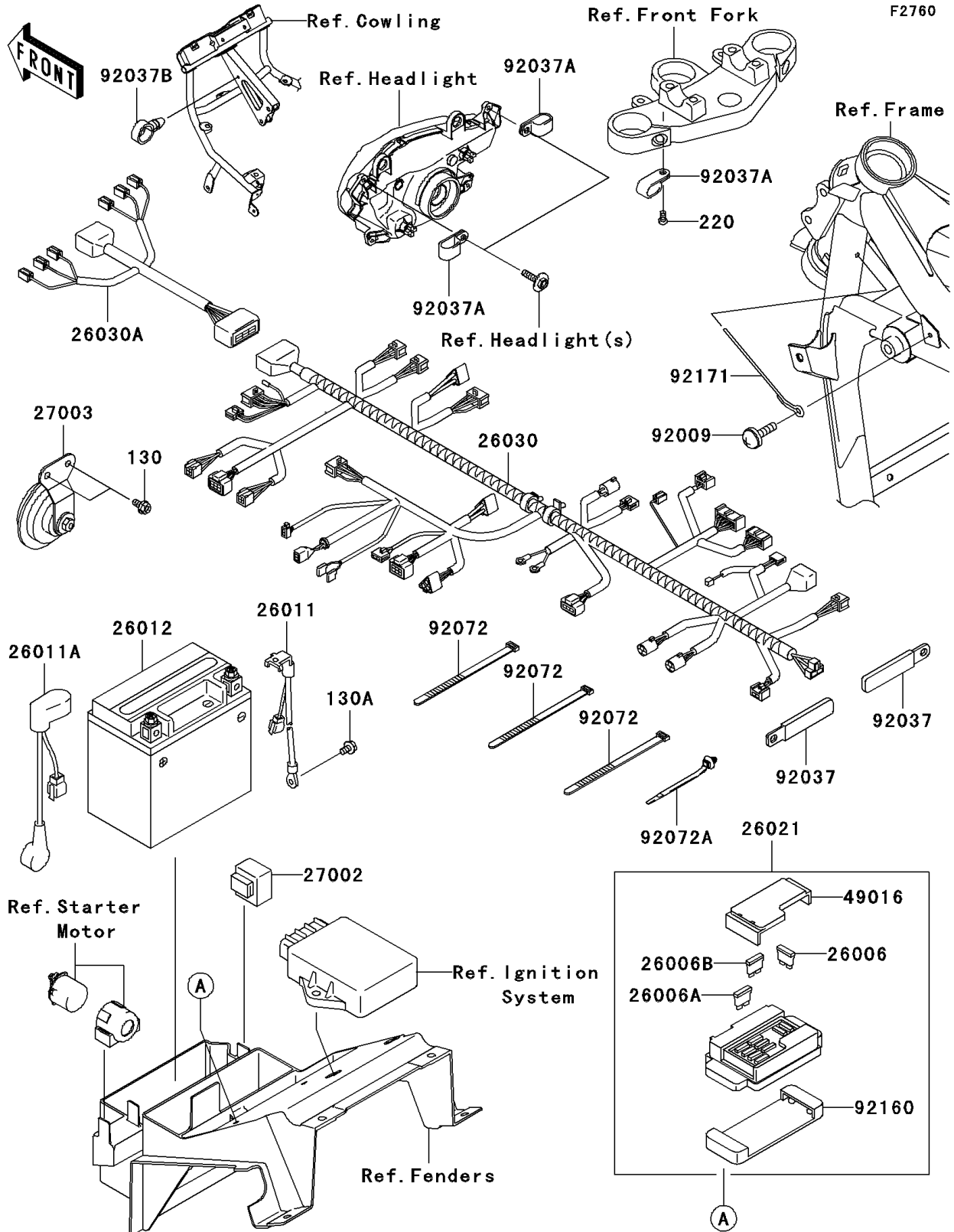


2003 ZR-7S PARTS DIAGRAM

Chassis Electrical Equipment



2003 ZR-7S PARTS LIST

Chassis Electrical Equipment

ITEM NAME	PART NUMBER	QUANTITY
BOLT-FLANGED (Ref # 130)	130J0612	2
BOLT-FLANGED,6X10 (Ref # 130A)	130V0610	1
SCREW-PAN-CROS (Ref # 220)	220C0510	1
FUSE,30A-G (Ref # 26006)	26006-1067	2
FUSE,10A-R (Ref # 26006A)	26006-1068	6
FUSE,15A-B (Ref # 26006B)	26006-1069	1
WIRE-LEAD,BATTERY(-) (Ref # 26011)	26011-1799	1
WIRE-LEAD,BATTERY(+) (Ref # 26011A)	26011-1803	1
BATTERY,YTX12-BS,12V 10AH (Ref # 26012)	26012-1330	1
JUNCTION BOX (Ref # 26021)	26021-1104	1
HARNESS,MAIN (Ref # 26030)	26030-1847	1
HARNESS,FR (Ref # 26030A)	26030-1848	1
RELAY-ASSY,TURN SIGNAL (Ref # 27002)	27002-1101	1
HORN (Ref # 27003)	27003-1392	1
COVER-SEAL,FUSE (Ref # 49016)	49016-1180	1
SCREW,6X14 (Ref # 92009)	92009-1662	1
CLAMP,L=60 (Ref # 92037)	92037-1069	2
CLAMP (Ref # 92037A)	92037-1608	3
CLAMP,HOSE (Ref # 92037B)	92037-1827	1
BAND,L=202 (Ref # 92072)	92072-1195	3
BAND (Ref # 92072A)	92072-1414	4
DAMPER,JUNCTION BOX (Ref # 92160)	92160-1650	1
CLAMP (Ref # 92171)	92171-1315	1