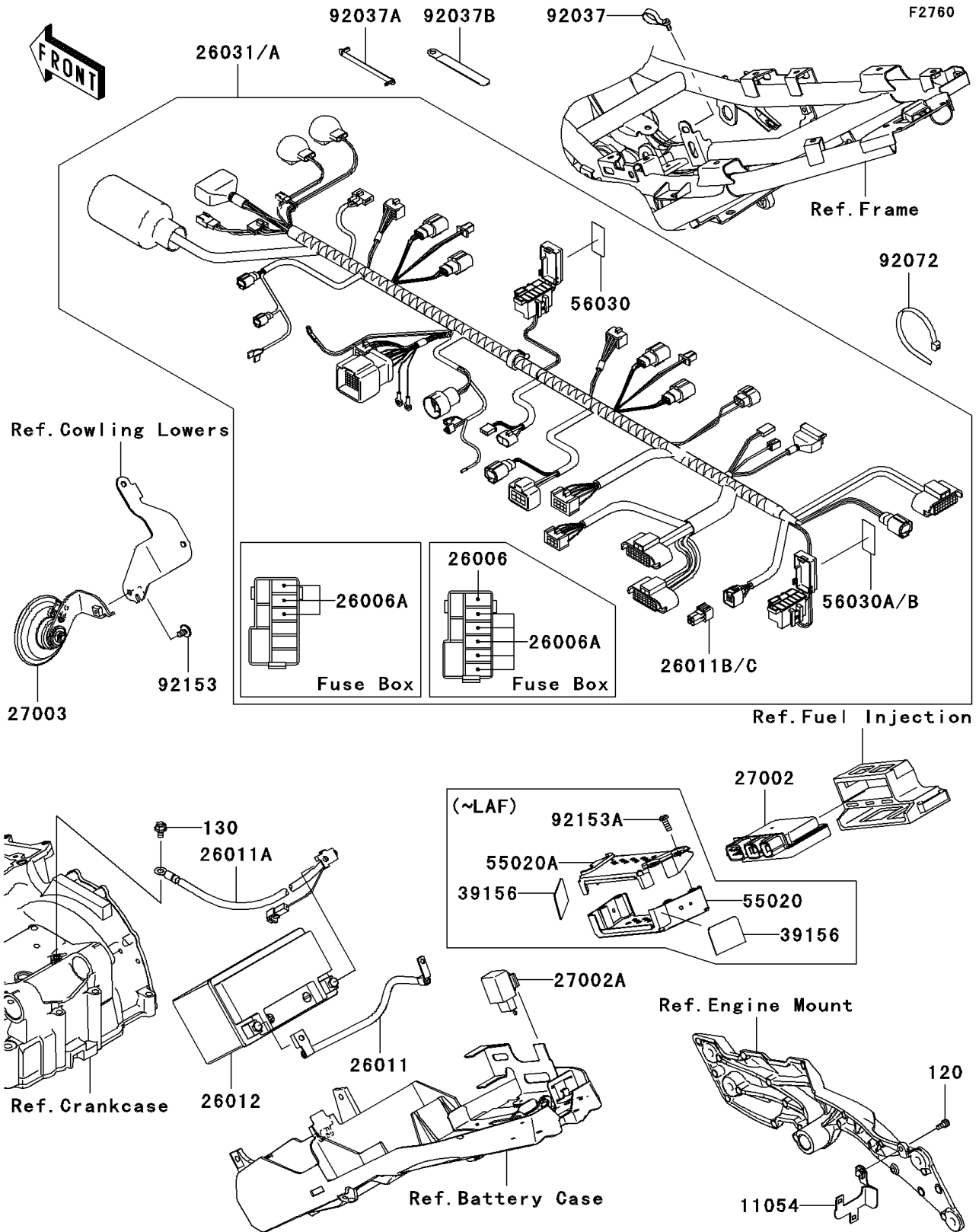


# 2007 Z750 (European) PARTS DIAGRAM

Chassis Electrical Equipment



## 2007 Z750 (European) PARTS LIST

### Chassis Electrical Equipment

ITEM NAME	PART NUMBER	QUANTITY
BOLT-SOCKET,5X10 (Ref # 120)	120CB0510	1
BOLT-FLANGED,6X10 (Ref # 130)	130BA0610	1
BRACKET,COUPLER (Ref # 11054)	11054-1992	1
FUSE,15A (Ref # 26006)	26006-0001	1
FUSE,10A (Ref # 26006A)	26006-1078	8
WIRE-LEAD,BATTERY(+) (Ref # 26011)	26011-0107	1
WIRE-LEAD,BATTERY(-) (Ref # 26011A)	26011-0108	1
WIRE-LEAD (Ref # 26011B)	26011-0159	1
BATTERY,YTX9-BS,12V 8AH (Ref # 26012)	26012-0088	1
HARNESS,MAIN (Ref # 26031)	26031-0765	1
RELAY-ASSY (Ref # 27002)	27002-0007	1
RELAY-ASSY,SIGNAL LAMP (Ref # 27002A)	27002-1097	1
HORN (Ref # 27003)	27003-0053	1
PAD,ECU GUARD (Ref # 39156)	39156-0291	2
GUARD,ECU,LWR (Ref # 55020)	55020-0388	1
GUARD,ECU,UPP (Ref # 55020A)	55020-0389	1
LABEL,FUSE BOX (Ref # 56030)	56030-0143	1
LABEL,FUSE BOX (Ref # 56030A)	56030-0144	1
CLAMP,SPEED,L=58 (Ref # 92037)	92037-1163	1
CLAMP,SPEED,L=80.5 (Ref # 92037A)	92037-1903	2
CLAMP (Ref # 92037B)	92037-1993	2
BAND,L=202 (Ref # 92072)	92072-1195	2
BOLT,SOCKET,6X10 (Ref # 92153)	92153-0410	1
BOLT,6X12 (Ref # 92153A)	92153-0906	4