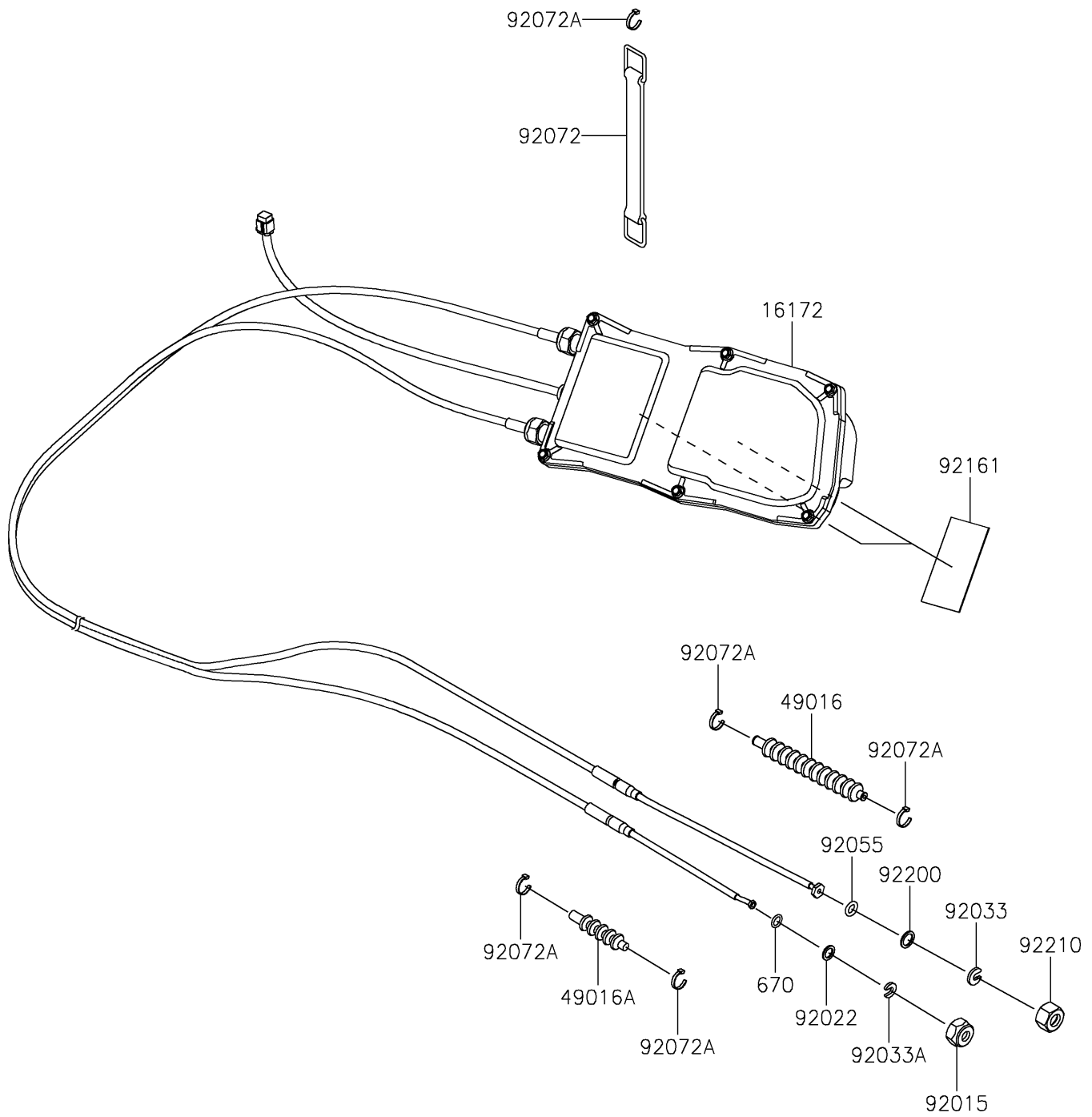


2023 JET SKI® ULTRA® 160LX-S PARTS DIAGRAM

Control

F3177



2023 JET SKI® ULTRA® 160LX-S PARTS LIST

Control

| ITEM NAME | PART NUMBER | QUANTITY |
|---------------------------------------|-------------|----------|
| ACTUATOR,JET PUMP (Ref # 16172) | 16172-0570 | 1 |
| COVER-SEAL (Ref # 49016) | 49016-0695 | 1 |
| COVER-SEAL,TILT CABLE (Ref # 49016A) | 49016-3702 | 1 |
| NUT,20MM (Ref # 92015) | 92015-526 | 1 |
| WASHER (Ref # 92022) | 92022-535 | 1 |
| RING-SNAP (Ref # 92033) | 92033-3735 | 1 |
| RING-SNAP,7.7X17.5X3.0 (Ref # 92033A) | 92033-3737 | 1 |
| RING-O (Ref # 92055) | 92055-3778 | 1 |
| BAND,BATTERY (Ref # 92072) | 92072-3879 | 1 |
| BAND,L=100.08 (Ref # 92072A) | 92072-3882 | 5 |
| DAMPER (Ref # 92161) | 92161-3728 | 2 |
| WASHER,14.5X20X1.5 (Ref # 92200) | 92200-3793 | 1 |
| NUT,22MM (Ref # 92210) | 92210-3772 | 1 |
| O RING,11MM (Ref # 670) | 670B2011 | 1 |