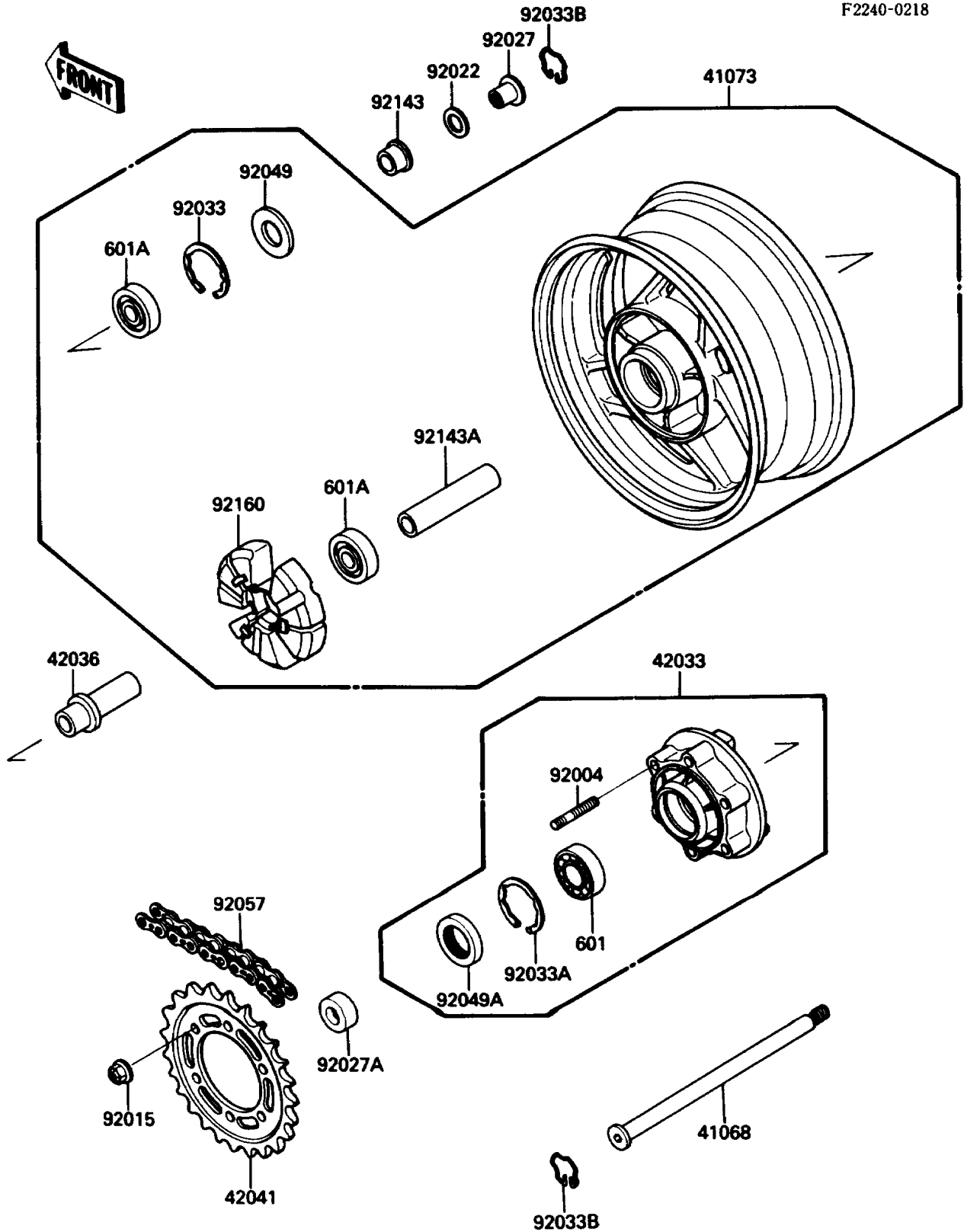


1988 NINJA® ZX-10 PARTS DIAGRAM

Rear Wheel/Chain

F2240-0218



1988 NINJA® ZX-10 PARTS LIST

Rear Wheel/Chain

| ITEM NAME | PART NUMBER | QUANTITY |
|---|---------------|----------|
| BEARING-BALL,#6206UUC3 (Ref # 601) | 601B6206UU | 1 |
| BEARING-BALL,#6304UUC3 (Ref # 601A) | 601B6304UU | 2 |
| AXLE,RR (Ref # 41068) | 41068-1256 | 1 |
| WHEEL-ASSY,RR,SILVER NO.1 (Ref # 41073) | 41073-1392-CX | 1 |
| COUPLING-ASSY,RR HUB,M.SILVER (Ref # 42033) | 42033-1133-7J | 1 |
| SLEEVE,RR AXLE,L=62 (Ref # 42036) | 42036-1229 | 1 |
| SPROCKET-HUB,45T (Ref # 42041) | 42041-1306 | 1 |
| STUD,10X24 (Ref # 92004) | 92004-1146 | 6 |
| NUT,10MM (Ref # 92015) | 92015-1720 | 6 |
| WASHER,23X32X2.3 (Ref # 92022) | 92022-1618 | 1 |
| COLLAR,RR AXLE,L=28 (Ref # 92027) | 92027-1810 | 1 |
| COLLAR,RR AXLE,L=20.5 (Ref # 92027A) | 92027-1884 | 1 |
| RING-SNAP,52MM (Ref # 92033) | 92033-1043 | 1 |
| RING-SNAP,62MM (Ref # 92033A) | 92033-1044 | 1 |
| RING-SNAP,RR AXLE (Ref # 92033B) | 92033-1156 | 2 |
| SEAL-OIL,28X52X5 (Ref # 92049) | 92049-1061 | 1 |
| SEAL-OIL,AJN40627 (Ref # 92049A) | 92050-027 | 1 |
| CHAIN,DRIVE,EK532ZV-OX110L (Ref # 92057) | 92057-1259 | 1 |
| COLLAR,L=23 (Ref # 92143) | 92143-1042 | 1 |
| COLLAR,20.2X29X89 (Ref # 92143A) | 92143-1199 | 1 |
| DAMPER,SHOCK,RR HUB (Ref # 92160) | 92160-1051 | 1 |