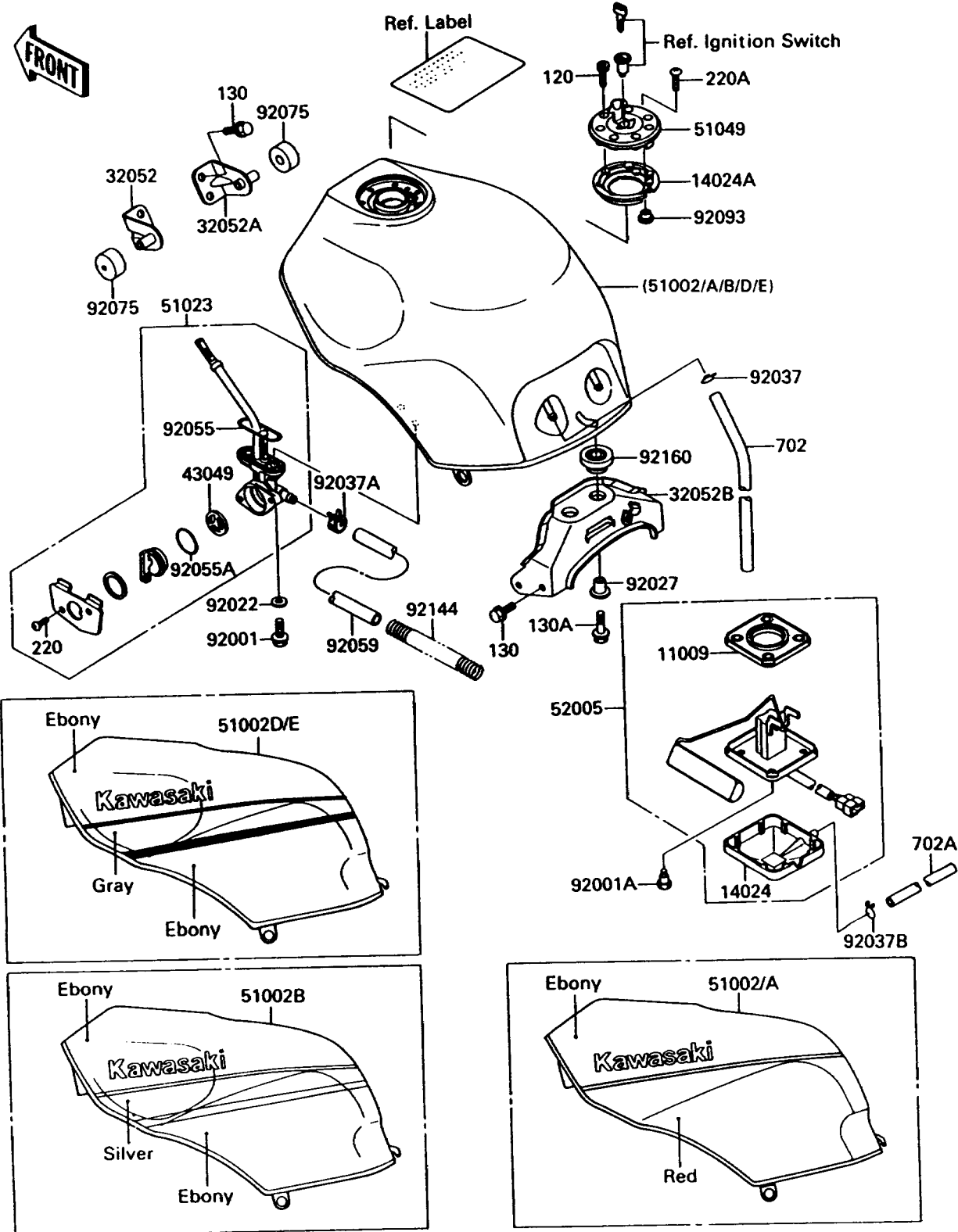


1988 NINJA® ZX-10 PARTS DIAGRAM

Fuel Tank

F2410-0382



1988 NINJA® ZX-10 PARTS LIST

Fuel Tank

ITEM NAME	PART NUMBER	QUANTITY
GASKET,FUEL GAUGE (Ref # 11009)	11009-1656	1
COVER,FUEL GAUGE (Ref # 14024)	14025-1536	1
COVER,TANK CAP (Ref # 14024A)	14025-1913	1
BRACKET-TANK,FR,LH (Ref # 32052)	32052-1268	1
BRACKET-TANK,FR,RH (Ref # 32052A)	32052-1269	1
BRACKET-TANK,RR (Ref # 32052B)	32052-1270	1
PACKING,TAP VALVE (Ref # 43049)	43049-1066	1
TAP-ASSY,FUEL (Ref # 51023)	51023-1151	1
CAP-TANK,FUEL (Ref # 51049)	51049-1079	1
GAUGE,FUEL (Ref # 52005)	52005-1090	1
BOLT,6X20 (Ref # 92001)	92001-1091	2
BOLT,FUEL GAUGE (Ref # 92001A)	92001-1705	4
WASHER,6.2X11X1.5 (Ref # 92022)	92022-183	2
COLLAR,L=16.1 (Ref # 92027)	92027-1847	2
CLAMP,TUBE (Ref # 92037)	92037-010	1
CLAMP (Ref # 92037A)	92037-1181	1
CLAMP,TUBE (Ref # 92037B)	92037-147	1
RING-O,FUEL TAP PACKING (Ref # 92055)	92055-1112	1
BOLT-SOCKET (Ref # 120)	120S0512	7
BOLT-FLANGED,6X14,BLACK (Ref # 130)	130J0614	8
BOLT-FLANGED,6X25 (Ref # 130A)	130J0625	2
SCREW-PAN-CROS (Ref # 220)	220C0308	2
SCREW-PAN-CROS (Ref # 220A)	220C0508	1
TUBE-RUBBER,7X10X400 (Ref # 702)	702A07400	1
TUBE-RUBBER,7X10X640 (Ref # 702A)	702A07640	1
RING-O,TAP LEVER (Ref # 92055A)	92055-1419	1
TUBE,8X13X210 (Ref # 92059)	92059-1932	1
DAMPER,FUEL TANK (Ref # 92075)	92075-125	2
SPRING,HOSE PROTECTOR (Ref # 92144)	92144-1347	1

1988 NINJA® ZX-10 PARTS LIST

Fuel Tank

ITEM NAME	PART NUMBER	QUANTITY
DAMPER (Ref # 92160)	92160-1046	2
TANK-COMP-FUEL,EBONY/RED (Ref # 51002)	51002-5433-J3	1
TANK-COMP-FUEL,EBONY/RED (Ref # 51002A)	51002-5434-J3	1
TANK-COMP-FUEL,EBONY/SILVER (Ref # 51002B)	51002-5437-DE	1
SEAL,FUEL TANK CAP (Ref # 92093)	92093-1030	1