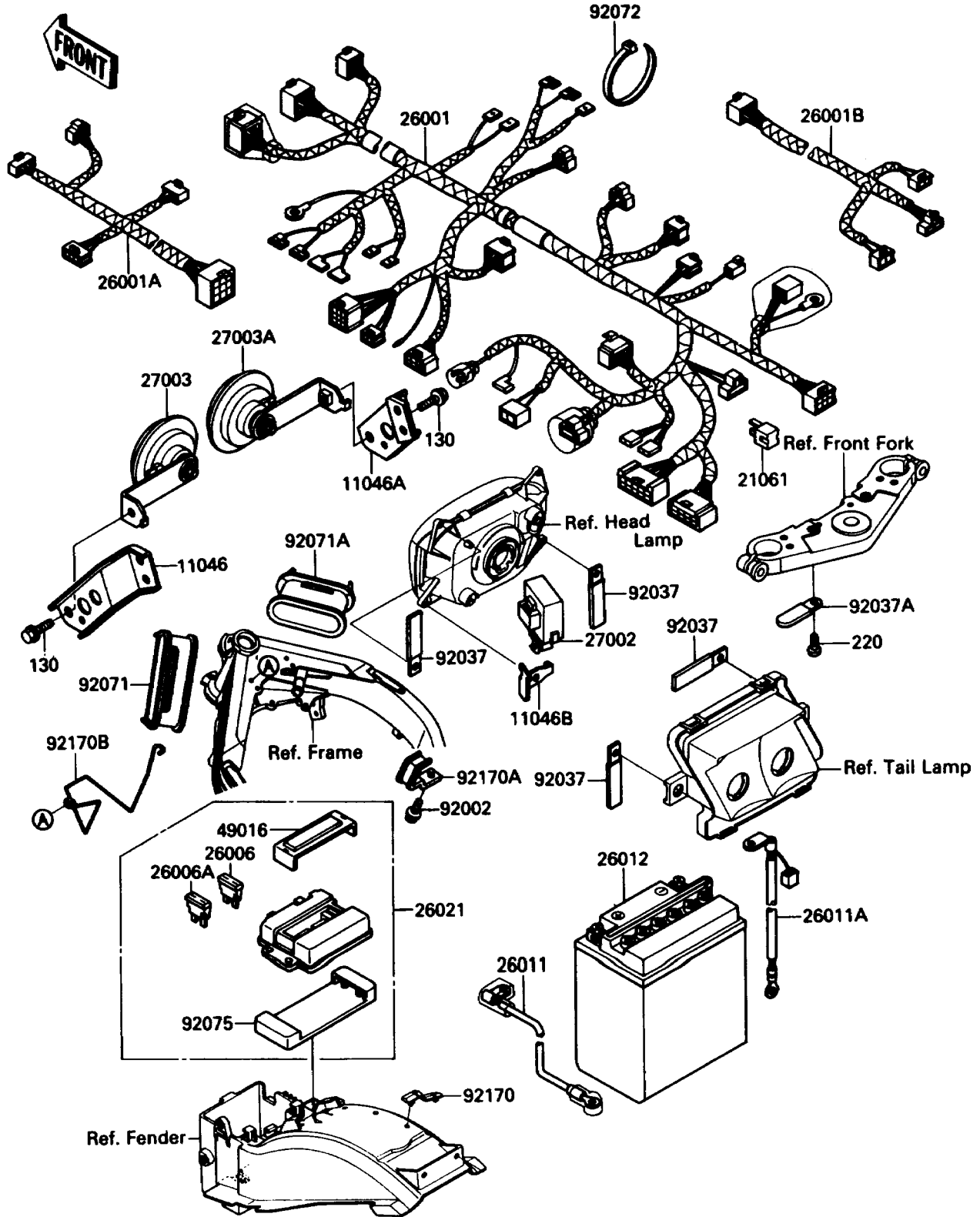


1988 NINJA® ZX-10 PARTS DIAGRAM

Chassis Electrical Equipment

F2760-0406



1988 NINJA® ZX-10 PARTS LIST

Chassis Electrical Equipment

ITEM NAME	PART NUMBER	QUANTITY
BOLT-FLANGED (Ref # 130)	130J0812	2
SCREW-PAN-CROS (Ref # 220)	220C0510	1
BRACKET,HORN,LH (Ref # 11046)	11046-1255	1
BRACKET,HORN,RH (Ref # 11046A)	11046-1256	1
BRACKET,RELAY (Ref # 11046B)	11046-1373	1
RECTIFIER (Ref # 21061)	21061-1003	1
HARNESS,MAIN (Ref # 26001)	26001-1896	1
HARNESS,FR (Ref # 26001A)	26001-1897	1
HARNESS,RR (Ref # 26001B)	26001-1920	1
FUSE,30A-G (Ref # 26006)	26006-1006	1
FUSE,10A-R (Ref # 26006A)	26006-1007	5
WIRE-LEAD,BATTERY(+) (Ref # 26011)	26011-1427	1
WIRE-LEAD,BATTERY(-) (Ref # 26011A)	26011-1428	1
BATTERY,12V 15AH,FB14L-A2(K) (Ref # 26012)	26012-1224	1
JUNCTION BOX (Ref # 26021)	26021-1071	1
RELAY-ASSY,SIGNAL LAMP (Ref # 27002)	27002-1063	1
HORN,LH (Ref # 27003)	27003-1299	1
HORN,RH (Ref # 27003A)	27003-1300	1
COVER-SEAL,FUSE (Ref # 49016)	49016-1125	1
BOLT,6X10 (Ref # 92002)	92002-1628	1
CLAMP,WIRING HARNESS (Ref # 92037)	92037-1069	4
CLAMP,WIRING HARNESS (Ref # 92037A)	92037-1539	1
GROMMET,HARNESS,LH (Ref # 92071)	92071-1169	1
GROMMET,HARNESS,RH (Ref # 92071A)	92071-1170	1
BAND,L=185 (Ref # 92072)	92072-1195	5
DAMPER,JUNCTION BOX (Ref # 92075)	92075-1688	1
CLAMP,HARNESS (Ref # 92170)	92170-1015	3
CLAMP,HARNESS (Ref # 92170A)	92170-1024	1
CLAMP,HARNESS (Ref # 92170B)	92170-1029	1