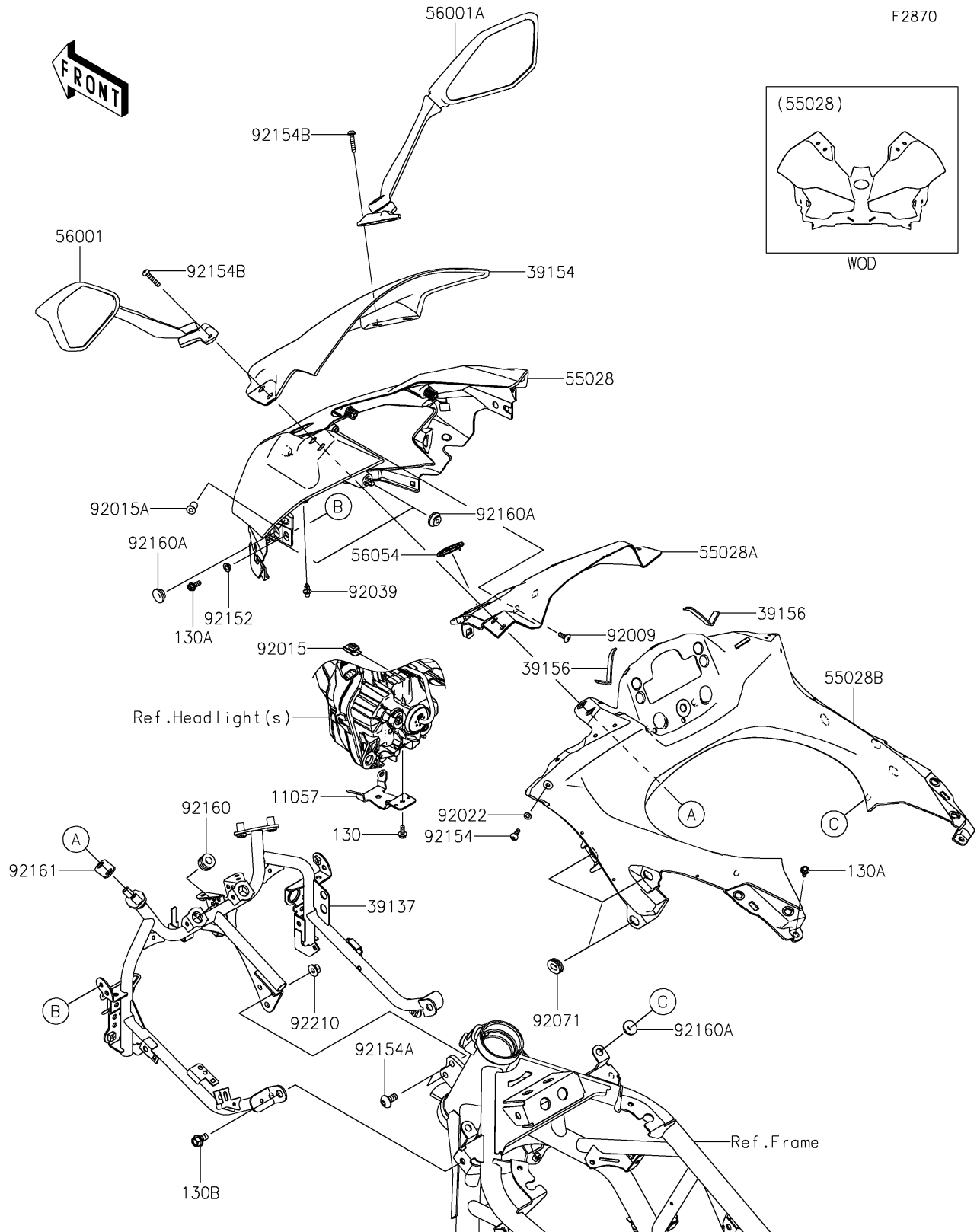


2024 NINJA® 7 HYBRID ABS PARTS DIAGRAM

Cowling(Upper)



2024 NINJA® 7 HYBRID ABS PARTS LIST

Cowling(Upper)

ITEM NAME	PART NUMBER	QUANTITY
BRACKET,HEAD LAMP,LWR (Ref # 11057)	11057-7976	1
STAY-COMP,UPP COWLING (Ref # 39137)	39137-0733	1
WINDSHIELD (Ref # 39154)	39154-0426	1
PAD,70X8X2 (Ref # 39156)	39156-2934	2
COWLING,UPP,EBONY (Ref # 55028)	55028-0832-H8	1
COWLING,UPP,CNT (Ref # 55028A)	55028-0833	1
COWLING,METER PANEL (Ref # 55028B)	55028-0840	1
MIRROR-ASSY,LH (Ref # 56001)	56001-0378	1
MIRROR-ASSY,RH (Ref # 56001A)	56001-0379	1
MARK,UPP COWL.,RIVER (Ref # 56054)	56054-3842	1
SCREW,TAPPING,5X14 (Ref # 92009)	92009-1197	1
NUT,5MM (Ref # 92015)	92015-1710	1
NUT,WELL,5MM (Ref # 92015A)	92015-1757	2
WASHER,5.1X10X1.0 (Ref # 92022)	92022-1977	2
RIVET (Ref # 92039)	92039-0709	1
GROMMET,11X23X7 (Ref # 92071)	92071-0762	6
COLLAR,6X8X4.5 (Ref # 92152)	92152-2395	2
BOLT,SOCKET,5X16 (Ref # 92154)	92154-1701	2
BOLT,SOCKET,8X18 (Ref # 92154A)	92154-2656	2
BOLT,SOCKET,6X25 (Ref # 92154B)	92154-2806	4
DAMPER,10X20X12 (Ref # 92160)	92160-1167	2
DAMPER (Ref # 92160A)	92160-1613	6
DAMPER (Ref # 92161)	92161-1467	2
NUT,FLANGED,8MM (Ref # 92210)	92210-0304	2
BOLT-FLANGED,5X12 (Ref # 130)	130BA0512	1
BOLT-FLANGED,5X14 (Ref # 130A)	130BA0514	4
BOLT-FLANGED,8X14 (Ref # 130B)	130BA0814	2