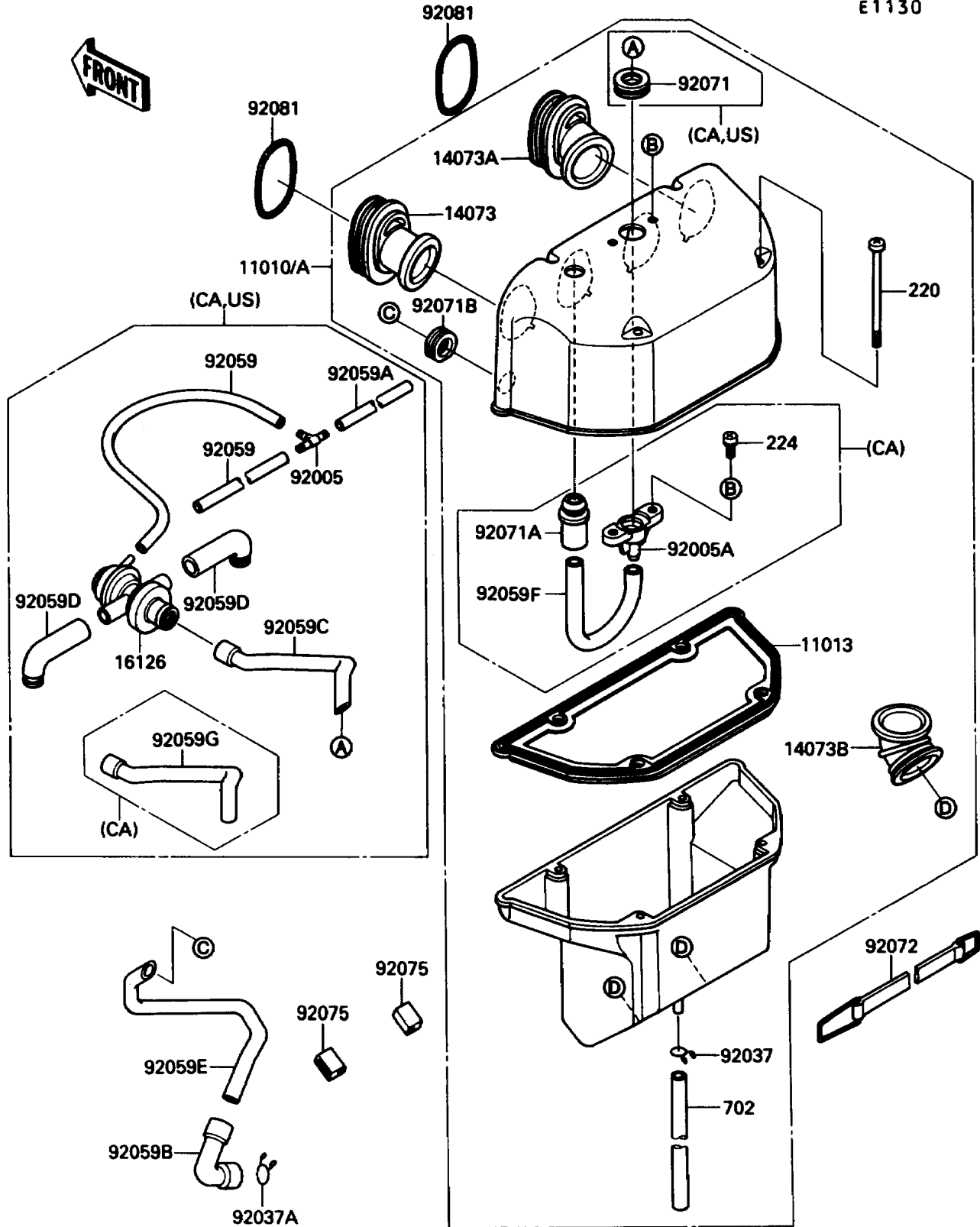


1990 Ninja® ZX™-10 PARTS DIAGRAM

Air Cleaner

E1130



1990 Ninja® ZX™-10 PARTS LIST

Air Cleaner

ITEM NAME	PART NUMBER	QUANTITY
FILTER-ASSY-AIR (Ref # 11010)	11010-1348	1
FILTER-ASSY-AIR (Ref # 11010A)	11010-1349	1
ELEMENT-AIR FILTER (Ref # 11013)	11013-1167	1
DUCT,#1 (Ref # 14073)	14073-1344	2
DUCT,#3 (Ref # 14073A)	14073-1345	2
DUCT (Ref # 14073B)	14073-1349	2
VALVE,AIR SWITCH (Ref # 16126)	16126-1144	1
FITTING,TUBE,T-TYPE (Ref # 92005)	92005-1017	1
FITTING (Ref # 92005A)	92005-1139	1
CLAMP,TUBE (Ref # 92037)	92037-1972	1
CLAMP,TUBE (Ref # 92037A)	92037-213	1
TUBE,4X9X190 (Ref # 92059)	92059-1032	2
TUBE,FUEL,4X9X140 (Ref # 92059A)	92059-1230	1
TUBE (Ref # 92059B)	92059-1551	1
TUBE (Ref # 92059C)	92059-1906	1
TUBE (Ref # 92059D)	92059-1907	2
TUBE (Ref # 92059E)	92059-1909	1
TUBE (Ref # 92059F)	92059-1910	1
TUBE (Ref # 92059G)	92059-1911	1
GROMMET,AIR FILTER (Ref # 92071)	92071-1028	1
GROMMET (Ref # 92071A)	92071-1132	1
GROMMET (Ref # 92071B)	92071-1165	1
BAND,BATTERY,L=306 (Ref # 92072)	92072-512	1
DAMPER (Ref # 92075)	92075-1446	2
SPRING,DUCT (Ref # 92081)	92081-1638	4
SCREW-PAN-CROS (Ref # 220)	220C06120	4
SCREW-PAN-WP-CROS (Ref # 224)	224C0614	2
TUBE-RUBBER (Ref # 702)	702A07480	1