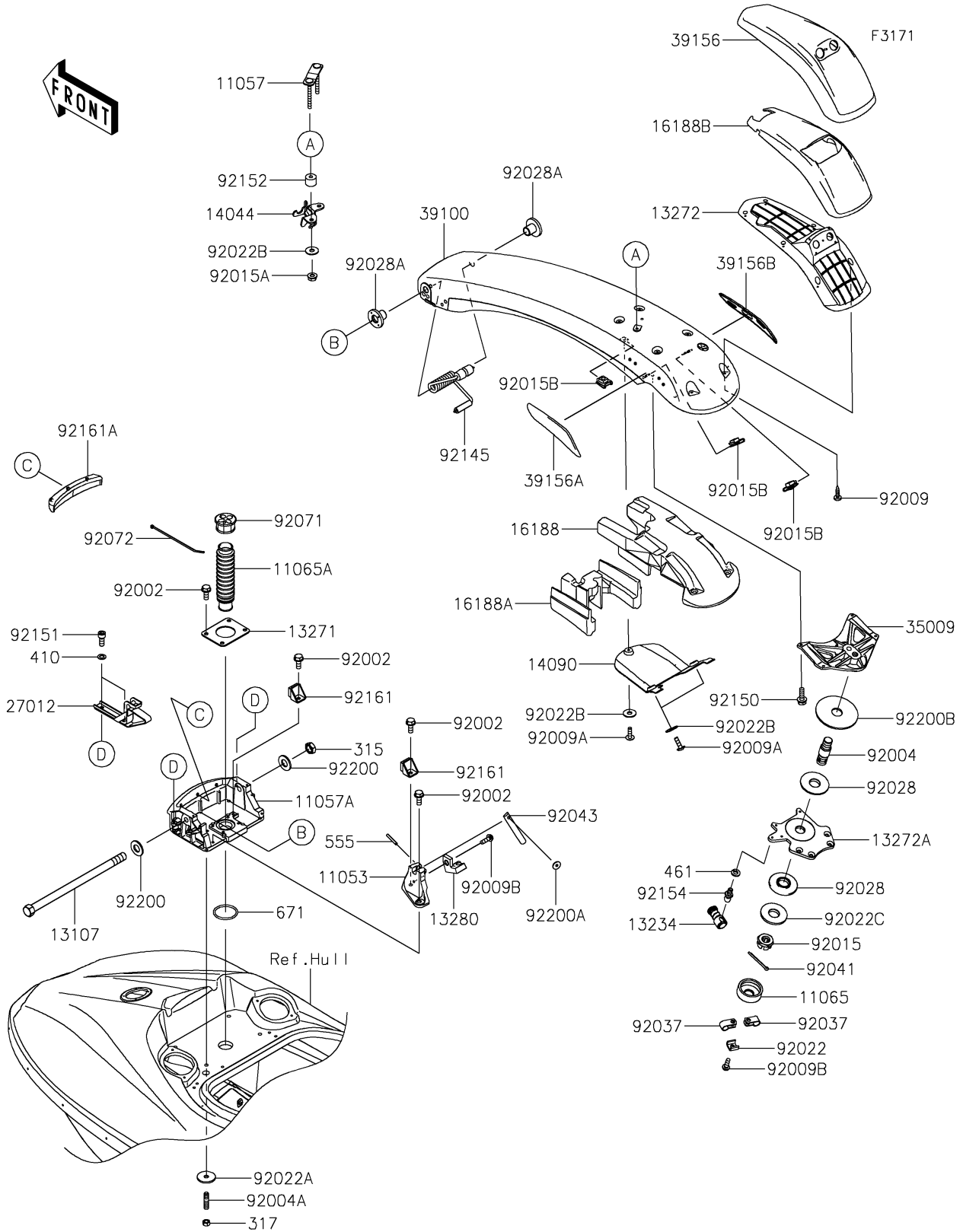


# 2024 JET SKI® SX-R™ 160 PARTS DIAGRAM

## Handle Pole



## 2024 JET SKI® SX-R™ 160 PARTS LIST

### Handle Pole

ITEM NAME	PART NUMBER	QUANTITY
BRACKET (Ref # 11053)	11053-3749	1
BRACKET (Ref # 11057)	11057-0804	1
BRACKET (Ref # 11057A)	11057-1049	1
CAP (Ref # 11065)	11065-0982	1
CAP (Ref # 11065A)	11065-3726	1
SHAFT (Ref # 13107)	13107-3781	1
SHAFT-COMP (Ref # 13234)	13234-3713	1
PLATE (Ref # 13271)	13271-3882	1
PLATE,INDICATOR (Ref # 13272)	13272-2223	1
PLATE (Ref # 13272A)	13272-2268	1
HOLDER (Ref # 13280)	13280-0885	1
HOLDER-CABLE (Ref # 14044)	14044-0568	1
COVER,HANDLE POLE,I.GRAY (Ref # 14090)	14090-3708-72B	1
FLOAT,HANDLE POLE,UPP (Ref # 16188)	16188-0027	1
FLOAT,HANDLE POLE,LWR (Ref # 16188A)	16188-0052	1
FLOAT (Ref # 16188B)	16188-0053	1
HOOK (Ref # 27012)	27012-3859	2
BRACE (Ref # 35009)	35009-3712	1
POLE-COMP-HANDLE,I.GRAY (Ref # 39100)	39100-0001-72B	1
PAD,HANDLE,F.BLACK (Ref # 39156)	39156-2142-6Z	1
PAD,HANDLE POLE,LH (Ref # 39156A)	39156-2172	1
PAD,HANDLE POLE,RH (Ref # 39156B)	39156-2173	1
BOLT,6X16 (Ref # 92002)	92002-3728	7
STUD (Ref # 92004)	92004-0776	1
STUD,8X25 (Ref # 92004A)	92004-3756	4
SCREW,TAPPING,5X20 (Ref # 92009)	92009-3716	6
SCREW,5X16 (Ref # 92009A)	92009-3797	3
SCREW,5X16 (Ref # 92009B)	92009-3868	2
NUT,CASTLE,18MM (Ref # 92015)	92015-3006	1

## 2024 JET SKI® SX-R™ 160 PARTS LIST

### Handle Pole

ITEM NAME	PART NUMBER	QUANTITY
NUT,6MM (Ref # 92015A)	92015-3767	2
NUT,CLIP,5MM (Ref # 92015B)	92015-3830	3
WASHER,CLAMP (Ref # 92022)	92022-3014	1
WASHER,8.5X34X3 (Ref # 92022A)	92022-3746	4
WASHER (Ref # 92022B)	92022-567	5
WASHER (Ref # 92022C)	92022-571	1
BUSHING (Ref # 92028)	92028-3743	2
BUSHING,STEERING (Ref # 92028A)	92028-3752	2
CLAMP,LEAD WIRE (Ref # 92037)	92037-3007	2
COTTER (Ref # 92041)	92041-0011	1
PIN,STOPPER (Ref # 92043)	92043-3754	1
GROMMET (Ref # 92071)	92071-0775	1
BAND,L=188.85 (Ref # 92072)	92072-0105	1
SPRING (Ref # 92145)	92145-3720	1
BOLT,6X20 (Ref # 92150)	92150-3758	4
BOLT,SOCKET,6X16 (Ref # 92151)	92151-3770	4
COLLAR,6.5X20X15 (Ref # 92152)	92152-2338	2
BOLT,BALL,6MM (Ref # 92154)	92154-3710	1
DAMPER (Ref # 92161)	92161-1919	2
DAMPER (Ref # 92161A)	92161-3743	1
WASHER-PLAIN,15X30X2.6 (Ref # 92200)	92200-1847	2
WASHER,3.5X12X1 (Ref # 92200A)	92200-3723	1
WASHER,20.5X80X3 (Ref # 92200B)	92200-3725	1
NUT-HEX-FINE,14MM (Ref # 315)	315R1400	1
NUT-HEX-SMALL,8MM (Ref # 317)	317R0800	4
WASHER-PLAIN-SMALL,6MM (Ref # 410)	410S0600	4
WASHER-SPRING,6MM (Ref # 461)	461S0600	1
PIN-SPRING,3X25 (Ref # 555)	555B0325	1
O RING,40MM (Ref # 671)	671B2540	1