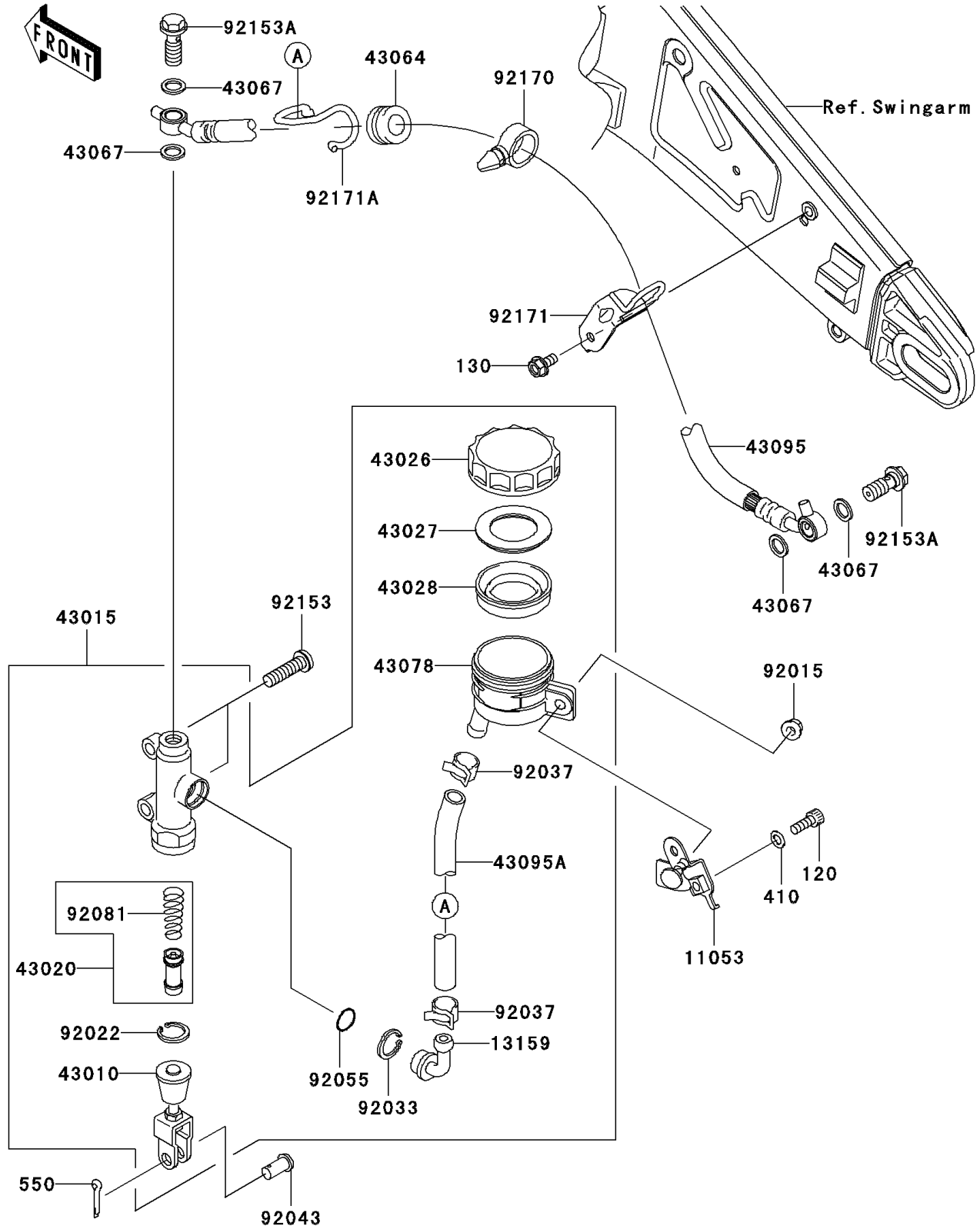


# 2005 Ninja® ZX™-10R PARTS DIAGRAM

Rear Master Cylinder

F2293



## 2005 Ninja® ZX™-10R PARTS LIST

### Rear Master Cylinder

ITEM NAME	PART NUMBER	QUANTITY
BOLT-SOCKET (Ref # 120)	120S0616	1
BOLT-FLANGED (Ref # 130)	130L0612	1
WASHER-PLAIN-SMALL,6MM,BLACK (Ref # 410)	410F0600	1
PIN-COTTER,2.0X15 (Ref # 550)	550D2015	1
BRACKET,RESERVOIR TANK (Ref # 11053)	11053-1307	1
CONNECTOR,RR MASTER CYLINDER (Ref # 13159)	13159-1052	1
ROD-ASSY-BRAKE (Ref # 43010)	43010-1055	1
CYLINDER-ASSY-MASTER,RR (Ref # 43015)	43015-0045	1
PISTON-COMP-BRAKE (Ref # 43020)	43020-1057	1
CAP-BRAKE (Ref # 43026)	43026-1051	1
PLATE-DIAPHRAGM (Ref # 43027)	43027-1051	1
DIAPHRAGM,MASTER CYLINDER (Ref # 43028)	43028-1057	1
GROMMET,HOSE CLAMP (Ref # 43064)	43064-006	1
WASHER,10.5X15X1.5 (Ref # 43067)	43067-001	4
RESERVOIR,RR MASTER CYLINDER (Ref # 43078)	43078-1082	1
HOSE-BRAKE,RR (Ref # 43095)	43095-0063	1
HOSE-BRAKE,RR MASTER CYLINDER (Ref # 43095A)	43095-0167	1
NUT,6MM (Ref # 92015)	92015-1386	1
WASHER,CIRCRIP (Ref # 92022)	92022-1601	1
RING-SNAP,20.5MM (Ref # 92033)	92033-1186	1
CLAMP,BRAKE HOSE (Ref # 92037)	92037-1547	2
PIN,8MM (Ref # 92043)	92043-1303	1
RING-O,MASTER CYLINDER (Ref # 92055)	92055-1251	1
SPRING,MASTER CYLINDER (Ref # 92081)	92081-1737	1
BOLT,SOCKET,8X30 (Ref # 92153)	92153-0393	2
BOLT,OIL,L=23 (Ref # 92153A)	92153-0627	2
CLAMP (Ref # 92170)	92170-1067	1
CLAMP,HOSE (Ref # 92171)	92171-0309	1
CLAMP,HOSE (Ref # 92171A)	92171-0386	1