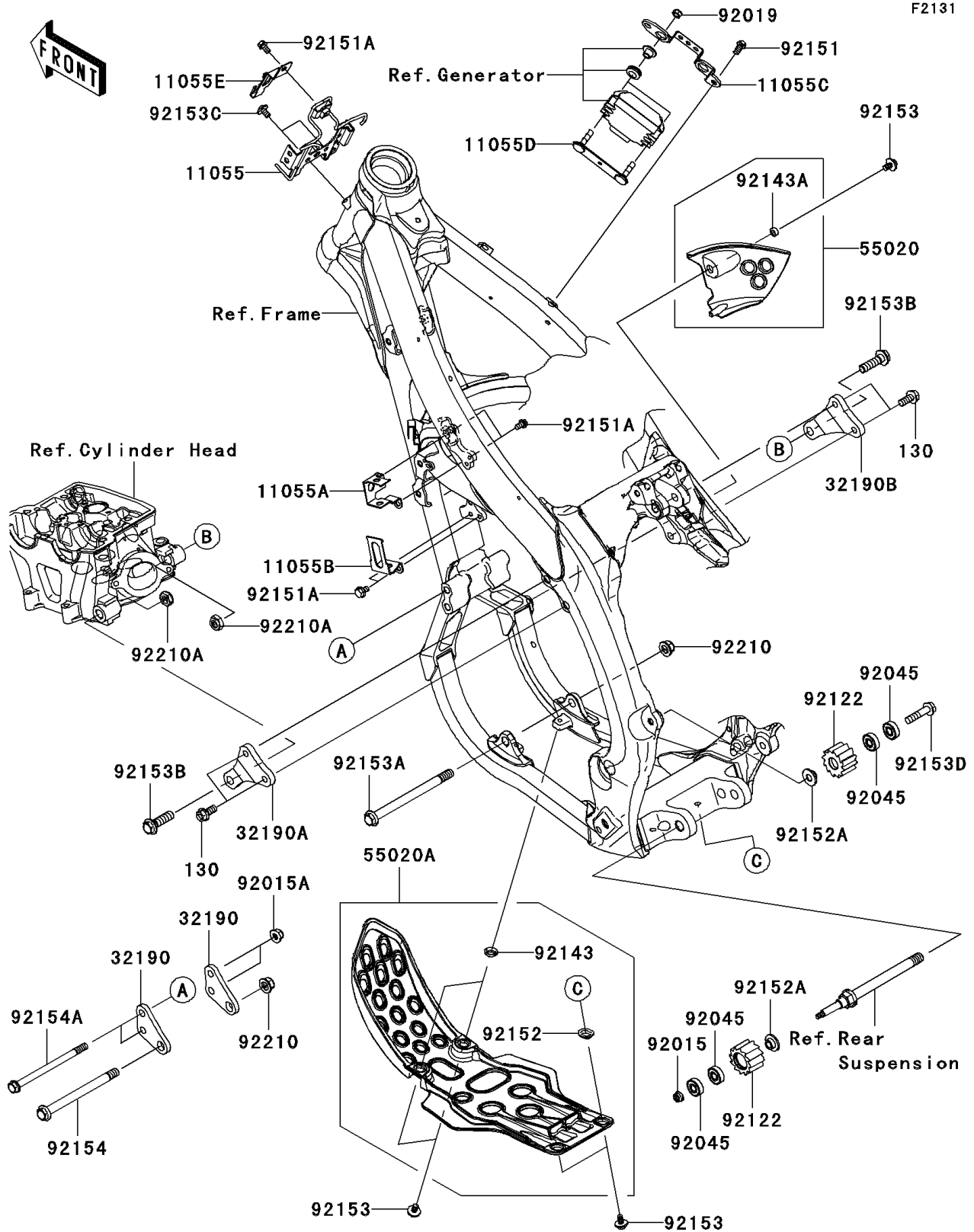


2009 KX™ 450F PARTS DIAGRAM

Frame Fittings



2009 KX™ 450F PARTS LIST

Frame Fittings

ITEM NAME	PART NUMBER	QUANTITY
BOLT-FLANGED,8X18 (Ref # 130)	130CA0818	4
BRACKET,ECU (Ref # 11055)	11055-0714	1
BRACKET,BANK SENSOR (Ref # 11055A)	11055-0716	1
BRACKET,CONDENSER (Ref # 11055B)	11055-0717	1
BRACKET,REGULATOR,UPP (Ref # 11055C)	11055-0868	1
BRACKET,REGULATOR,LWR (Ref # 11055D)	11055-0870	1
BRACKET,DIAGNOSTIC CONNECTOR (Ref # 11055E)	11055-1416	1
BRACKET-ENGINE,FR (Ref # 32190)	32190-0386	2
BRACKET-ENGINE,UPP,LH (Ref # 32190A)	32190-0387	1
BRACKET-ENGINE,UPP,RH (Ref # 32190B)	32190-0388	1
GUARD,ENGINE,SIDE,RH,EBONY (Ref # 55020)	55020-0434-6C	1
GUARD,ENGINE,LWR,EBONY (Ref # 55020A)	55020-0440-6C	1
NUT,LOCK,FLANGED,6MM (Ref # 92015)	92015-1339	1
NUT,8MM (Ref # 92015A)	92015-1432	2
NUT,LOCK,6MM (Ref # 92019)	92019-008	2
BEARING-BALL,608LLU/2A (Ref # 92045)	92045-0060	4
ROLLER,CHAIN GUIDE (Ref # 92122)	92122-0016	2
COLLAR (Ref # 92143)	92143-1196	2
COLLAR (Ref # 92143A)	92143-1307	1
BOLT,6X12 (Ref # 92151)	92151-1133	2
BOLT,FLANGED,6X10 (Ref # 92151A)	92151-1233	5
COLLAR (Ref # 92152)	92152-0052	2
COLLAR (Ref # 92152A)	92152-0459	2
BOLT,6X12 (Ref # 92153)	92153-0503	5
BOLT,FLANGED,10X137 (Ref # 92153A)	92153-0704	1
BOLT,FLANGED,10X35 (Ref # 92153B)	92153-0802	2
BOLT,SOCKET,6X10 (Ref # 92153C)	92153-1628	2
BOLT,FLANGED,8X35 (Ref # 92153D)	92153-1652	1
BOLT,FLANGED,10X124 (Ref # 92154)	92154-0173	1

2009 KX™ 450F PARTS LIST

Frame Fittings

ITEM NAME	PART NUMBER	QUANTITY
BOLT,FLANGED,8X122 (Ref # 92154A)	92154-0174	2
NUT,LOCK,FLANGED,10MM (Ref # 92210)	92210-1080	2
NUT,LOCK,10MM (Ref # 92210A)	92210-1184	2