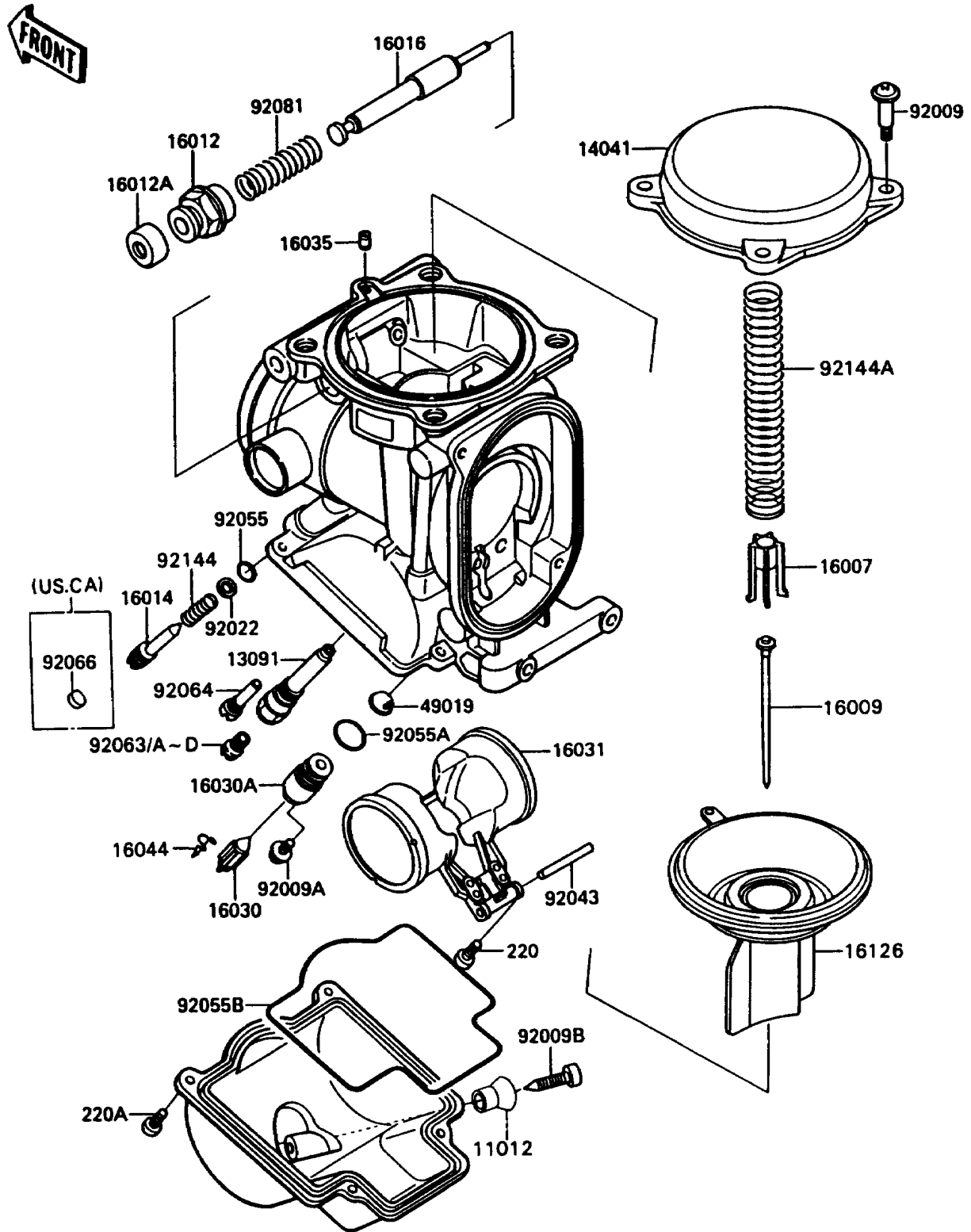


1992 Ninja® ZX™ -11 PARTS DIAGRAM

Carburetor Parts(015043&NAMI.)

E1612A



1992 Ninja® ZX™ -11 PARTS LIST

Carburetor Parts(015043&NAMI.)

| ITEM NAME | PART NUMBER | QUANTITY |
|-------------------------------------|-------------|----------|
| CAP,DRAIN SCREW (Ref # 11012) | 11012-1675 | 4 |
| HOLDER,NEEDLE JET (Ref # 13091) | 13091-1698 | 4 |
| COVER-COMP,MIXING (Ref # 14041) | 14041-1100 | 4 |
| SEAT-SPRING,VALVE (Ref # 16007) | 16007-1117 | 4 |
| NEEDLE-JET,N60U (Ref # 16009) | 16009-1621 | 4 |
| CAP-STARTER PLUNGER (Ref # 16012) | 16012-1051 | 4 |
| CAP-STARTER PLUNGER (Ref # 16012A) | 16012-1052 | 4 |
| SCREW-PILOT AIR (Ref # 16014) | 16014-1064 | 4 |
| PLUNGER,STARTER (Ref # 16016) | 16016-1061 | 4 |
| VALVE-FLOAT (Ref # 16030) | 16030-1007 | 4 |
| SEAT VALVE,FLOAT (Ref # 16030A) | 16030-1069 | 4 |
| FLOAT (Ref # 16031) | 16031-1070 | 4 |
| JET-AIR,LEAK (Ref # 16035) | 16035-1055 | 4 |
| CLAMP,FLOAT VALVE (Ref # 16044) | 16044-007 | 4 |
| VALVE,VACUUM (Ref # 16126) | 16126-1247 | 4 |
| FILTER-FUEL,STRAINER (Ref # 49019) | 49019-3707 | 4 |
| SCREW,4X4.4 (Ref # 92009) | 92009-1549 | 15 |
| SCREW,4X8 (Ref # 92009A) | 92009-1550 | 4 |
| SCREW,DRAIN,M6X0.75 (Ref # 92009B) | 92009-1551 | 4 |
| WASHER,PLAIN (Ref # 92022) | 92022-1003 | 4 |
| PIN,FLOAT (Ref # 92043) | 92043-1207 | 4 |
| RING-O,PILOT ADJUST (Ref # 92055) | 92055-1002 | 4 |
| RING-O,VALVE SEAT (Ref # 92055A) | 92055-1425 | 4 |
| RING-O,FLOAT CHAMBER (Ref # 92055B) | 92055-1426 | 4 |
| JET-MAIN,#140 (Ref # 92063) | 92063-1013 | 4 |
| JET-MAIN,#135 (Ref # 92063A) | 92063-1014 | 4 |
| JET-MAIN,#138 (Ref # 92063B) | 92063-1015 | 4 |
| JET-MAIN,#142 (Ref # 92063C) | 92063-1016 | 4 |
| JET-MAIN,#145 (Ref # 92063D) | 92063-1017 | 4 |

1992 Ninja® ZX™ -11 PARTS LIST

Carburetor Parts(015043&NAMI.)

| ITEM NAME | PART NUMBER | QUANTITY |
|--|-------------|----------|
| JET-PILOT,#38 (Ref # 92064) | 92064-1119 | 4 |
| PLUG,PILOT AIR SCREW,6.9X2 (Ref # 92066) | 92066-1051 | 4 |
| SPRING,STARTER PLUNGER (Ref # 92081) | 92081-1761 | 4 |
| SPRING,PILOT AIR SCREW (Ref # 92144) | 92144-1349 | 4 |
| SPRING,THROTTLE VALVE (Ref # 92144A) | 92144-1535 | 4 |
| SCREW-PAN-CROS (Ref # 220) | 220D0408 | 4 |
| SCREW-PAN-CROS (Ref # 220A) | 220D0410 | 16 |