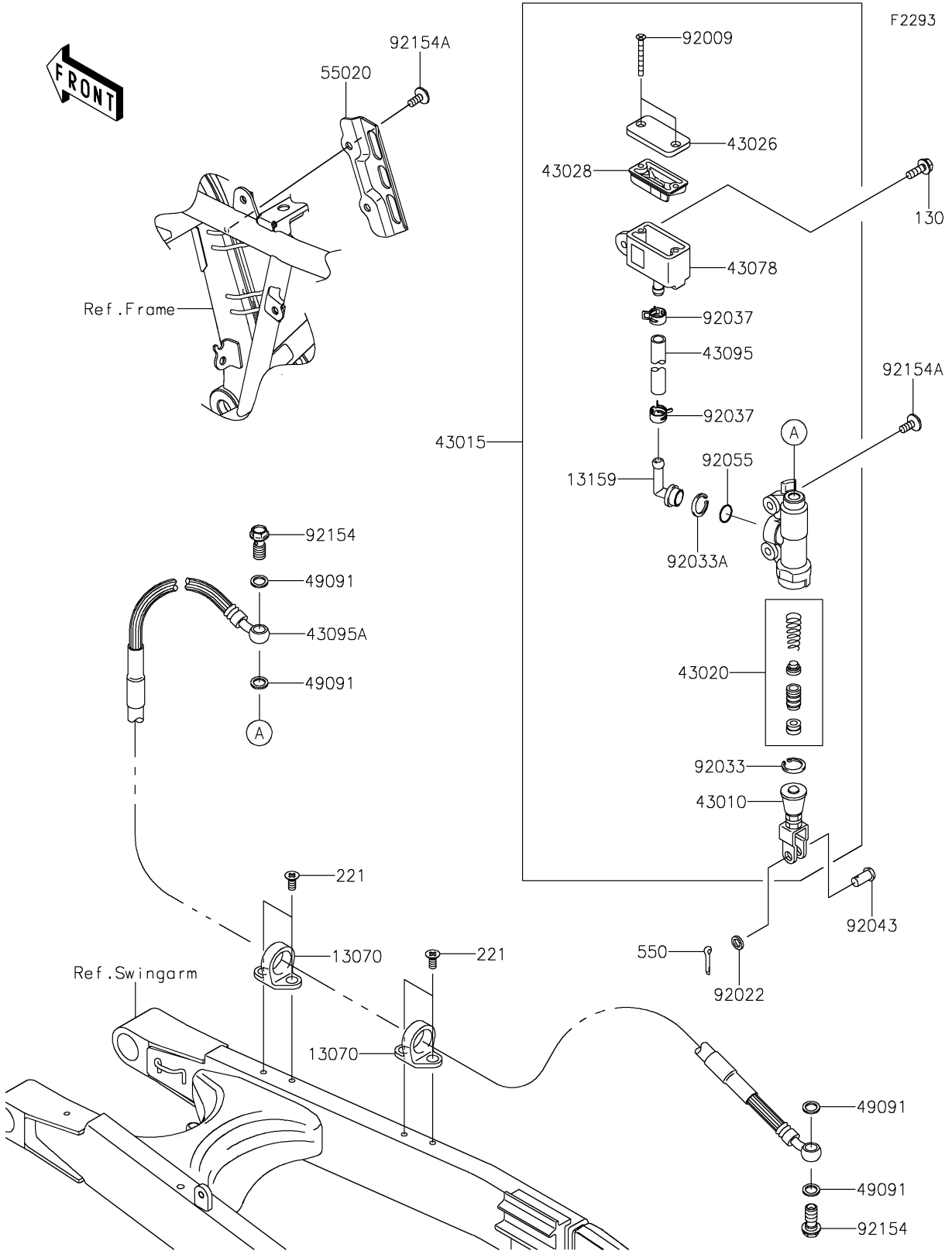


# 2025 KLX300SM PARTS DIAGRAM

## Rear Master Cylinder



## 2025 KLX300SM PARTS LIST

### Rear Master Cylinder

| ITEM NAME                                   | PART NUMBER | QUANTITY |
|---|-------------|----------|
| GUIDE,HOSE (Ref # 13070)                    | 13070-1144  | 2        |
| CONNECTOR (Ref # 13159)                     | 13159-1056  | 1        |
| ROD-ASSY-BRAKE (Ref # 43010)                | 43010-1068  | 1        |
| CYLINDER-ASSY-MASTER,RR (Ref # 43015)       | 43015-0128  | 1        |
| PISTON-COMP-BRAKE (Ref # 43020)             | 43020-1094  | 1        |
| CAP-BRAKE (Ref # 43026)                     | 43026-1075  | 1        |
| DIAPHRAGM (Ref # 43028)                     | 43028-1067  | 1        |
| RESERVOIR (Ref # 43078)                     | 43078-1189  | 1        |
| HOSE-BRAKE,RR MASTER CYLINDER (Ref # 43095) | 43095-0451  | 1        |
| HOSE-BRAKE,RR (Ref # 43095A)                | 43095-0691  | 1        |
| WASHER-SEAL,10.1X14.5X1.5 (Ref # 49091)     | 49091-0001  | 4        |
| GUARD,RR BRAKE RESERVOIR HOSE (Ref # 55020) | 55020-1489  | 1        |
| SCREW,4X40 (Ref # 92009)                    | 92009-1596  | 2        |
| WASHER,8.5X13X1 (Ref # 92022)               | 92022-1028  | 1        |
| RING-SNAP,20.9X24.6X1.2 (Ref # 92033)       | 92033-0079  | 1        |
| RING-SNAP,20.5MM (Ref # 92033A)             | 92033-1186  | 1        |
| CLAMP (Ref # 92037)                         | 92037-1710  | 2        |
| PIN (Ref # 92043)                           | 92043-0004  | 1        |
| RING-O,14.8X2.4 (Ref # 92055)               | 92055-0741  | 1        |
| BOLT,FLANGED,10X23 (Ref # 92154)            | 92154-0732  | 2        |
| BOLT,SOCKET,6X14 (Ref # 92154A)             | 92154-2735  | 4        |
| BOLT-FLANGED,6X18 (Ref # 130)               | 130BA0618   | 1        |
| SCREW-CSK-CROS,6X10 (Ref # 221)             | 221AA0610   | 4        |
| PIN-COTTER,2.0X15 (Ref # 550)               | 550AA2015   | 1        |