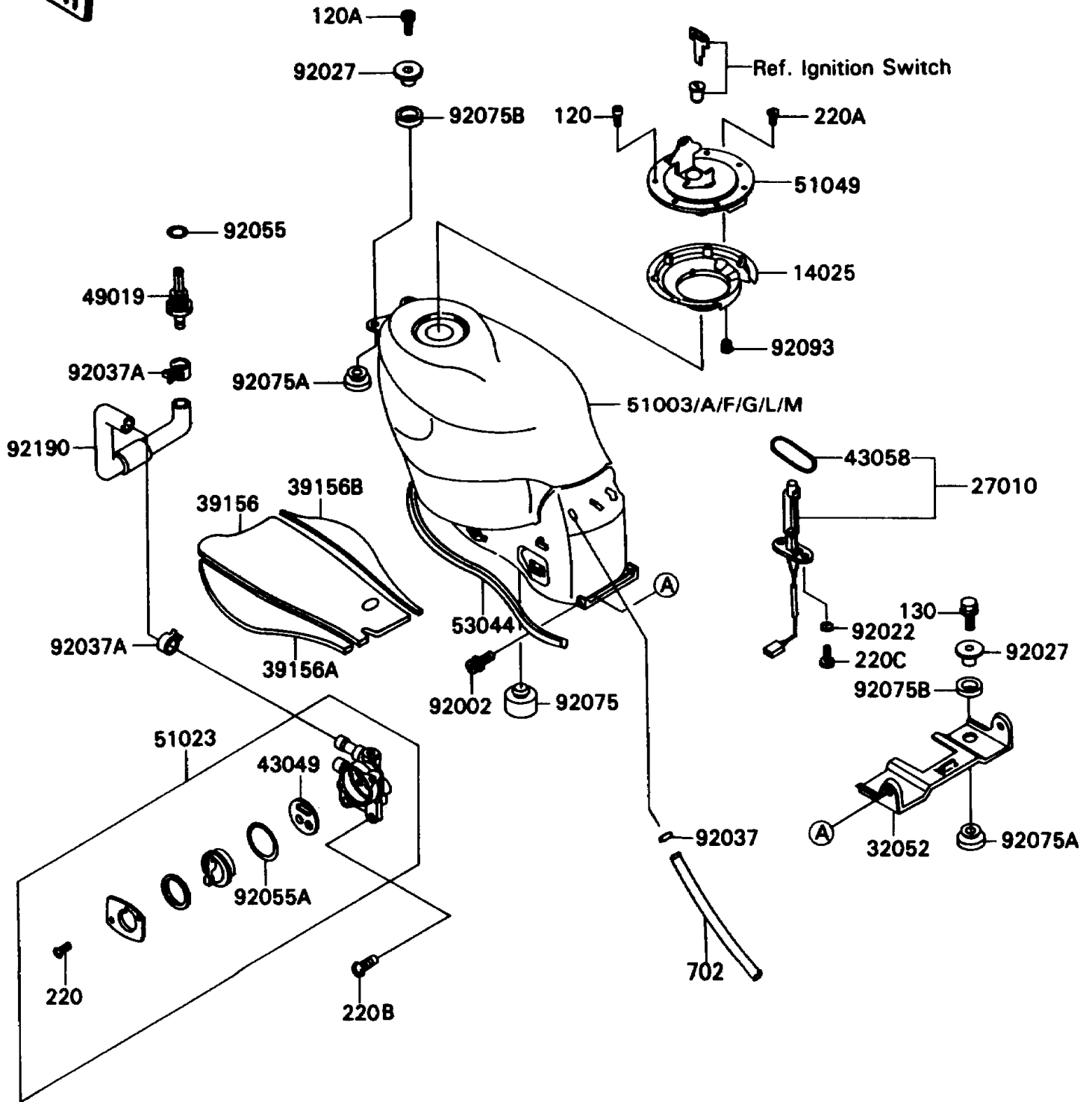


# 1993 Ninja® ZX™ -11 PARTS DIAGRAM

Fuel Tank

F2410



# 1993 Ninja® ZX™ -11 PARTS LIST

## Fuel Tank

ITEM NAME	PART NUMBER	QUANTITY
COVER,TANK CAP (Ref # 14025)	14025-1913	1
SWITCH,FUEL LEVEL (Ref # 27010)	27010-1287	1
BRACKET-TANK,RR (Ref # 32052)	32052-1296	1
PAD,FUEL TANK,CNT (Ref # 39156)	39156-1189	1
PAD,FUEL TANK,LH (Ref # 39156A)	39156-1190	1
PAD,FUEL TANK,RH (Ref # 39156B)	39156-1191	1
PACKING,TAP VALVE (Ref # 43049)	43049-1066	1
RING,FUEL LEVEL SWITCH (Ref # 43058)	43058-1004	1
FILTER-FUEL (Ref # 49019)	49019-1070	1
TANK-COMP-FUEL,EBONY (Ref # 51003L)	51003-5396-H8	1
TANK-COMP-FUEL,EBONY (Ref # 51003M)	51003-5400-H8	1
TAP-ASSY,FUEL (Ref # 51023)	51023-1169	1
CAP-TANK,FUEL (Ref # 51049)	51049-1091	1
TRIM,FUEL TANK (Ref # 53044)	53044-1236	1
BOLT,SOCKET,6X14 (Ref # 92002)	92002-1175	2
WASHER,5.2X10X1.5 (Ref # 92022)	92022-1023	2
COLLAR,L=13.1 (Ref # 92027)	92027-251	4
CLAMP,TUBE (Ref # 92037)	92037-010	1
CLAMP (Ref # 92037A)	92037-1181	2
RING-O,11.5X1.5 (Ref # 92055)	92055-1387	1
RING-O,TAP LEVER (Ref # 92055A)	92055-1419	1
DAMPER (Ref # 92075)	92075-015	2
DAMPER,MALE (Ref # 92075A)	92075-174	4
DAMPER,FEMALE (Ref # 92075B)	92075-175	4
SEAL,FUEL TANK CAP (Ref # 92093)	92093-1030	1
TUBE,FUEL (Ref # 92190)	92190-1117	1
BOLT-SOCKET (Ref # 120)	120S0512	7
BOLT-SOCKET,6X20 (Ref # 120A)	120S0620	2
BOLT-FLANGED (Ref # 130)	130J0620	2

# 1993 Ninja® ZX™ -11 PARTS LIST

## Fuel Tank

ITEM NAME	PART NUMBER	QUANTITY
SCREW-PAN-CROS (Ref # 220)	220B0308	2
SCREW-PAN-CROS (Ref # 220A)	220C0508	1
SCREW-PAN-CROS (Ref # 220B)	220D0616	2
SCREW-PAN-CROS (Ref # 220C)	220X0514	2
TUBE-RUBBER,7X10X400 (Ref # 702)	702A07400	1