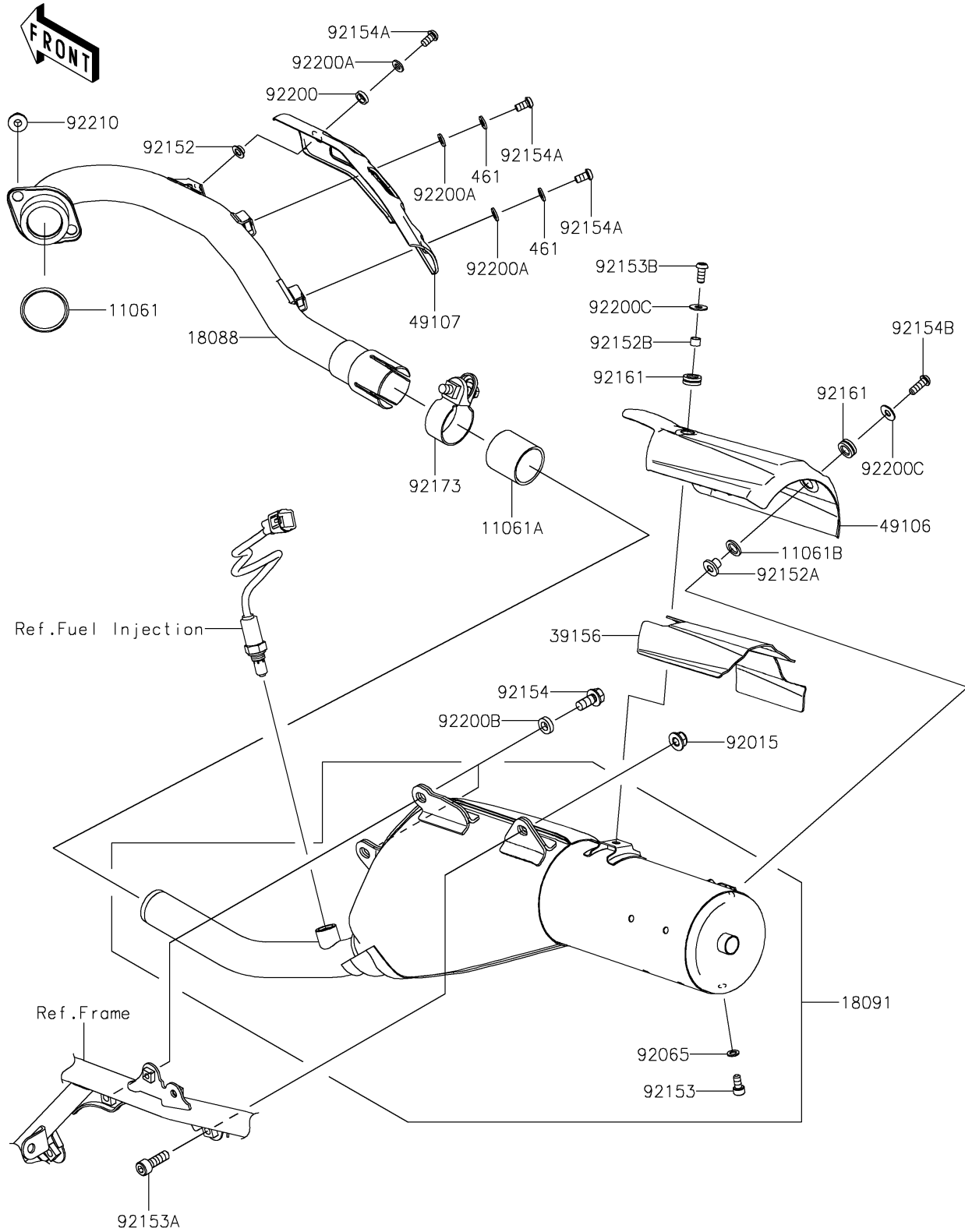


# 2022 KLX300 PARTS DIAGRAM

Muffler(s)

E1140



## 2022 KLX300 PARTS LIST

### Muffler(s)

ITEM NAME	PART NUMBER	QUANTITY
GASKET,EX PIPE (Ref # 11061)	11061-0027	1
GASKET,EXHAUST PIPE CONNECTING (Ref # 11061A)	11061-1055	1
GASKET (Ref # 11061B)	11061-1398	1
PIPE-EXHAUST (Ref # 18088)	18088-1475	1
BODY-COMP-MUFFLER (Ref # 18091)	18091-1196	1
PAD,MUFFLER COVER (Ref # 39156)	39156-2613	1
COVER-MUFFLER (Ref # 49106)	49106-0856	1
COVER-EXHAUST PIPE (Ref # 49107)	49107-0826	1
NUT,8MM (Ref # 92015)	92015-1432	1
GASKET (Ref # 92065)	92065-096	1
COLLAR,6.2X8.5X13 (Ref # 92152)	92152-2662	1
COLLAR (Ref # 92152A)	92152-2814	1
COLLAR,6.5X8.5X6 (Ref # 92152B)	92152-2817	1
BOLT,SOCKET,6X12 (Ref # 92153)	92153-1347	1
BOLT,SOCKET,8X25 (Ref # 92153A)	92153-1350	1
BOLT,SOCKET,6X14 (Ref # 92153B)	92153-1886	1
BOLT-FLANGED,8X14 (Ref # 92154)	92154-3782	2
BOLT,SOCKET,6X11.5 (Ref # 92154A)	92154-4087	3
BOLT,SOCKET,6X18 (Ref # 92154B)	92154-4279	1
DAMPER (Ref # 92161)	92161-1475	2
CLAMP,38MM (Ref # 92173)	92173-0997	1
WASHER,8.8X12.5X3 (Ref # 92200)	92200-2306	1
WASHER,6.2X12X1.6 (Ref # 92200A)	92200-2320	3
WASHER,8.1X15X4.0 (Ref # 92200B)	92200-2482	2
WASHER,6.5X16X1.0 (Ref # 92200C)	92200-3712	2
NUT,8MM (Ref # 92210)	92210-0076	2
WASHER-SPRING,6MM (Ref # 461)	461S0600	2