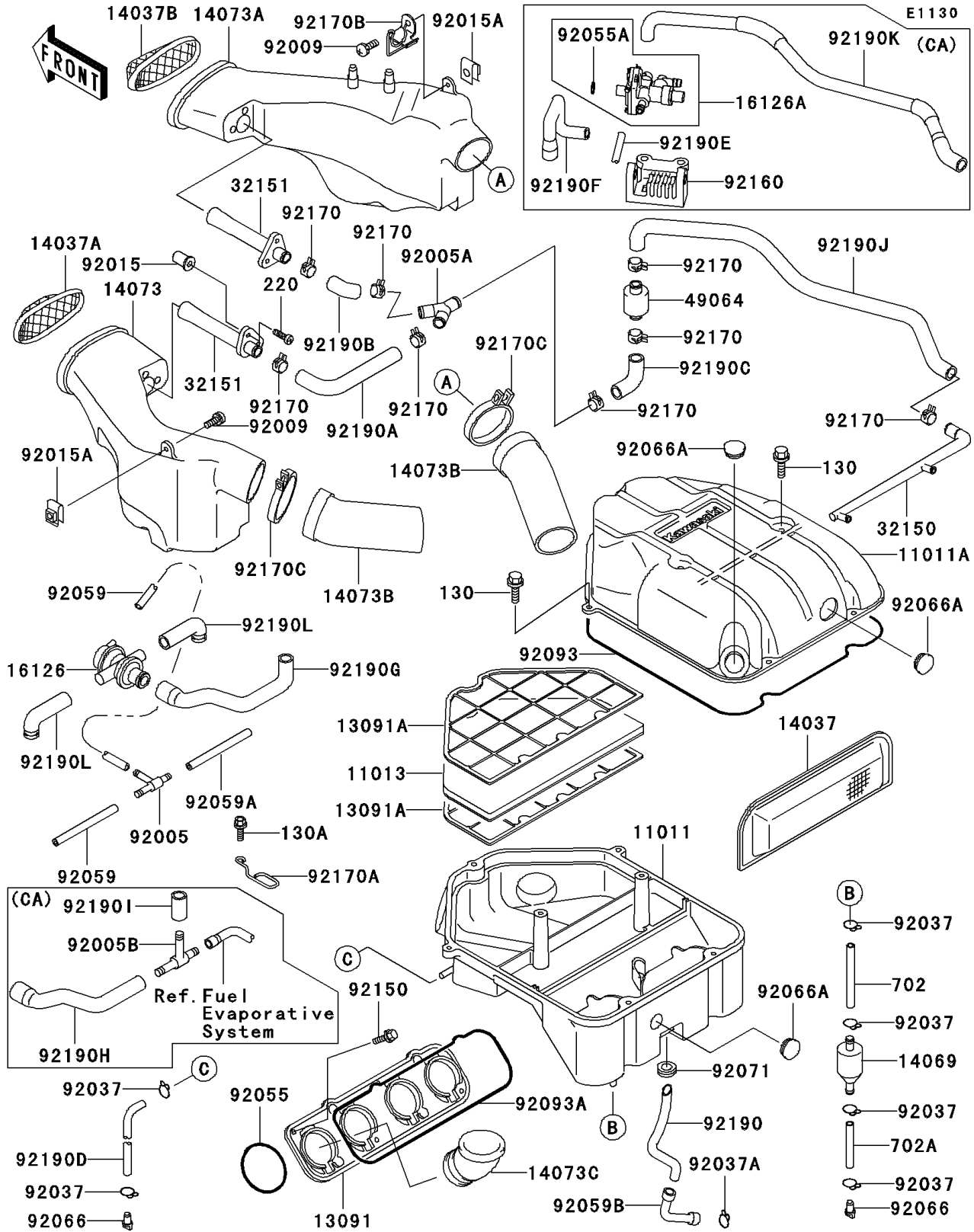


1995 Ninja® ZX™ -11 PARTS DIAGRAM

Air Cleaner



1995 Ninja® ZX™ -11 PARTS LIST

Air Cleaner

| ITEM NAME | PART NUMBER | QUANTITY |
|------------------------------------|-------------|----------|
| CASE-AIR FILTER,LWR (Ref # 11011) | 11011-1396 | 1 |
| CASE-AIR FILTER,UPP (Ref # 11011A) | 11011-1397 | 1 |
| ELEMENT-AIR FILTER (Ref # 11013) | 11013-1227 | 1 |
| HOLDER,CARBURETOR (Ref # 13091) | 13091-1818 | 1 |
| HOLDER,ELEMENT (Ref # 13091A) | 13091-1819 | 2 |
| SCREEN,AIR FILTER (Ref # 14037) | 14037-1168 | 1 |
| SCREEN,AIR DUCT,LH (Ref # 14037A) | 14037-1169 | 1 |
| SCREEN,AIR DUCT,RH (Ref # 14037B) | 14037-1170 | 1 |
| BREATHER (Ref # 14069) | 14069-1051 | 1 |
| DUCT,AIR INTAKE,LH (Ref # 14073) | 14073-1552 | 1 |
| DUCT,AIR INTAKE,RH (Ref # 14073A) | 14073-1553 | 1 |
| DUCT,AIR FILTER (Ref # 14073B) | 14073-1554 | 2 |
| DUCT,AIR FILTER (Ref # 14073C) | 14073-1575 | 4 |
| VALVE,AIR SWITCH (Ref # 16126) | 16126-1144 | 1 |
| PIPE (Ref # 32150) | 32150-1820 | 1 |
| PIPE,AIR VENT (Ref # 32151) | 32151-1478 | 2 |
| FILTER-AIR (Ref # 49064) | 49064-1055 | 1 |
| FITTING,TUBE,T-TYPE (Ref # 92005) | 92005-1017 | 1 |
| FITTING,Y-TIPE (Ref # 92005A) | 92005-1250 | 1 |
| SCREW,5X16 (Ref # 92009) | 92009-1654 | 2 |
| NUT,WELL,5MM (Ref # 92015) | 92015-1640 | 4 |
| NUT,5MM (Ref # 92015A) | 92015-1798 | 2 |
| CLAMP,TUBE (Ref # 92037) | 92037-147 | 8 |
| CLAMP,TUBE (Ref # 92037A) | 92037-213 | 1 |
| RING-O,67.7X3.1 (Ref # 92055) | 92055-1434 | 4 |
| TUBE,4X9X190 (Ref # 92059) | 92059-1032 | 2 |
| TUBE,FUEL,4X9X140 (Ref # 92059A) | 92059-1230 | 1 |
| TUBE (Ref # 92059B) | 92059-1551 | 1 |
| PLUG,DRAIN (Ref # 92066) | 92066-1211 | 3 |

1995 Ninja® ZX™ -11 PARTS LIST

Air Cleaner

| ITEM NAME | PART NUMBER | QUANTITY |
|---|-------------|----------|
| PLUG (Ref # 92066A) | 92066-1389 | 3 |
| GROMMET (Ref # 92071) | 92071-1165 | 1 |
| SEAL,AIR FILTER CASE (Ref # 92093) | 92093-1349 | 1 |
| SEAL,AIR FILTER (Ref # 92093A) | 92093-1350 | 1 |
| BOLT,5X16 (Ref # 92150) | 92150-1363 | 8 |
| BOLT-FLANGED,6X16 (Ref # 130) | 130H0616 | 7 |
| BOLT-FLANGED (Ref # 130A) | 130J0610 | 2 |
| SCREW-PAN-CROS (Ref # 220) | 220C0520 | 4 |
| TUBE-RUBBER (Ref # 702) | 702A07200 | 1 |
| TUBE-RUBBER,7X10X280 (Ref # 702A) | 702A07280 | 1 |
| CLAMP (Ref # 92170) | 92170-1060 | 8 |
| CLAMP (Ref # 92170A) | 92170-1191 | 2 |
| CLAMP,AIR DUCT (Ref # 92170B) | 92170-1390 | 1 |
| CLAMP,65MM (Ref # 92170C) | 92170-1526 | 2 |
| TUBE,BLOWBY (Ref # 92190) | 92190-1077 | 1 |
| TUBE,AIR PIPE,LH (Ref # 92190A) | 92190-1352 | 1 |
| TUBE,AIR PIPE,RH (Ref # 92190B) | 92190-1353 | 1 |
| TUBE,VALVE-HOLDER (Ref # 92190C) | 92190-1354 | 1 |
| TUBE,DIRT SIDE (Ref # 92190D) | 92190-1372 | 2 |
| TUBE (Ref # 92190L) | 92190-1436 | 2 |
| VALVE,CANISTER (Ref # 16126A) | 16126-1275 | 1 |
| FITTING,T-TYPE (Ref # 92005B) | 92005-1252 | 1 |
| RING-O (Ref # 92055A) | 92055-1524 | 1 |
| DAMPER,VALVE (Ref # 92160) | 92160-1241 | 1 |
| TUBE,VALVE-HOLDER (Ref # 92190E) | 92190-1380 | 1 |
| TUBE,FILTER-VALVE (Ref # 92190F) | 92190-1381 | 1 |
| TUBE,VALVE-AIR FILTER (Ref # 92190G) | 92190-1419 | 1 |
| TUBE,SWITCH-FITTING (Ref # 92190H) | 92190-1420 | 1 |
| TUBE,FITTING-FILTER CASE (Ref # 92190I) | 92190-1421 | 1 |

1995 Ninja® ZX™ -11 PARTS LIST

Air Cleaner

| ITEM NAME | PART NUMBER | QUANTITY |
|---------------------------------------|-------------|----------|
| TUBE,FILTER-CARBURETOR (Ref # 92190J) | 92190-1432 | 1 |
| TUBE,VALVE-CARBURETOR (Ref # 92190K) | 92190-1433 | 1 |