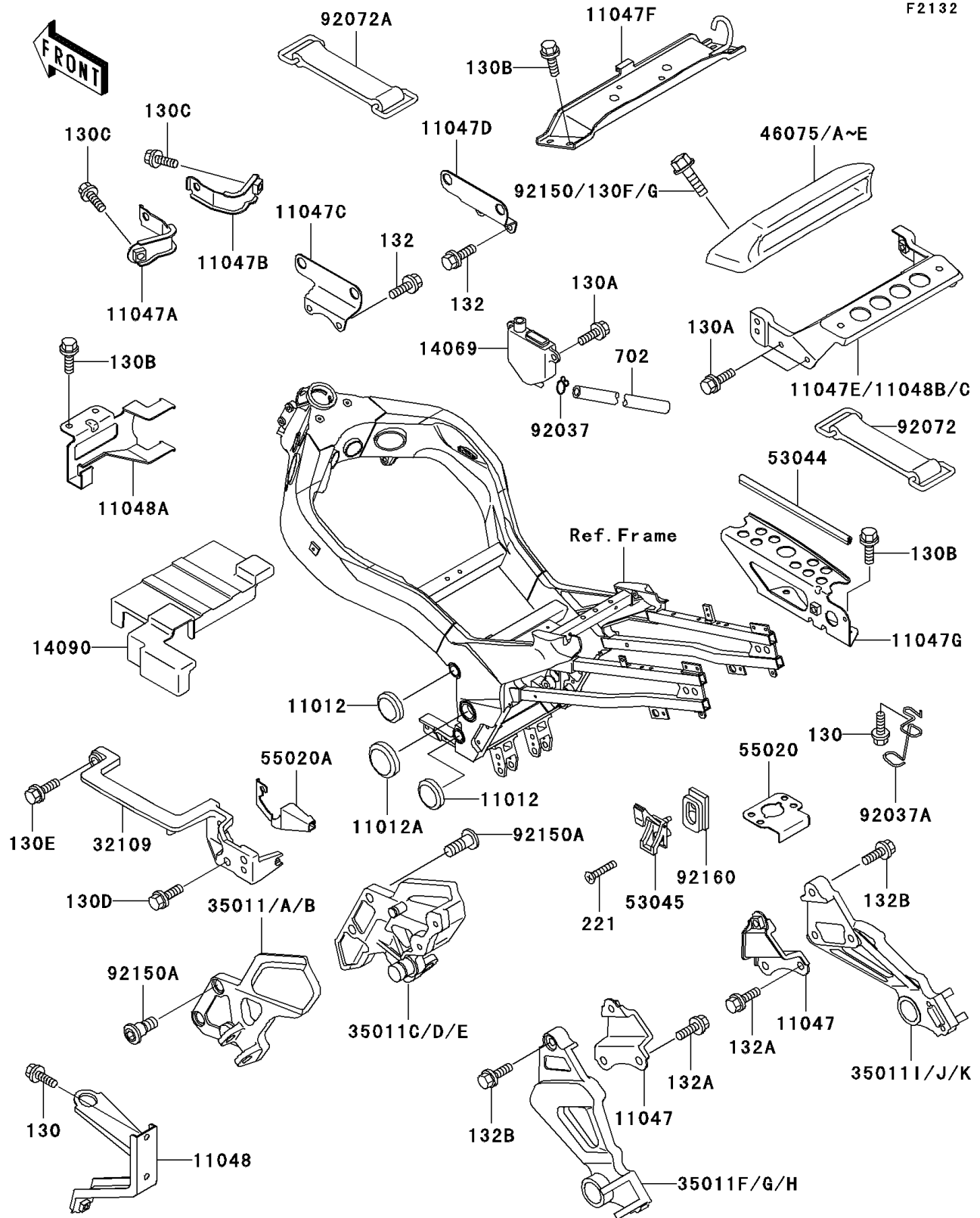


1995 Ninja® ZX™ -11 PARTS DIAGRAM

Battery Case



1995 Ninja® ZX™ -11 PARTS LIST

Battery Case

| ITEM NAME | PART NUMBER | QUANTITY |
|---|-------------|----------|
| CAP (Ref # 11012) | 11012-1460 | 4 |
| CAP (Ref # 11012A) | 11012-1657 | 2 |
| BRACKET,REAR STAY (Ref # 11047) | 11047-1878 | 2 |
| BRACKET,RADIATOR,UPP,LH (Ref # 11047A) | 11047-1931 | 1 |
| BRACKET,RADIATOR,UPP,RH (Ref # 11047B) | 11047-1932 | 1 |
| BRACKET,IGNITION COIL,LH (Ref # 11047C) | 11047-1933 | 1 |
| BRACKET,IGNITION COIL,RH (Ref # 11047D) | 11047-1934 | 1 |
| BRACKET,SEAT LOCK (Ref # 11047F) | 11047-1961 | 1 |
| BRACKET,HELMET LOCK (Ref # 11047G) | 11047-1962 | 1 |
| BRACKET,OIL COOLER&RADIATOR (Ref # 11048) | 11048-1169 | 1 |
| BRACKET,FUEL PUMP (Ref # 11048A) | 11048-1180 | 1 |
| BRACKET,TAIL GRIP (Ref # 11048B) | 11048-1325 | 1 |
| BREATHER (Ref # 14069) | 14069-1054 | 1 |
| COVER,BATTERY (Ref # 14090) | 14090-1305 | 1 |
| GRIP-FRAME (Ref # 32109) | 32109-1233 | 1 |
| BOLT-FLANGED (Ref # 130) | 130J0610 | 3 |
| BOLT-FLANGED,6X14,BLACK (Ref # 130A) | 130J0614 | 6 |
| BOLT-FLANGED,6X16,BLACK (Ref # 130B) | 130J0616 | 8 |
| BOLT-FLANGED (Ref # 130C) | 130J0812 | 2 |
| BOLT-FLANGED,8X20 (Ref # 130D) | 130J0820 | 1 |
| BOLT-FLANGED,8X25,BLACK (Ref # 130E) | 130J0825 | 1 |
| BOLT-FLANGED,8X35,BLACK (Ref # 130F) | 130J0835 | 2 |
| BOLT-FLANGED-SMALL,6X10 (Ref # 132) | 132J0610 | 4 |
| BOLT-FLANGED-SMALL,8X12 (Ref # 132A) | 132J0812 | 4 |
| BOLT-FLANGED-SMALL (Ref # 132B) | 132J0825 | 2 |
| SCREW-CSK-CROS,6X20 (Ref # 221) | 221E0620 | 4 |
| TRIM,L=165 (Ref # 53044) | 53044-1270 | 1 |
| HOOK-ASSY,ROPE (Ref # 53045) | 53045-1057 | 4 |
| GUARD,SEAT STRIKER (Ref # 55020) | 55020-1498 | 1 |

1995 Ninja® ZX™ -11 PARTS LIST

Battery Case

| ITEM NAME | PART NUMBER | QUANTITY |
|---|---------------|----------|
| GUARD,SEAT LOCK (Ref # 55020A) | 55020-1499 | 1 |
| CLAMP,TUBE (Ref # 92037) | 92037-147 | 1 |
| CLAMP,HOSE (Ref # 92037A) | 92037-1875 | 1 |
| BAND,L=100 (Ref # 92072) | 92072-071 | 1 |
| BAND,BATTERY (Ref # 92072A) | 92072-1188 | 1 |
| BOLT,SOCKET,8X20 (Ref # 92150A) | 92150-1839 | 4 |
| DAMPER,ROPE HOOK (Ref # 92160) | 92160-1042 | 4 |
| TUBE-RUBBER,7X10X380 (Ref # 702) | 702A07380 | 1 |
| STAY,FR,LH,G.GRAY (Ref # 35011) | 35011-1635-GD | 1 |
| STAY,FR,LH,SILVER NO.35 (Ref # 35011B) | 35011-1635-VZ | 1 |
| STAY,FR,RH,G.GRAY (Ref # 35011C) | 35011-1636-GD | 1 |
| STAY,FR,RH,SILVER NO.35 (Ref # 35011E) | 35011-1636-VZ | 1 |
| STAY,RR,LH,G.GRAY (Ref # 35011F) | 35011-1640-GD | 1 |
| STAY,RR,LH,SILVER NO.35 (Ref # 35011H) | 35011-1640-VZ | 1 |
| STAY,RR,RH,G.GRAY (Ref # 35011I) | 35011-1641-GD | 1 |
| STAY,RR,RH,SILVER NO.35 (Ref # 35011K) | 35011-1641-VZ | 1 |
| GRIP,TAIL,P.P.BLACK MICA (Ref # 46075C) | 46075-1104-20 | 1 |
| GRIP,TAIL,P.P.BLACK MICA (Ref # 46075D) | 46075-1104-5M | 1 |