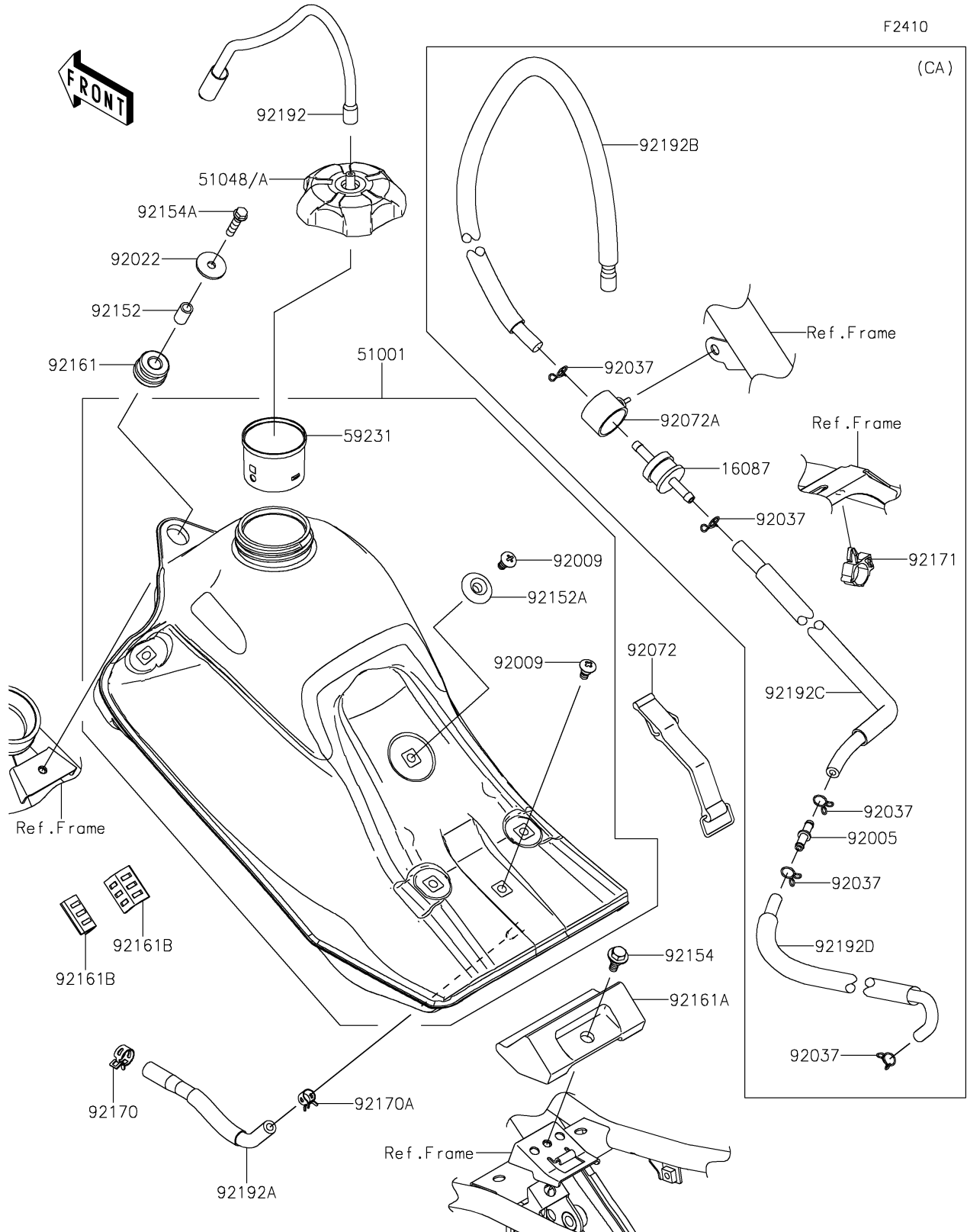


2023 KLX® 300R PARTS DIAGRAM

Fuel Tank



2023 KLX®300R PARTS LIST

Fuel Tank

| ITEM NAME | PART NUMBER | QUANTITY |
|--|-------------|----------|
| VALVE-CHECK (Ref # 16087) | 16087-0008 | 1 |
| TANK-COMP-FUEL (Ref # 51001) | 51001-0887 | 1 |
| CAP-ASSY-TANK (Ref # 51048) | 51048-0576 | 1 |
| CAP-ASSY-TANK (Ref # 51048A) | 51048-0593 | 1 |
| FILLER (Ref # 59231) | 59231-0745 | 1 |
| FITTING (Ref # 92005) | 92005-0721 | 1 |
| SCREW,6MM (Ref # 92009) | 92009-1971 | 2 |
| WASHER,6.5X24X2 (Ref # 92022) | 92022-1690 | 1 |
| CLAMP (Ref # 92037) | 92037-1712 | 5 |
| BAND,FUEL TANK (Ref # 92072) | 92072-0835 | 1 |
| BAND (Ref # 92072A) | 92072-1438 | 1 |
| COLLAR,6.8X10X16 (Ref # 92152) | 92152-1552 | 1 |
| COLLAR (Ref # 92152A) | 92152-2589 | 1 |
| BOLT,FLANGED,6X16 (Ref # 92154) | 92154-0385 | 1 |
| BOLT,FLANGED,6X25 (Ref # 92154A) | 92154-0520 | 1 |
| DAMPER,FUEL TANK,FR (Ref # 92161) | 92161-1914 | 1 |
| DAMPER (Ref # 92161A) | 92161-2199 | 1 |
| DAMPER (Ref # 92161B) | 92161-2220 | 2 |
| CLAMP (Ref # 92170) | 92170-1492 | 1 |
| CLAMP (Ref # 92170A) | 92170-1493 | 1 |
| CLAMP,BRAKE HOSE (Ref # 92171) | 92171-0316 | 1 |
| TUBE (Ref # 92192) | 92192-0161 | 1 |
| TUBE,FUEL TANK-FUEL PUMP (Ref # 92192A) | 92192-1960 | 1 |
| TUBE,TANK CAP-CHECK VALVE (Ref # 92192B) | 92192-1966 | 1 |
| TUBE,VALVE-FITTING (Ref # 92192C) | 92192-1967 | 1 |
| TUBE,FITTING-CANISTER (Ref # 92192D) | 92192-1968 | 1 |