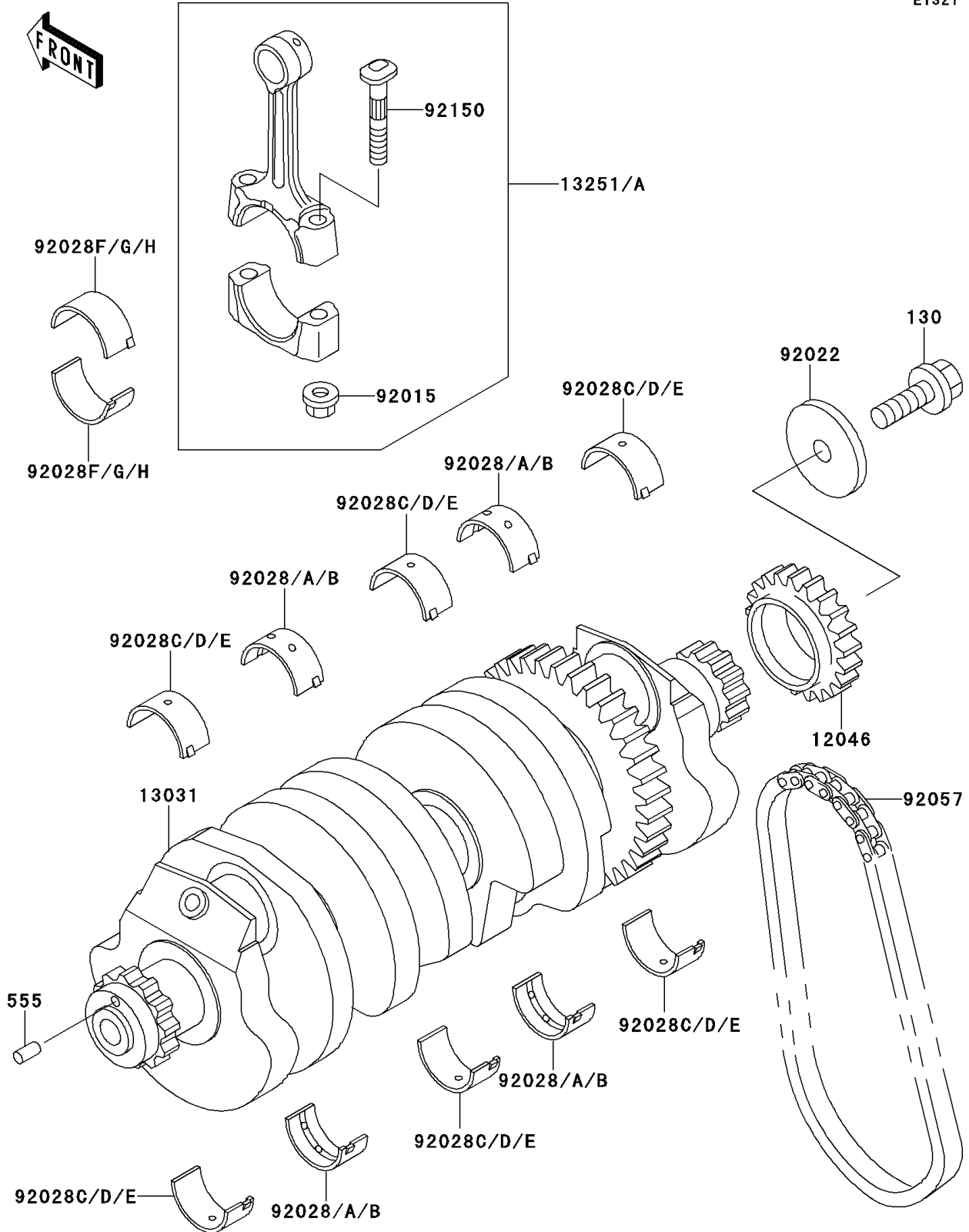


# 1995 GPZ 1100 PARTS DIAGRAM

Crankshaft

E1321



# 1995 GPZ 1100 PARTS LIST

## Crankshaft

| ITEM NAME                                   | PART NUMBER   | QUANTITY |
|---|---------------|----------|
| BOLT-FLANGED,8X25 (Ref # 130)               | 130G0825      | 1        |
| PIN-SPRING (Ref # 555)                      | 555A0412      | 1        |
| SPROCKET,21T (Ref # 12046)                  | 12046-1084    | 1        |
| CRANKSHAFT-COMP (Ref # 13031)               | 13031-1395    | 1        |
| ROD-ASSY-CONNECTING,K (Ref # 13251)         | 13251-1102-KK | 4        |
| ROD-ASSY-CONNECTING,L (Ref # 13251A)        | 13251-1102-LL | 4        |
| NUT,CONNECTING ROD (Ref # 92015)            | 92015-1559    | 8        |
| WASHER,8.5X36X4 (Ref # 92022)               | 92022-1633    | 1        |
| BUSHING,CRANKSHAFT,BLUE (Ref # 92028)       | 92028-1100    | AR       |
| BUSHING,CRANKSHAFT,BLACK (Ref # 92028A)     | 92028-1101    | AR       |
| BUSHING,CRANKSHAFT,BROWN (Ref # 92028B)     | 92028-1102    | AR       |
| BUSHING,CRANKSHAFT,BLUE (Ref # 92028C)      | 92028-1272    | AR       |
| BUSHING,CRANKSHAFT,BLACK (Ref # 92028D)     | 92028-1273    | AR       |
| BUSHING,CRANKSHAFT,BROWN (Ref # 92028E)     | 92028-1274    | AR       |
| BUSHING,CONNECTING ROD,BLACK (Ref # 92028F) | 92028-1679    | AR       |
| BUSHING,CONNECTING ROD,BLUE (Ref # 92028G)  | 92028-1680    | AR       |
| BUSHING,CONNECTING ROD,WHITE (Ref # 92028H) | 92028-1681    | AR       |
| CHAIN,GENERATOR (Ref # 92057)               | 92057-1209    | 1        |
| BOLT,CONNECTING ROD,9MM (Ref # 92150)       | 92150-1362    | 8        |