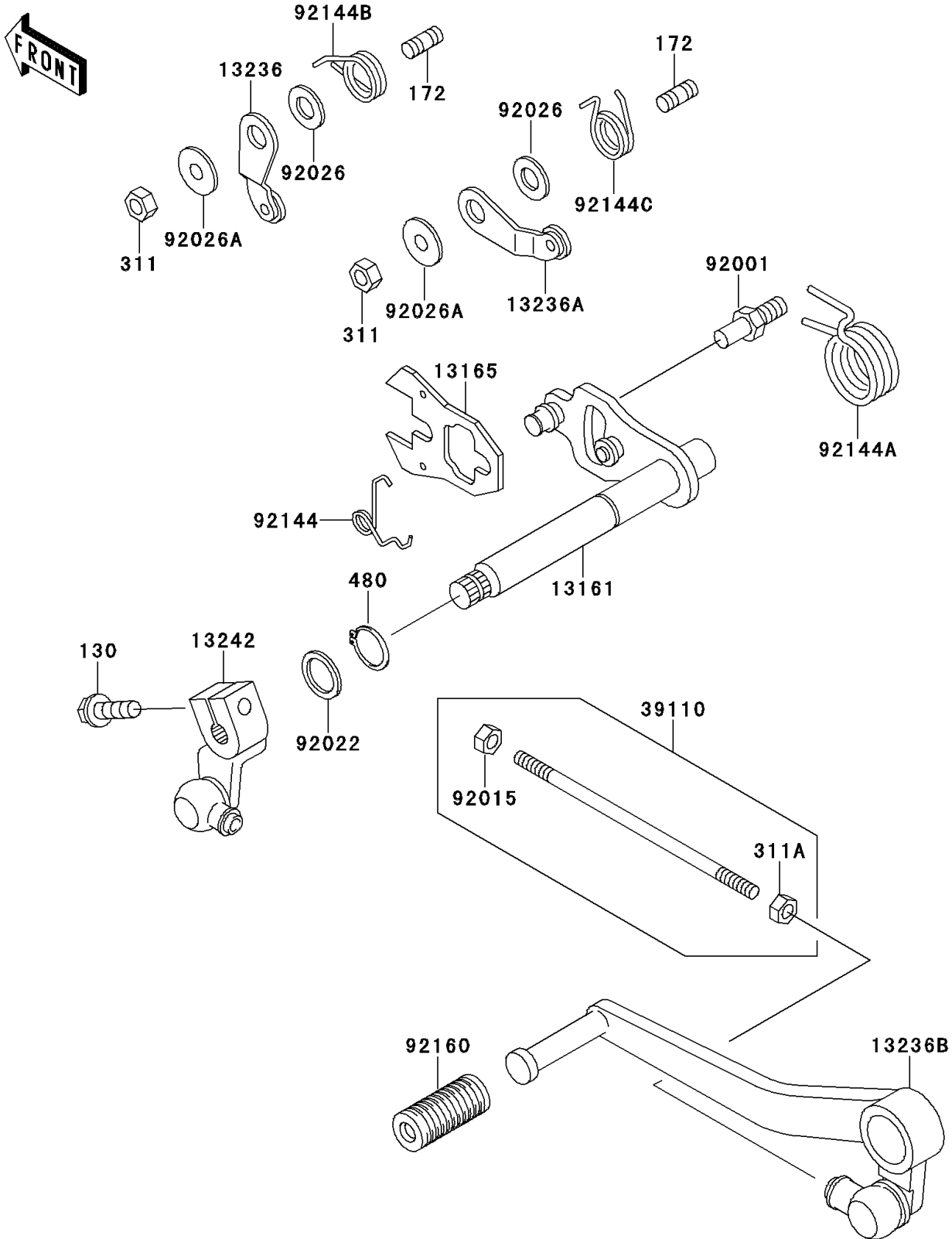


# 1996 GPZ 1100 PARTS DIAGRAM

Gear Change Mechanism

E1370



# 1996 GPZ 1100 PARTS LIST

## Gear Change Mechanism

ITEM NAME	PART NUMBER	QUANTITY
BOLT-FLANGED,6X20,BLACK (Ref # 130)	130S0620	1
BOLT-STUD,6X14 (Ref # 172)	172G0614	2
NUT-HEX,6MM (Ref # 311)	311G0600	2
NUT-HEX (Ref # 311A)	311J0600	1
CIRCLIP-TYPE-C,13MM (Ref # 480)	480J1300	1
LEVER-COMP-CHANGE SHAFT (Ref # 13161)	13161-1155	1
PAWL (Ref # 13165)	13165-1120	1
LEVER-COMP,GEAR POSITION (Ref # 13236)	13236-1103	1
LEVER-COMP,GEAR POSITION (Ref # 13236A)	13236-1216	1
LEVER-COMP,CHANGE PEDAL (Ref # 13236B)	13236-1270	1
LEVER-ASSY-CHANGE,LINK (Ref # 13242)	13242-1323	1
ROD-ASSY-TIE,CHANGE LEVER (Ref # 39110)	39110-1015	1
BOLT,RETURN SPRING (Ref # 92001)	92001-1455	1
NUT (Ref # 92015)	92015-1178	1
WASHER,13.3X18X1 (Ref # 92022)	92022-1772	1
SPACER,6.3X12X1.0 (Ref # 92026)	92026-094	2
SPACER (Ref # 92026A)	92026-1217	2
SPRING (Ref # 92144)	92144-1029	1
SPRING,CHANGE PEDAL RETURN (Ref # 92144A)	92144-1074	1
SPRING (Ref # 92144B)	92144-1856	1
SPRING,GEAR POSITION (Ref # 92144C)	92144-1857	1
DAMPER,CHANGE PEDAL (Ref # 92160)	92160-1036	1