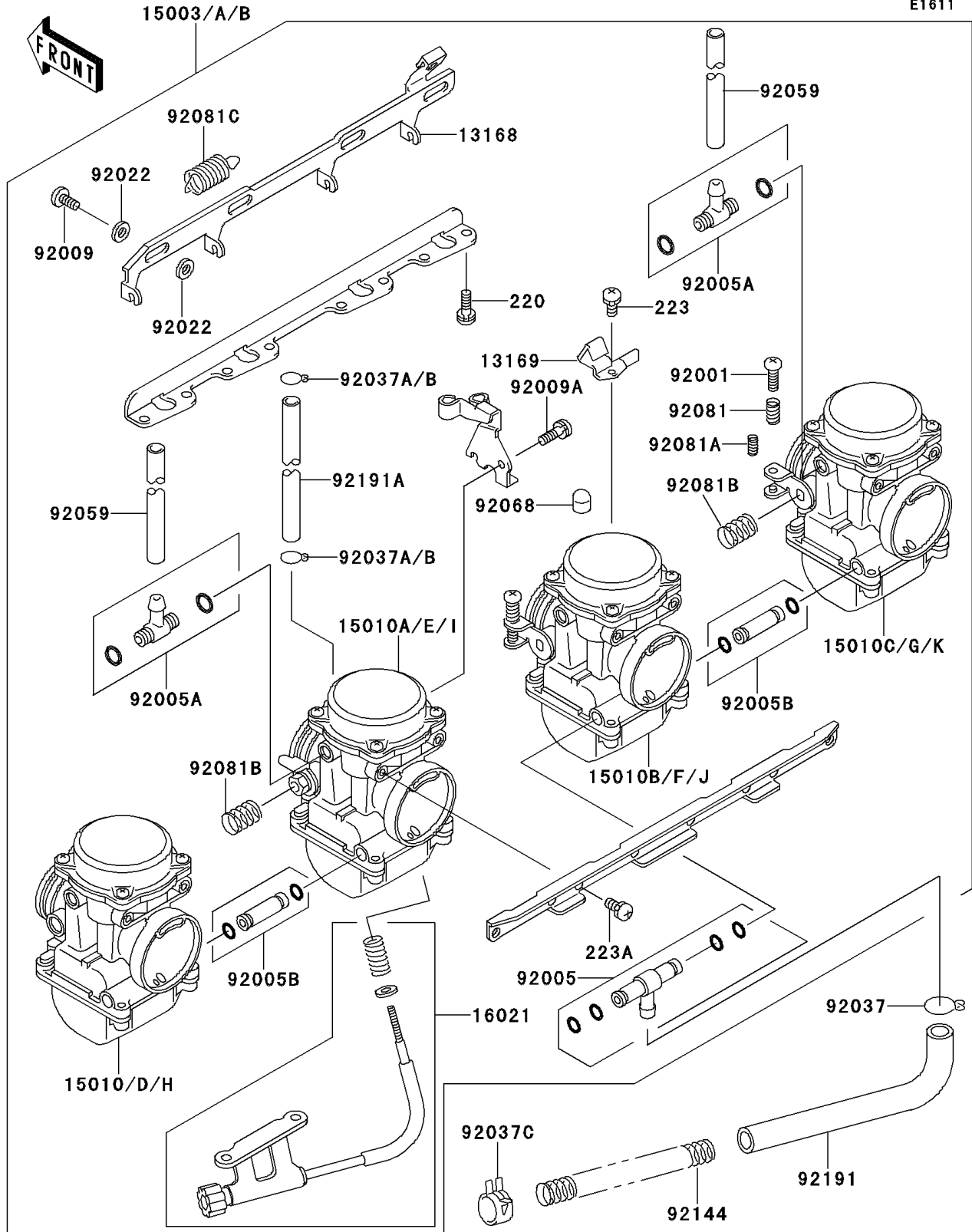


1995 GPZ 1100 PARTS DIAGRAM

Carburetor

E1611



1995 GPZ 1100 PARTS LIST

Carburetor

ITEM NAME	PART NUMBER	QUANTITY
LEVER,STARTER (Ref # 13168)	13168-1245	1
PLATE,STARTER CABLE (Ref # 13169)	13169-1871	1
SCREW-THROTTLE STOP (Ref # 16021)	16021-1204	1
BOLT,THROTTLE ADJUST (Ref # 92001)	92001-1998	3
FITTING (Ref # 92005)	92005-1288	1
FITTING (Ref # 92005A)	92005-1306	2
FITTING (Ref # 92005B)	92005-1310	2
SCREW (Ref # 92009)	92009-1262	3
SCREW,5X10 (Ref # 92009A)	92009-1365	1
WASHER,6.1X11X0.8,POLYACETAL (Ref # 92022)	92022-1199	6
CLAMP,HOSE (Ref # 92037)	92037-1104	1
SCREW-PAN-CROS,6X16 (Ref # 220)	220B0616	8
SCREW-PAN-WS-CROS (Ref # 223)	223C0420	1
SCREW-PAN-WS-CROS (Ref # 223A)	223C0510	8
CLAMP (Ref # 92037C)	92037-1861	1
TUBE,6.5X9.5X350 (Ref # 92059)	92059-1237	2
PLUG,12X25 (Ref # 92068)	92068-006	1
SPRING,THROTTLE ADJUST UPP (Ref # 92081)	92081-1620	3
SPRING,THROTTLE ADJUST LWR (Ref # 92081A)	92081-1621	3
SPRING,THROTTLE ADJUST CNT (Ref # 92081B)	92081-1622	2
SPRING,STARTER LEVER (Ref # 92081C)	92081-1762	1
SPRING,FUEL TUBE (Ref # 92144)	92144-1874	1
TUBE,FUEL (Ref # 92191)	92191-1007	1
TUBE (Ref # 92191A)	92191-1017	1
CARBURETOR-ASSY (Ref # 15003)	15003-1122	1
CARBURETOR-ASSY (Ref # 15003A)	15003-1129	1
CARBURETOR-ASSY (Ref # 15003B)	15003-1130	1
CARBURETOR,LH,OUTSIDE (Ref # 15010)	15010-1909	1
CARBURETOR,LH,INSIDE (Ref # 15010A)	15010-1910	1

1995 GPZ 1100 PARTS LIST

Carburetor

ITEM NAME	PART NUMBER	QUANTITY
CARBURETOR,RH,INSIDE (Ref # 15010B)	15010-1911	1
CARBURETOR,RH,OUTSIDE (Ref # 15010C)	15010-1912	1
CARBURETOR,LH,OUTSIDE (Ref # 15010D)	15010-1917	1
CARBURETOR,LH,INSIDE (Ref # 15010E)	15010-1918	1
CARBURETOR,RH,INSIDE (Ref # 15010F)	15010-1919	1
CARBURETOR,RH,OUTSIDE (Ref # 15010G)	15010-1920	1
CARBURETOR,LH,OUTSIDE (Ref # 15010H)	15010-1921	1
CARBURETOR,LH,INSIDE (Ref # 15010I)	15010-1922	1
CARBURETOR,RH,INSIDE (Ref # 15010J)	15010-1923	1
CARBURETOR,RH,OUTSIDE (Ref # 15010K)	15010-1924	1
CLAMP,TUBE (Ref # 92037A)	92037-1201	2
CLAMP,TUBE (Ref # 92037B)	92037-1477	2