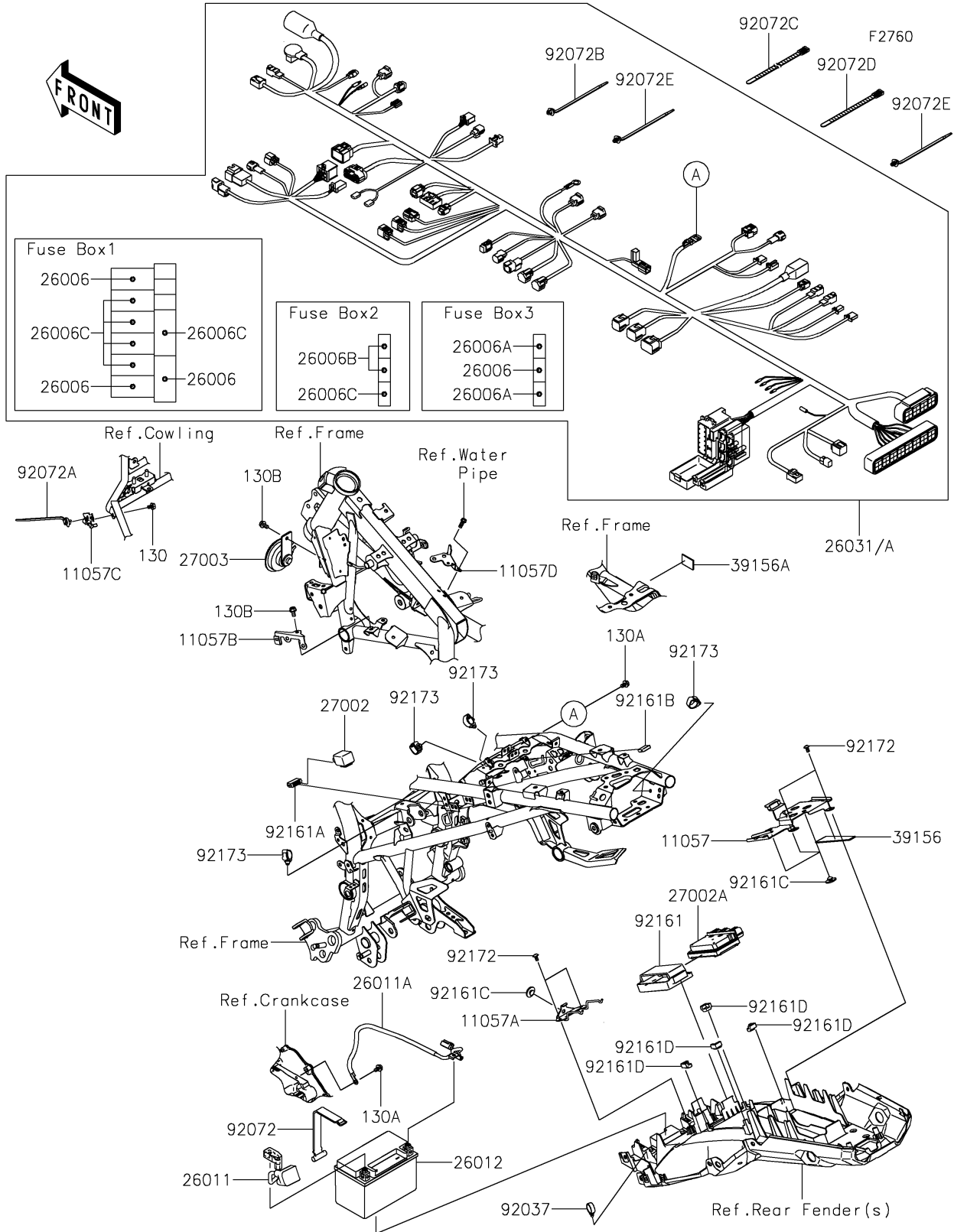


# 2023 Versys-X 300 ABS PARTS DIAGRAM

## Chassis Electrical Equipment



## 2023 Versys-X 300 ABS PARTS LIST

### Chassis Electrical Equipment

ITEM NAME	PART NUMBER	QUANTITY
BRACKET,ECU,UPP (Ref # 11057)	11057-0558	1
BRACKET,RR FENDER (Ref # 11057A)	11057-0559	1
BRACKET,FRM PIPE,LH (Ref # 11057B)	11057-0566	1
BRACKET,RELAY (Ref # 11057C)	11057-0703	1
BRACKET,FRM PIPE,RH (Ref # 11057D)	11057-1220	1
FUSE,MINI BLADE,15A,BLUE (Ref # 26006)	26006-0001	4
FUSE,MINI BLADE,25A,NATURAL (Ref # 26006A)	26006-0020	2
FUSE,MINI BLADE,5A,TAN (Ref # 26006B)	26006-1077	2
FUSE,MINI BLADE,10A,RED (Ref # 26006C)	26006-1078	6
WIRE-LEAD,BATTERY(+) (Ref # 26011)	26011-0959	1
WIRE-LEAD,BATTERY(-) (Ref # 26011A)	26011-1886	1
BATTERY,FTX9-BS,12V 8AH (Ref # 26012)	26012-0608	1
HARNESS,MAIN (Ref # 26031)	26031-2640	1
HARNESS,MAIN (Ref # 26031A)	26031-2642	1
RELAY-ASSY,SIGNAL LAMP (Ref # 27002)	27002-0006	1
RELAY-ASSY (Ref # 27002A)	27002-0050	1
HORN (Ref # 27003)	27003-0124	1
PAD,28X112X2 (Ref # 39156)	39156-2145	1
PAD,31X23X2 (Ref # 39156A)	39156-2462	1
CLAMP,HOSE (Ref # 92037)	92037-1827	1
BAND (Ref # 92072)	92072-0749	1
BAND (Ref # 92072A)	92072-0807	1
BAND,POP-2763 (Ref # 92072B)	92072-0813	11
BAND,L=250 (Ref # 92072C)	92072-0937	1
BAND,L=140 (Ref # 92072D)	92072-1293	6
BAND,OS170-FT7(BLACK) (Ref # 92072E)	92072-1414	12
DAMPER,RELAY BOX (Ref # 92161)	92161-0203	1
DAMPER,15X25X8.5 (Ref # 92161A)	92161-1443	1
DAMPER,15X21X5.5 (Ref # 92161B)	92161-1472	1

## 2023 Versys-X 300 ABS PARTS LIST

### Chassis Electrical Equipment

ITEM NAME	PART NUMBER	QUANTITY
DAMPER,8X22X10 (Ref # 92161C)	92161-1685	4
DAMPER,ECU CORNER (Ref # 92161D)	92161-1909	4
SCREW,TAPPING,5X10 (Ref # 92172)	92172-0262	4
CLAMP,HOLDER CLIP (Ref # 92173)	92173-0868	4
BOLT-FLANGED,6X8 (Ref # 130)	130BA0608	1
BOLT-FLANGED,6X10 (Ref # 130A)	130BA0610	2
BOLT-FLANGED,6X12 (Ref # 130B)	130BA0612	2
BAND,OS170-FT7(BLACK) (Ref # 92072E)	92072-1414	11