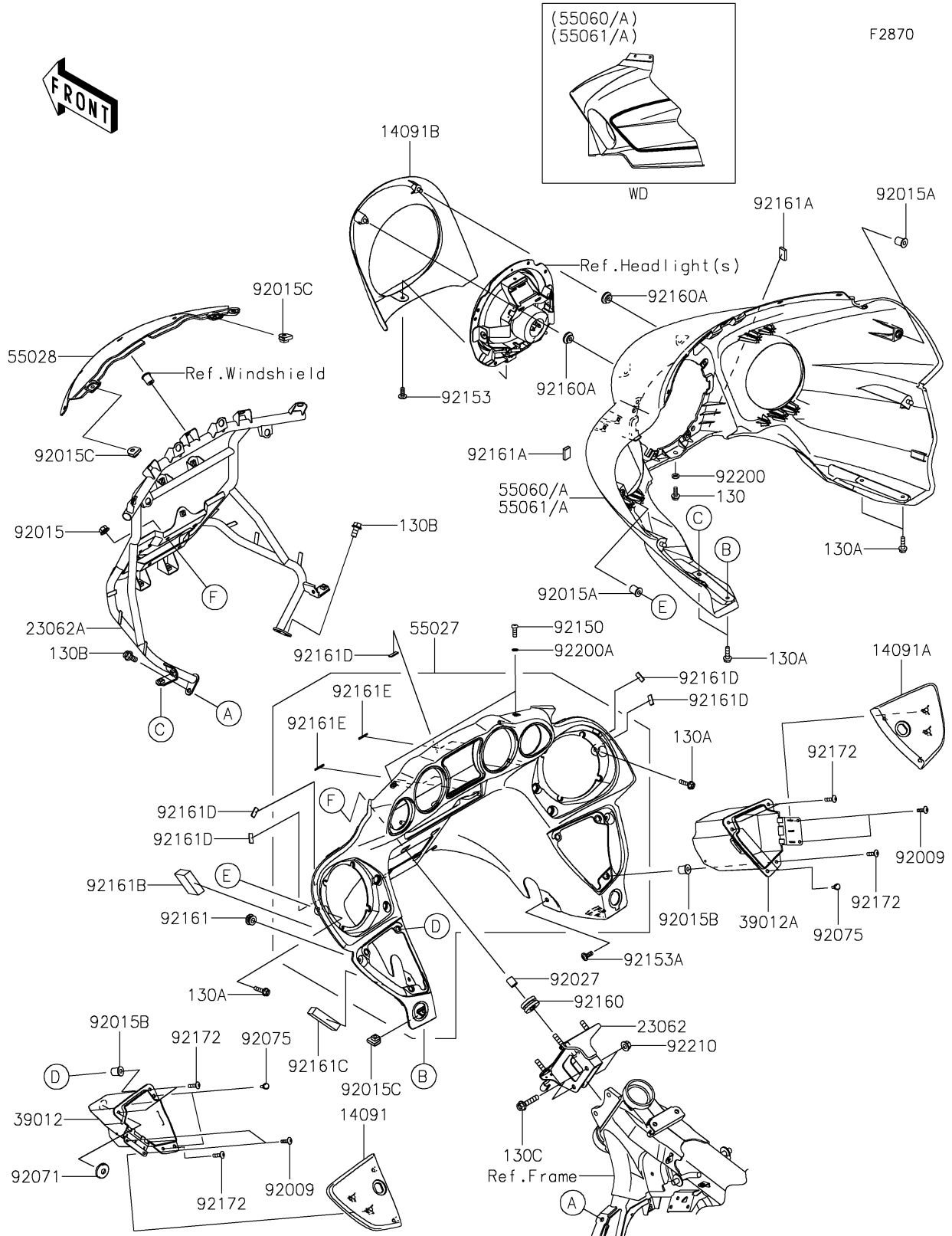


2023 Vulcan® 1700 Voyager ABS PARTS DIAGRAM

Cowling



2023 Vulcan® 1700 Voyager ABS PARTS LIST

Cowling

ITEM NAME	PART NUMBER	QUANTITY
COVER,STORAGE CASE,LH,F.BLACK (Ref # 14091)	14091-0946-6Z	1
COVER,STORAGE CASE,RH,F.BLACK (Ref # 14091A)	14091-0947-6Z	1
COVER,HEAD LAMP (Ref # 14091B)	14091-0948	1
BRACKET-COMP,HEAD PIPE (Ref # 23062)	23062-0106	1
BRACKET-COMP,COWLING (Ref # 23062A)	23062-0720	1
CASE-STORAGE,LH (Ref # 39012)	39012-0027	1
CASE-STORAGE,RH (Ref # 39012A)	39012-0028	1
COWLING-ASSY,UPP,INNER,BLACK (Ref # 55027)	55027-0063-6Z	1
COWLING,CNT,F.BLACK (Ref # 55028)	55028-0227-6Z	1
COWLING,UPP,OUTER,P.N.TEAL+WHT (Ref # 55060)	55060-5091-68V	1
COWLING,UPP,OUTER,P.S.GRAY+EBY (Ref # 55060A)	55060-5388-60W	1
SCREW,TAPPING,5X10 (Ref # 92009)	92009-1332	4
NUT,FLANGED,8MM (Ref # 92015)	92015-1406	4
NUT (Ref # 92015A)	92015-1700	2
NUT,WELL,5MM (Ref # 92015B)	92015-1757	6
NUT,CLIP,6MM (Ref # 92015C)	92015-1904	4
COLLAR,8.8X12X14 (Ref # 92027)	92027-012	4
GROMMET,TAIL LAMP WIRE (Ref # 92071)	92071-079	1
DAMPER,6X10X15 (Ref # 92075)	92075-1808	4
BOLT,SOCKET,6X18 (Ref # 92150)	92150-1553	2
BOLT,SOCKET,6X16 (Ref # 92153)	92153-0817	1
BOLT,SOCKET,6X15 (Ref # 92153A)	92153-1451	2
DAMPER (Ref # 92160)	92160-1007	4
DAMPER (Ref # 92160A)	92160-1613	2
DAMPER (Ref # 92161)	92161-0317	2
DAMPER (Ref # 92161A)	92161-0717	2
DAMPER (Ref # 92161B)	92161-0784	2
DAMPER (Ref # 92161C)	92161-0785	2
DAMPER (Ref # 92161D)	92161-0965	5

2023 Vulcan® 1700 Voyager ABS PARTS LIST

Cowling

ITEM NAME	PART NUMBER	QUANTITY
DAMPER,3X25X0.3 (Ref # 92161E)	92161-0996	4
SCREW,5X18 (Ref # 92172)	92172-0428	6
WASHER,6.5X12X2 (Ref # 92200)	92200-0511	1
WASHER,6.2X10X1 (Ref # 92200A)	92200-1465	2
NUT,FLANGED,8MM (Ref # 92210)	92210-0004	2
BOLT-FLANGED,6X16 (Ref # 130)	130AA0616	1
BOLT-FLANGED,6X22 (Ref # 130A)	130BB0622	6
BOLT-FLANGED,8X16 (Ref # 130B)	130BB0816	2
BOLT-FLANGED,8X35 (Ref # 130C)	130BB0835	2