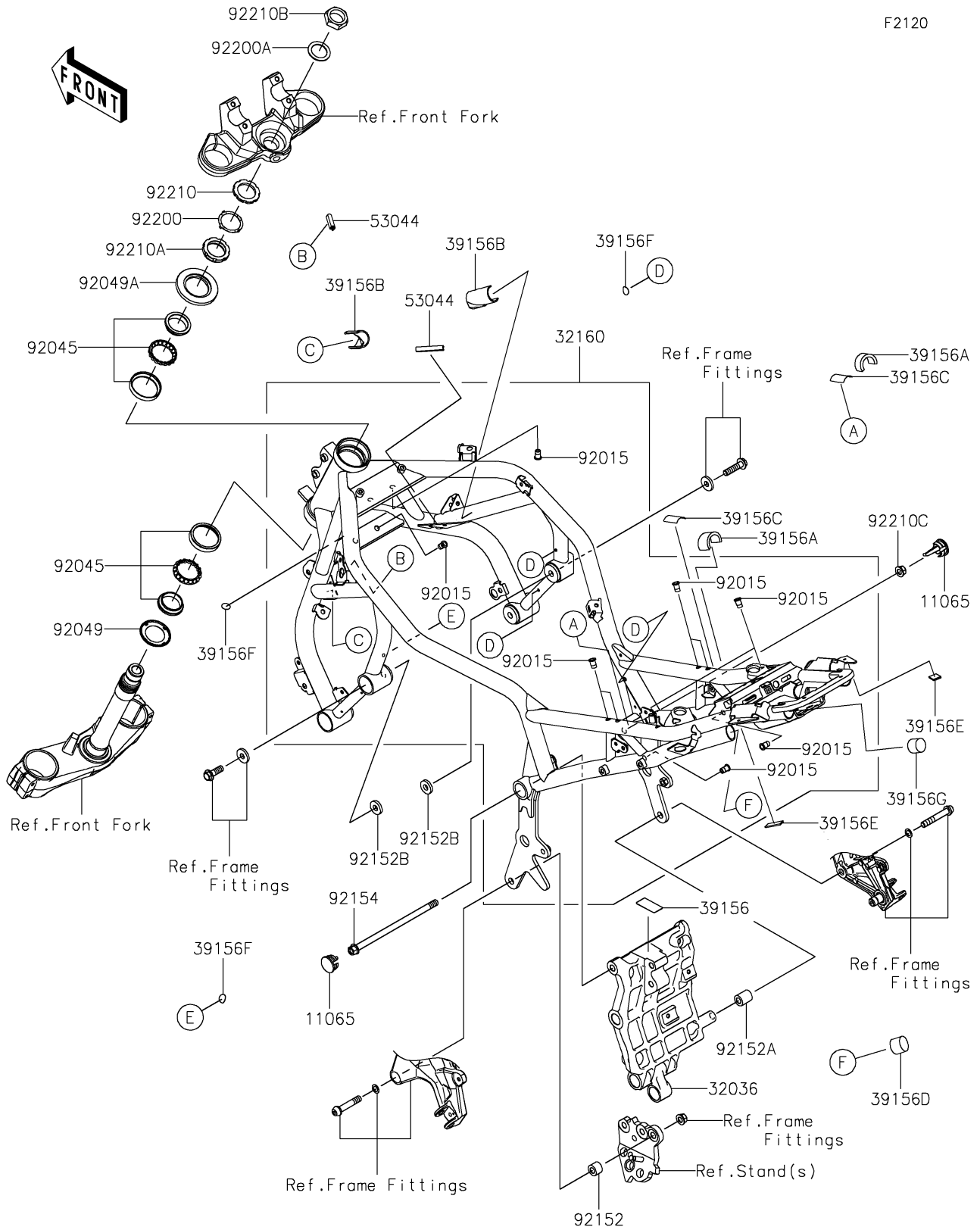


2024 Z H2 SE ABS PARTS DIAGRAM

Frame



2024 Z H2 SE ABS PARTS LIST

Frame

ITEM NAME	PART NUMBER	QUANTITY
CAP,27.4MM (Ref # 11065)	11065-0987	2
BRACKET-SWINGARM,M.F.S.BLACK (Ref # 32036)	32036-0406-46R	1
FRAME-COMP,G.B.GREEN (Ref # 32160)	32160-1914-46Y	1
PAD,22X45 (Ref # 39156)	39156-1896	1
PAD,20X50X5 (Ref # 39156A)	39156-2191	2
PAD,50X50X2 (Ref # 39156B)	39156-2235	2
PAD,35X25X0.2 (Ref # 39156C)	39156-2449	2
PAD,27X20 (Ref # 39156D)	39156-2500	2
PAD,30X14X2 (Ref # 39156E)	39156-2568	2
PAD (Ref # 39156F)	39156-2747	6
PAD,24.2X20 (Ref # 39156G)	39156-2777	2
TRIM,L=48 (Ref # 53044)	53044-1324	2
NUT,POP,6MM,L=15 (Ref # 92015)	92015-1791	12
BEARING-BALL,SF07A17PX1V1 (Ref # 92045)	92045-1384	2
SEAL-OIL,DS35X55X4 (Ref # 92049)	92049-0022	1
SEAL-OIL,XMH 43 75 6.4J (Ref # 92049A)	92049-1382	1
COLLAR,10.2X20X14.7 (Ref # 92152)	92152-2642	1
COLLAR,10.2X20X23.7 (Ref # 92152A)	92152-2643	1
COLLAR,10.5X25X4.5 (Ref # 92152B)	92152-2644	2
BOLT,FLANGED,10X200 (Ref # 92154)	92154-1660	1
WASHER (Ref # 92200)	92200-0036	1
WASHER,28.5X40X1.6 (Ref # 92200A)	92200-0595	1
NUT,35MM (Ref # 92210)	92210-0095	1
NUT,35MM (Ref # 92210A)	92210-0096	1
NUT,28MM (Ref # 92210B)	92210-0209	1
NUT,LOCK,FLANGED,10MM (Ref # 92210C)	92210-1139	1