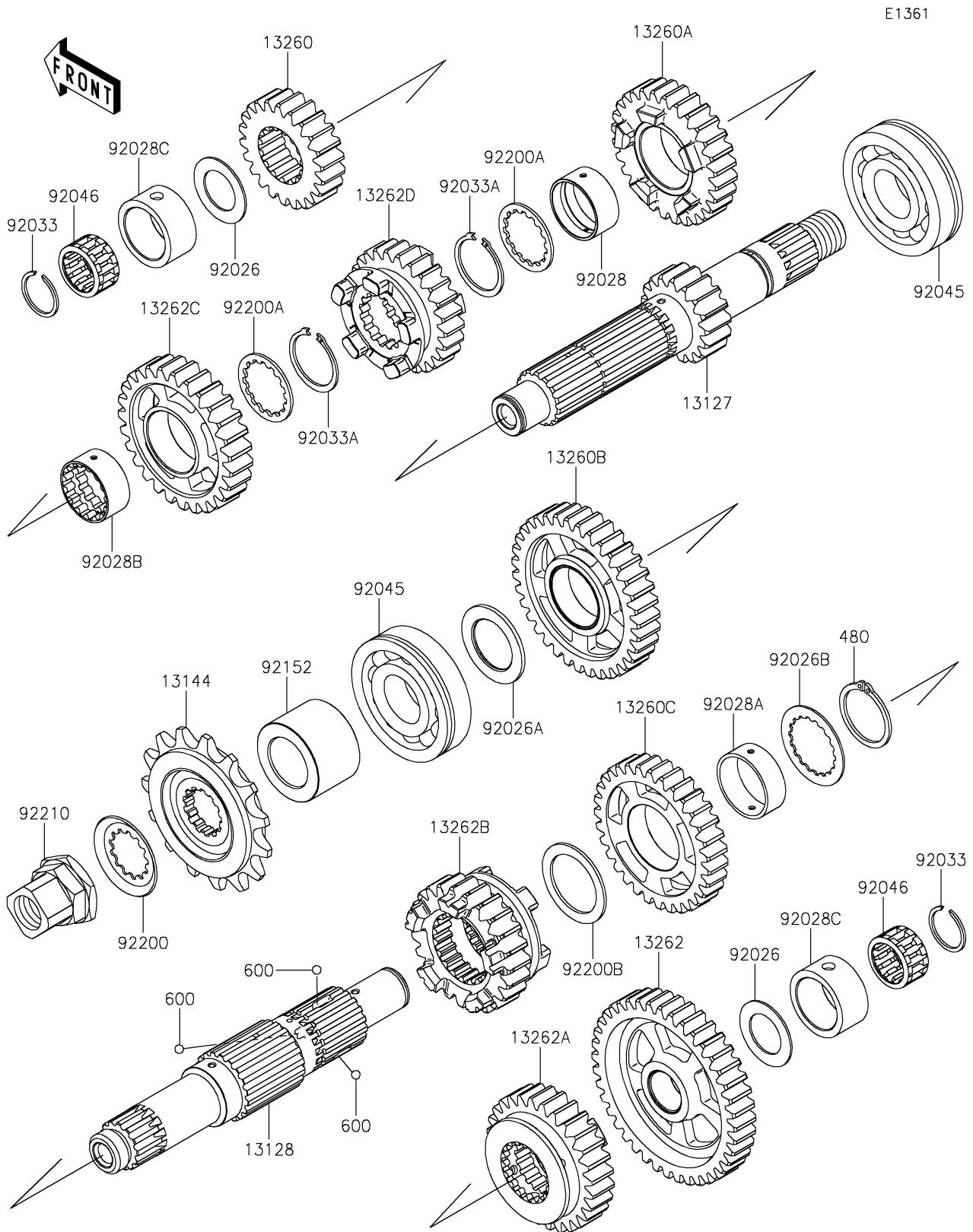


2022 W800 PARTS DIAGRAM

Transmission



2022 W800 PARTS LIST

Transmission

ITEM NAME	PART NUMBER	QUANTITY
SHAFT-TRANSMISSION INPUT (Ref # 13127)	13127-0087	1
SHAFT-TRANSMISSION OUTPUT (Ref # 13128)	13128-0063	1
SPROCKET-OUTPUT,15T (Ref # 13144)	13144-0554	1
GEAR,INPUT 2ND,22T (Ref # 13260)	13260-1783	1
GEAR,INPUT 4TH,28T (Ref # 13260A)	13260-1785	1
GEAR,OUTPUT 2ND,35T (Ref # 13260B)	13260-1788	1
GEAR,OUTPUT 3RD,31T (Ref # 13260C)	13260-1789	1
GEAR,OUTPUT LOW,40T (Ref # 13262)	13262-0843	1
GEAR,OUTPUT 4TH,28T (Ref # 13262A)	13262-0845	1
GEAR,OUTPUT TOP,23T (Ref # 13262B)	13262-0846	1
GEAR,INPUT 5TH,27T (Ref # 13262C)	13262-1385	1
GEAR,INPUT 3RD,25T (Ref # 13262D)	13262-1458	1
SPACER,20.5X33X1.0 (Ref # 92026)	92026-1528	2
SPACER,25.3X39X2.0 (Ref # 92026A)	92026-1529	1
SPACER,TOOTHED,28X30X2.0 (Ref # 92026B)	92026-1530	1
BUSHING,INPUT GEAR (Ref # 92028)	92028-1449	1
BUSHING,OUTPUT GEAR (Ref # 92028A)	92028-1707	1
BUSHING,INPUT TOP GEAR (Ref # 92028B)	92028-1752	1
BUSHING,26X34X16.6 (Ref # 92028C)	92028-180	2
RING-SNAP,20MM (Ref # 92033)	92033-015	2
RING-SNAP,25.9X30.6X1.2 (Ref # 92033A)	92033-1037	2
BEARING-BALL,6305N2SH2 (Ref # 92045)	92045-1224	2
BEARING-NEEDLE,KMJ20X26X13.8X1 (Ref # 92046)	92046-1185	2
COLLAR,SPROCKET (Ref # 92152)	92152-1148	1
WASHER (Ref # 92200)	92200-0863	1
WASHER,28.5X34.0X1.5 (Ref # 92200A)	92200-1240	2
WASHER,29.9X40X1.5 (Ref # 92200B)	92200-1278	1
NUT,SPROCKET (Ref # 92210)	92210-1098	1
CIRCLIP (Ref # 480)	480J2900	1

2022 W800 PARTS LIST

Transmission

ITEM NAME	PART NUMBER	QUANTITY
BALL-STEEL,5/32 (Ref # 600)	600A0500	3