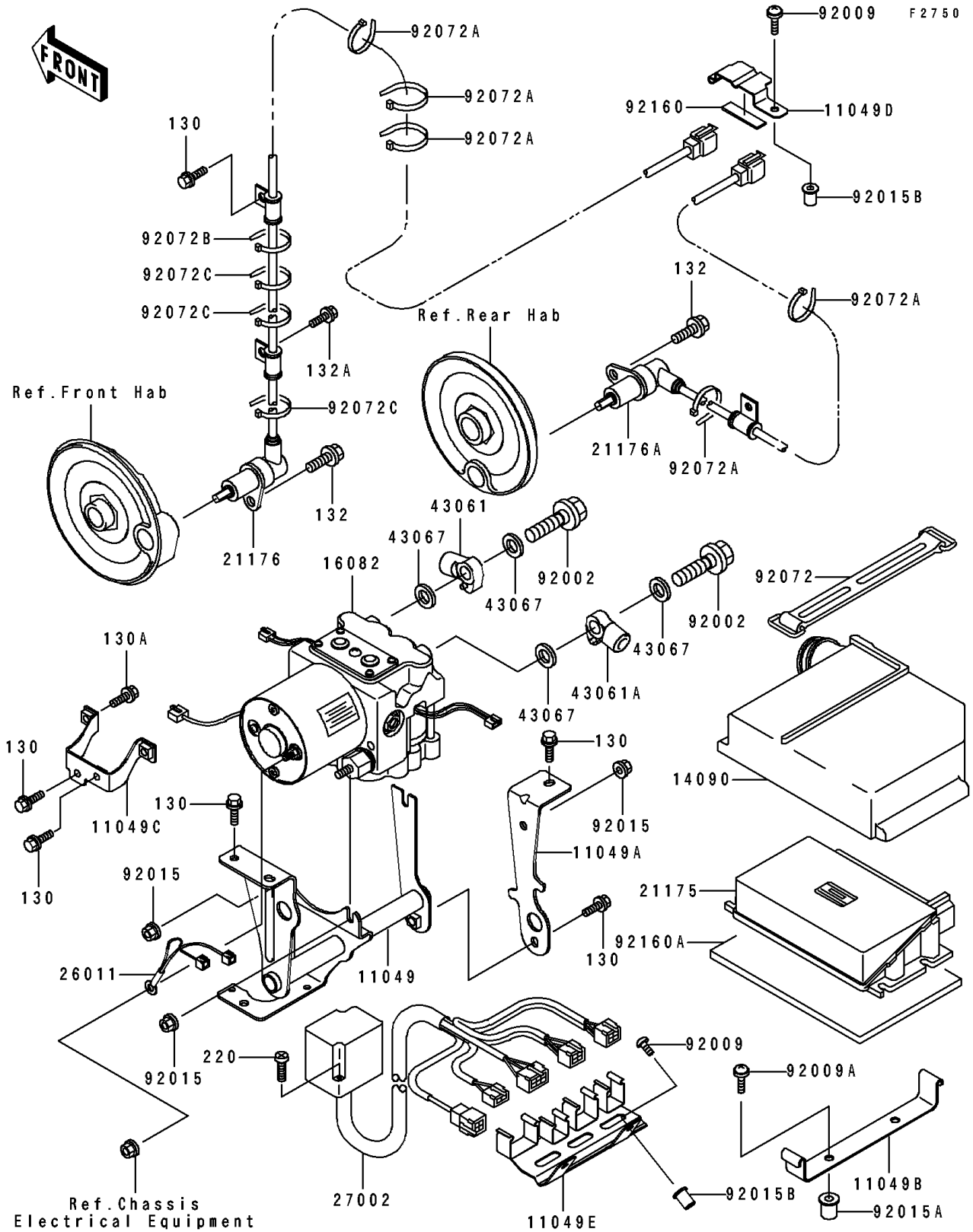


# 1996 GPZ 1100 ABS PARTS DIAGRAM

Other



# 1996 GPZ 1100 ABS PARTS LIST

## Other

| ITEM NAME                             | PART NUMBER | QUANTITY |
|---------------------------------------|-------------|----------|
| BRACKET,OIL PUMP,LH (Ref # 11049)     | 11049-1289  | 1        |
| BRACKET,OIL PUMP,RH (Ref # 11049A)    | 11049-1290  | 1        |
| BRACKET,E.CONTROL UNIT (Ref # 11049B) | 11049-1291  | 1        |
| BRACKET,FUSE (Ref # 11049C)           | 11049-1321  | 1        |
| BRACKET,SENSOR (Ref # 11049D)         | 11049-1441  | 1        |
| BRACKET,CONNECTOR (Ref # 11049E)      | 11049-1442  | 1        |
| COVER,E.CONTROL UNIT (Ref # 14090)    | 14090-1627  | 1        |
| PUMP-ASSY-OIL (Ref # 16082)           | 16082-1141  | 1        |
| CONTROL UNIT-ELECTRONIC (Ref # 21175) | 21175-1060  | 1        |
| SENSOR,FR (Ref # 21176)               | 21176-1071  | 1        |
| SENSOR,RR (Ref # 21176A)              | 21176-1072  | 1        |
| WIRE-LEAD,(-) (Ref # 26011)           | 26011-1645  | 1        |
| RELAY-ASSY (Ref # 27002)              | 27002-1094  | 1        |
| JOINT-BRAKE,OIL PUMP (Ref # 43061)    | 43061-1074  | 1        |
| JOINT-BRAKE,OIL PUMP (Ref # 43061A)   | 43061-1075  | 1        |
| WASHER,10.5X15X1.5 (Ref # 43067)      | 43067-001   | 4        |
| BOLT,OIL,L=23 (Ref # 92002)           | 92002-1888  | 2        |
| SCREW,5X14,WHITE (Ref # 92009)        | 92009-1366  | 3        |
| SCREW,6X16 (Ref # 92009A)             | 92009-1621  | 2        |
| NUT,FLANGED,6MM (Ref # 92015)         | 92015-1367  | 3        |
| NUT (Ref # 92015A)                    | 92015-1700  | 2        |
| NUT,WELL,5MM (Ref # 92015B)           | 92015-1757  | 3        |
| BAND,L=146.9 (Ref # 92072)            | 92072-054   | 1        |
| BAND,L=185 (Ref # 92072A)             | 92072-1195  | 5        |
| BAND,L=365 (Ref # 92072B)             | 92072-1197  | 1        |
| BAND,L=100 (Ref # 92072C)             | 92072-1250  | 3        |
| DAMPER (Ref # 92160)                  | 92160-1099  | 1        |
| DAMPER,E.CONTROL UNIT (Ref # 92160A)  | 92160-1647  | 1        |
| BOLT-FLANGED (Ref # 130)              | 130J0610    | 7        |

# 1996 GPZ 1100 ABS PARTS LIST

Other

| ITEM NAME                            | PART NUMBER | QUANTITY |
|--------------------------------------|-------------|----------|
| BOLT-FLANGED,6X14,BLACK (Ref # 130A) | 130J0614    | 2        |
| BOLT-FLANGED-SMALL,8X16 (Ref # 132)  | 132E0816    | 2        |
| BOLT-FLANGED-SMALL (Ref # 132A)      | 132J0612    | 1        |
| SCREW-PAN-CROS (Ref # 220)           | 220C0430    | 2        |