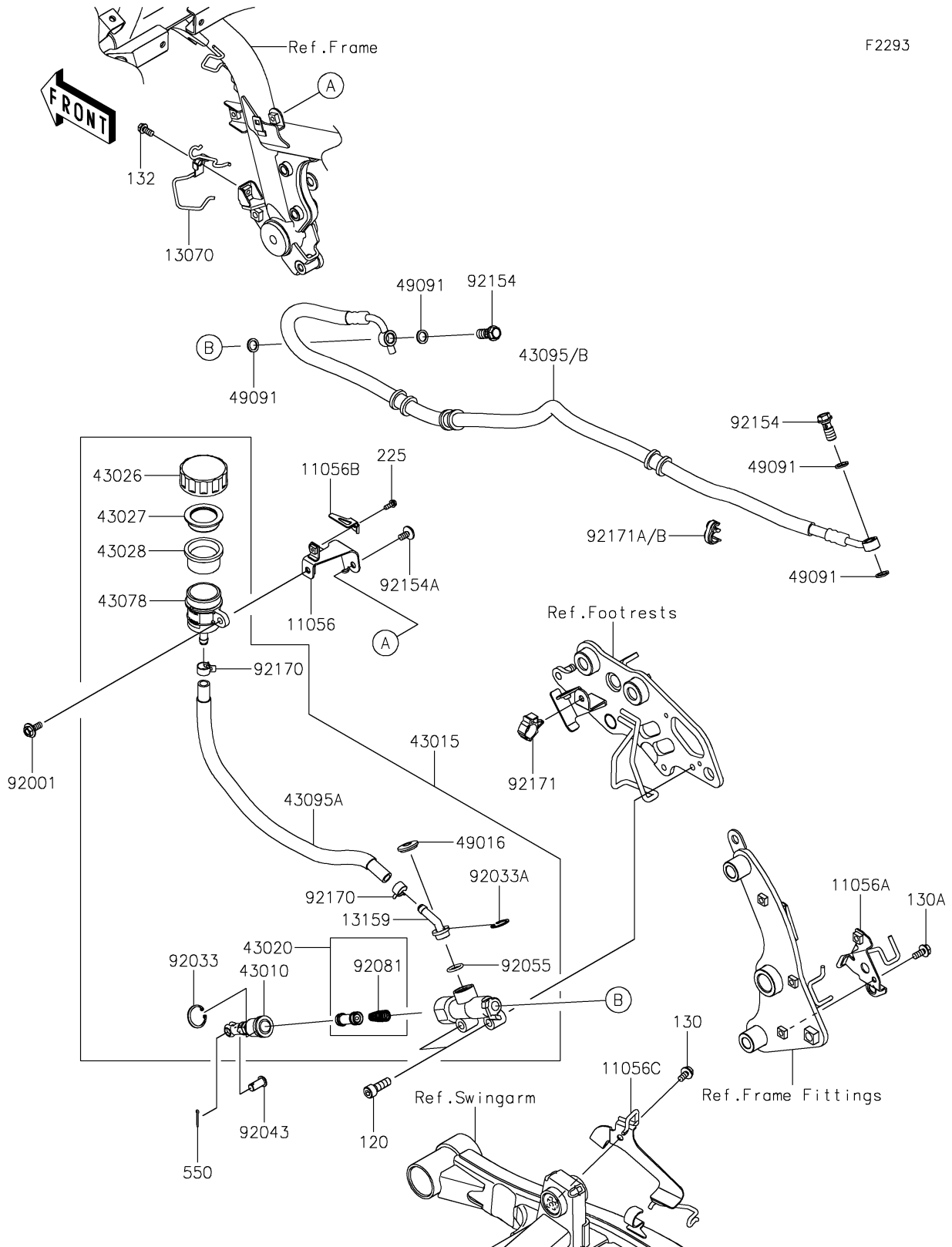


2025 Vulcan S PARTS DIAGRAM

Rear Master Cylinder

F2293



2025 Vulcan S PARTS LIST

Rear Master Cylinder

ITEM NAME	PART NUMBER	QUANTITY
BRACKET,RESERVOIR (Ref # 11056)	11056-4104	1
BRACKET,SWINGARM BKT. (Ref # 11056A)	11056-4107	1
BRACKET,TAMPERPROOF (Ref # 11056B)	11056-4117	1
BRACKET,SWINGARM,RH (Ref # 11056C)	11056-4444	1
GUIDE,RR M/CYL. HOSE (Ref # 13070)	13070-0779	1
CONNECTOR (Ref # 13159)	13159-0008	1
ROD-ASSY-BRAKE (Ref # 43010)	43010-0016	1
CYLINDER-ASSY-MASTER,RR (Ref # 43015)	43015-0607	1
PISTON-COMP-BRAKE (Ref # 43020)	43020-1057	1
CAP-BRAKE (Ref # 43026)	43026-0009	1
PLATE-DIAPHRAGM (Ref # 43027)	43027-1053	1
DIAPHRAGM (Ref # 43028)	43028-1065	1
RESERVOIR (Ref # 43078)	43078-0040	1
HOSE-BRAKE (Ref # 43095A)	43095-0859	1
HOSE-BRAKE,RR,1189MM (Ref # 43095B)	43095-1922	1
COVER-SEAL (Ref # 49016)	49016-1147	1
WASHER-SEAL,10.1X14.5X1.5 (Ref # 49091)	49091-0001	4
BOLT,W/P,6X16 (Ref # 92001)	92001-1860	1
RING-SNAP,20.9X24.6X1.2 (Ref # 92033)	92033-0079	1
RING-SNAP,20.5MM (Ref # 92033A)	92033-1186	1
PIN (Ref # 92043)	92043-0182	1
RING-O,14.8X2.4 (Ref # 92055)	92055-0741	1
SPRING,MASTER CYLINDER (Ref # 92081)	92081-1737	1
BOLT,FLANGED,10X23 (Ref # 92154)	92154-0732	2
BOLT,SOCKET,6X12 (Ref # 92154A)	92154-0951	1
CLAMP,HOSE (Ref # 92170)	92170-1091	2
CLAMP,BRAKE HOSE (Ref # 92171)	92171-0316	1
CLAMP,BRAKE HOSE (Ref # 92171B)	92171-1819	1
BOLT-SOCKET,8X25 (Ref # 120)	120CB0825	2

2025 Vulcan S PARTS LIST

Rear Master Cylinder

ITEM NAME	PART NUMBER	QUANTITY
BOLT-FLANGED,6X12 (Ref # 130)	130BA0612	1
BOLT-FLANGED,6X14 (Ref # 130A)	130BA0614	1
BOLT-FLANGED-SMALL,6X12 (Ref # 132)	132BB0612	1
SCREW-PAN-WSP-CROS,4X12 (Ref # 225)	225AB0412	1
PIN-COTTER,2.0X15 (Ref # 550)	550AA2015	1