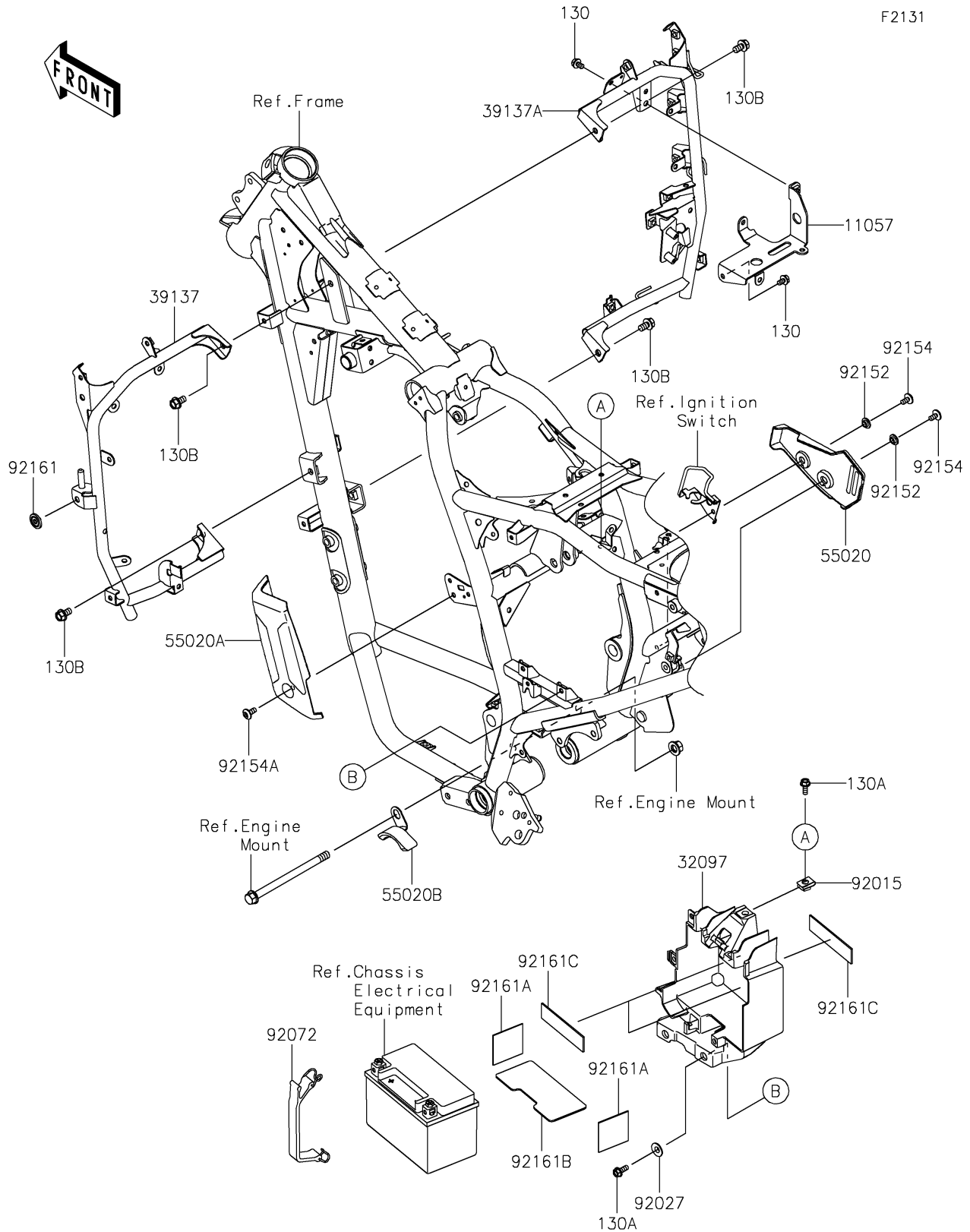


# 2023 KLR® 650 S PARTS DIAGRAM

## Frame Fittings



## 2023 KLR® 650 S PARTS LIST

### Frame Fittings

| ITEM NAME                        | PART NUMBER | QUANTITY |
|----------------------------------|-------------|----------|
| BRACKET,ABS UNIT (Ref # 11057)   | 11057-7886  | 1        |
| CASE-BATTERY (Ref # 32097)       | 32097-0565  | 1        |
| STAY-COMP,LH (Ref # 39137)       | 39137-0710  | 1        |
| STAY-COMP,RH (Ref # 39137A)      | 39137-0711  | 1        |
| GUARD,HEEL (Ref # 55020)         | 55020-2330  | 1        |
| GUARD (Ref # 55020A)             | 55020-2335  | 1        |
| GUARD,CHAIN (Ref # 55020B)       | 55020-2390  | 1        |
| NUT,6MM (Ref # 92015)            | 92015-1671  | 1        |
| COLLAR (Ref # 92027)             | 92027-1794  | 2        |
| BAND,BATTERY (Ref # 92072)       | 92072-0839  | 1        |
| COLLAR,6.3X9.5X4.1 (Ref # 92152) | 92152-1571  | 2        |
| BOLT,SOCKET,6X12 (Ref # 92154)   | 92154-2706  | 2        |
| BOLT,SOCKET,6X14 (Ref # 92154A)  | 92154-4285  | 1        |
| DAMPER,8X22X10 (Ref # 92161)     | 92161-1685  | 1        |
| DAMPER,60X140X1 (Ref # 92161A)   | 92161-1868  | 2        |
| DAMPER,BATTERY (Ref # 92161B)    | 92161-2353  | 1        |
| DAMPER,25X100X2 (Ref # 92161C)   | 92161-2354  | 3        |
| BOLT-FLANGED,6X10 (Ref # 130)    | 130BA0610   | 2        |
| BOLT-FLANGED,6X16 (Ref # 130A)   | 130BA0616   | 3        |
| BOLT-FLANGED,8X14 (Ref # 130B)   | 130BA0814   | 4        |