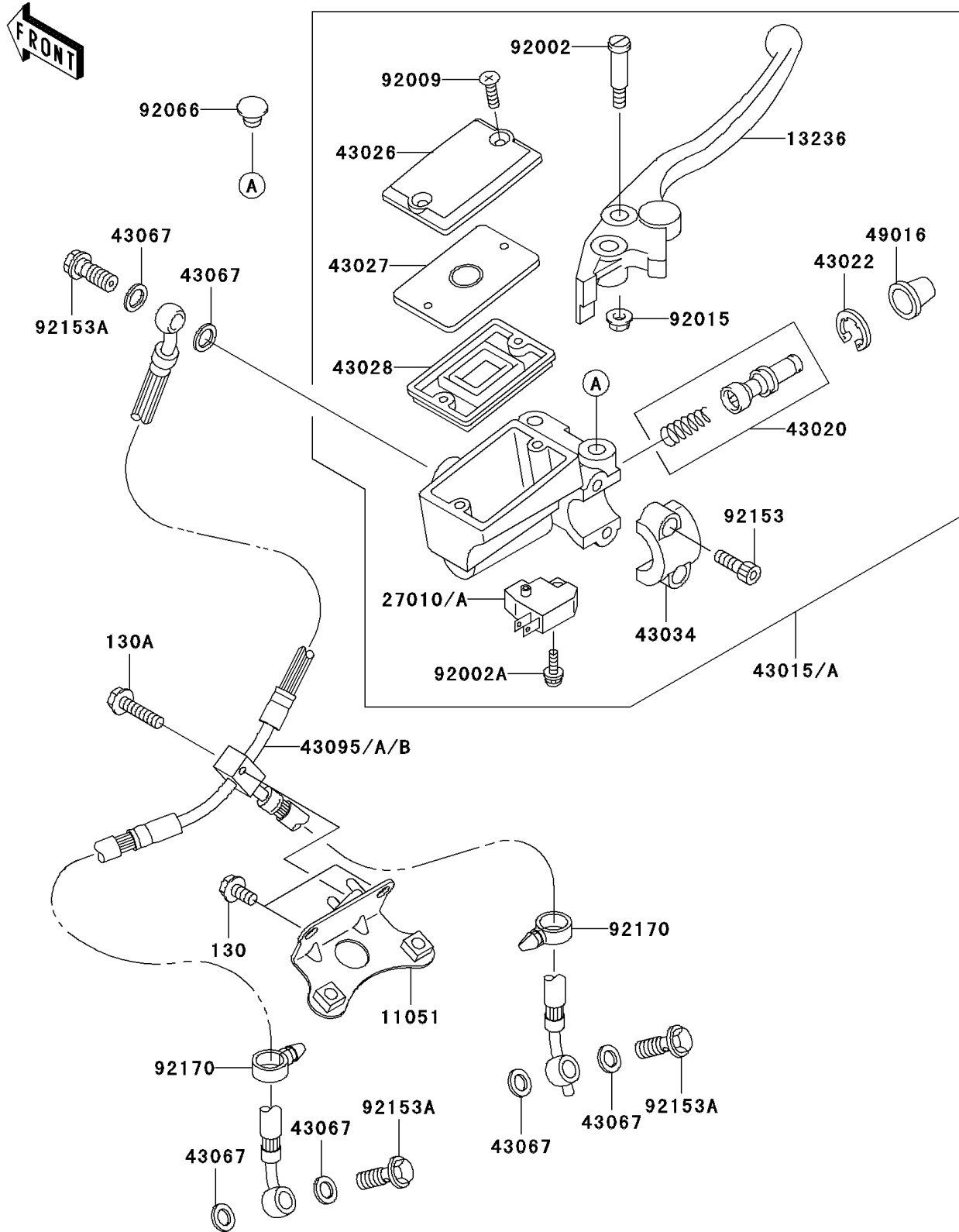


2003 Ninja® ZX™-12R PARTS DIAGRAM

Front Master Cylinder

F2291



2003 Ninja® ZX™ -12R PARTS LIST

Front Master Cylinder

| ITEM NAME | PART NUMBER | QUANTITY |
|--|-------------|----------|
| BOLT-FLANGED (Ref # 130) | 130J0612 | 2 |
| BOLT-FLANGED,6X25 (Ref # 130A) | 130J0625 | 1 |
| BRACKET,3WAY JOINT (Ref # 11051) | 11051-1479 | 1 |
| LEVER-COMP,FRONT BRAKE (Ref # 13236) | 13236-1337 | 1 |
| SWITCH,BRAKE (Ref # 27010A) | 27010-1170 | 1 |
| CYLINDER-ASSY-MASTER,FR (Ref # 43015A) | 43015-1648 | 1 |
| PISTON-COMP-BRAKE,FR (Ref # 43020) | 43020-1054 | 1 |
| STOPPER-BRAKE,PISTON (Ref # 43022) | 43022-1010 | 1 |
| CAP-BRAKE (Ref # 43026) | 43026-1076 | 1 |
| PLATE-DIAPHRAGM (Ref # 43027) | 43027-1055 | 1 |
| DIAPHRAGM,MASTER CYLINDER (Ref # 43028) | 43028-1058 | 1 |
| HOLDER-BRAKE,MASTER CYLINDER (Ref # 43034) | 43034-1053 | 1 |
| WASHER,10.5X15X1.5 (Ref # 43067) | 43067-001 | 6 |
| HOSE-BRAKE,FR (Ref # 43095B) | 43095-1327 | 1 |
| COVER-SEAL,MASTER CYLINDER (Ref # 49016) | 49016-1044 | 1 |
| BOLT,LEVER SET,BLACK (Ref # 92002) | 92002-1322 | 1 |
| BOLT,SCREW,4X12 (Ref # 92002A) | 92002-1323 | 1 |
| SCREW,4MM (Ref # 92009) | 92009-1458 | 2 |
| NUT,FLANGED,6MM,BLACK (Ref # 92015) | 92015-1233 | 1 |
| PLUG,9.5X8,POLYETHYLENE (Ref # 92066) | 92066-1077 | 1 |
| BOLT,SOCKET,6X20 (Ref # 92153) | 92153-0417 | 2 |
| BOLT,OIL,L=23 (Ref # 92153A) | 92153-0627 | 3 |
| CLAMP (Ref # 92170) | 92170-1067 | 2 |