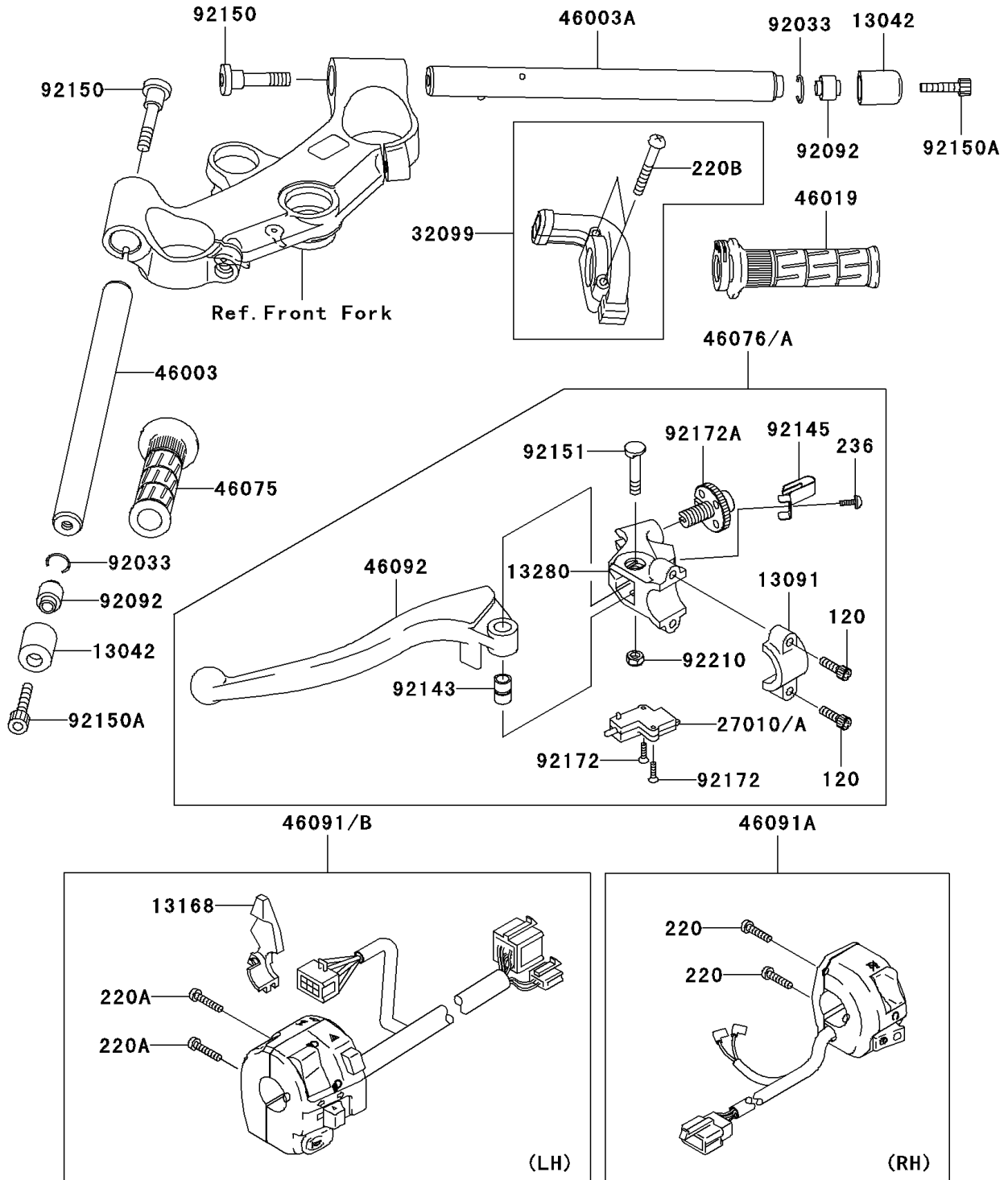


2003 Ninja® ZX™ -12R PARTS DIAGRAM

Handlebar

F2310



2003 Ninja® ZX™-12R PARTS LIST

Handlebar

ITEM NAME	PART NUMBER	QUANTITY
BOLT-SOCKET (Ref # 120)	120S0620	2
SCREW-PAN-CROS (Ref # 220)	220C0522	2
SCREW-PAN-CROS (Ref # 220A)	220C0525	2
SCREW-PAN-CROS (Ref # 220B)	220C0535	2
SCREW-PAN-WSP-CROS,4X10 (Ref # 236)	236C0410	1
WEIGHT,HANDLE (Ref # 13042)	13042-1006	2
HOLDER,CLUTCH LEVER (Ref # 13091)	13091-1624	1
LEVER,CHOKE (Ref # 13168)	13168-1516	1
HOLDER,CLUTCH LEVER (Ref # 13280)	13280-1160	1
SWITCH,CLUTCH (Ref # 27010A)	27010-1447	1
CASE,THROTTLE CABLE (Ref # 32099)	32099-1193	1
HANDLE,LH (Ref # 46003)	46003-1523	1
HANDLE,RH (Ref # 46003A)	46003-1550	1
GRIP-ASSY,THROTTLE (Ref # 46019)	46019-1095	1
GRIP,LH (Ref # 46075)	46075-1144	1
LEVER-ASSY-GRIP,CLUTCH (Ref # 46076A)	46076-1253	1
HOUSING-ASSY-CONTROL,RH (Ref # 46091A)	46091-1809	1
HOUSING-ASSY-CONTROL,LH (Ref # 46091B)	46091-1857	1
LEVER-GRIP,CLUTCH (Ref # 46092)	46092-1214	1
RING-SNAP,OD=22.2 (Ref # 92033)	92033-1102	2
BUSHING-RUBBER,HANDLE (Ref # 92092)	92092-1018	2
COLLAR (Ref # 92143)	92143-1351	1
SPRING (Ref # 92145)	92145-1286	1
BOLT,SOCKET,10X37 (Ref # 92150)	92150-1469	2
BOLT,SOCKET,8X30 (Ref # 92150A)	92150-1604	2
BOLT (Ref # 92151)	92151-1523	1
SCREW,3X16 (Ref # 92172)	92172-0183	2
SCREW,ADJUST NUT (Ref # 92172A)	92172-1060	1
NUT,LOCK,6MM (Ref # 92210)	92210-0006	1