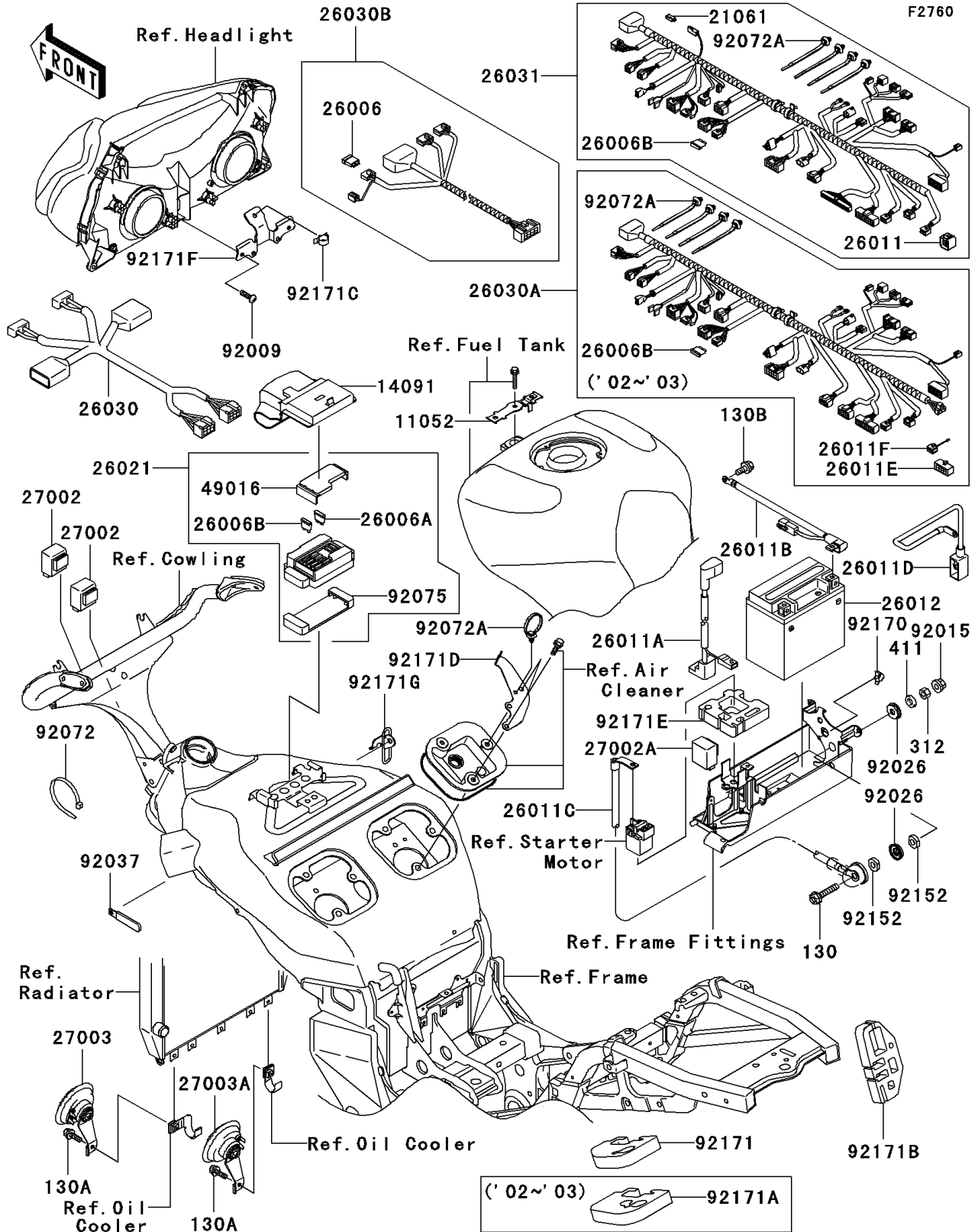


2003 Ninja® ZX™-12R PARTS DIAGRAM

Chassis Electrical Equipment



2003 Ninja® ZX™ -12R PARTS LIST

Chassis Electrical Equipment

| ITEM NAME | PART NUMBER | QUANTITY |
|---|-------------|----------|
| BRACKET,FUSE (Ref # 11052) | 11052-1830 | 1 |
| COVER,JUNCTION BOX (Ref # 14091) | 14091-1499 | 1 |
| FUSE,30A-G (Ref # 26006) | 26006-1006 | 1 |
| FUSE,10A-R (Ref # 26006A) | 26006-1068 | 6 |
| FUSE,15A (Ref # 26006B) | 26006-1075 | 4 |
| WIRE-LEAD,BATTERY(+) (Ref # 26011A) | 26011-1730 | 1 |
| WIRE-LEAD,BATTERY(-) (Ref # 26011B) | 26011-1731 | 1 |
| WIRE-LEAD,SUB (Ref # 26011C) | 26011-1762 | 1 |
| WIRE-LEAD,(+),JUMP START (Ref # 26011D) | 26011-1772 | 1 |
| WIRE-LEAD,SETTING(A) (Ref # 26011E) | 26011-1773 | 1 |
| WIRE-LEAD,DIAGNOSIS (Ref # 26011F) | 26011-1774 | 1 |
| BATTERY,YTX14-BS,12V 12AH (Ref # 26012) | 26012-1334 | 1 |
| JUNCTION BOX (Ref # 26021) | 26021-1106 | 1 |
| HARNESS,FR (Ref # 26030) | 26030-1779 | 1 |
| HARNESS,MAIN (Ref # 26030A) | 26030-1939 | 1 |
| HARNESS,SUB (Ref # 26030B) | 26030-1959 | 1 |
| RELAY-ASSY (Ref # 27002) | 27002-1086 | 2 |
| RELAY-ASSY,TURN SIGNAL (Ref # 27002A) | 27002-1101 | 1 |
| HORN,LH (Ref # 27003) | 27003-1418 | 1 |
| HORN,RH (Ref # 27003A) | 27003-1419 | 1 |
| COVER-SEAL,FUSE (Ref # 49016) | 49016-1177 | 1 |
| SCREW,TAPPING,5X14 (Ref # 92009) | 92009-1197 | 2 |
| NUT,FLANGED,6MM (Ref # 92015) | 92015-1367 | 1 |
| SPACER (Ref # 92026) | 92026-1575 | 2 |
| CLAMP,HARNESS,L=100 (Ref # 92037) | 92037-1636 | 1 |
| BAND,L=202 (Ref # 92072) | 92072-1195 | 1 |
| BAND (Ref # 92072A) | 92072-1414 | 5 |
| DAMPER,JUNCTION BOX (Ref # 92075) | 92075-1688 | 1 |
| COLLAR (Ref # 92152) | 92152-1252 | 2 |

2003 Ninja® ZX™ -12R PARTS LIST

Chassis Electrical Equipment

| ITEM NAME | PART NUMBER | QUANTITY |
|--|-------------|----------|
| CLAMP,HARNESS (Ref # 92170) | 92170-1494 | 1 |
| CLAMP,HARNESS (Ref # 92171A) | 92171-1255 | 1 |
| CLAMP,HARNESS (Ref # 92171B) | 92171-1256 | 1 |
| CLAMP,HARNESS (Ref # 92171C) | 92171-1269 | 1 |
| CLAMP,HARNESS (Ref # 92171D) | 92171-1371 | 1 |
| CLAMP,HARNESS (Ref # 92171E) | 92171-1459 | 1 |
| CLAMP,HEAD LAMP COUPLER (Ref # 92171F) | 92171-1481 | 1 |
| BOLT-FLANGED,6X30 (Ref # 130) | 130H0630 | 1 |
| BOLT-FLANGED (Ref # 130A) | 130J0612 | 2 |
| BOLT-FLANGED,6X10 (Ref # 130B) | 130V0610 | 1 |
| NUT-HEX (Ref # 312) | 312H0600 | 1 |
| WASHER-PLAIN,6MM (Ref # 411) | 411E0600 | 1 |
| CLAMP,HARNESS&CABLE (Ref # 92171G) | 92171-1486 | 1 |