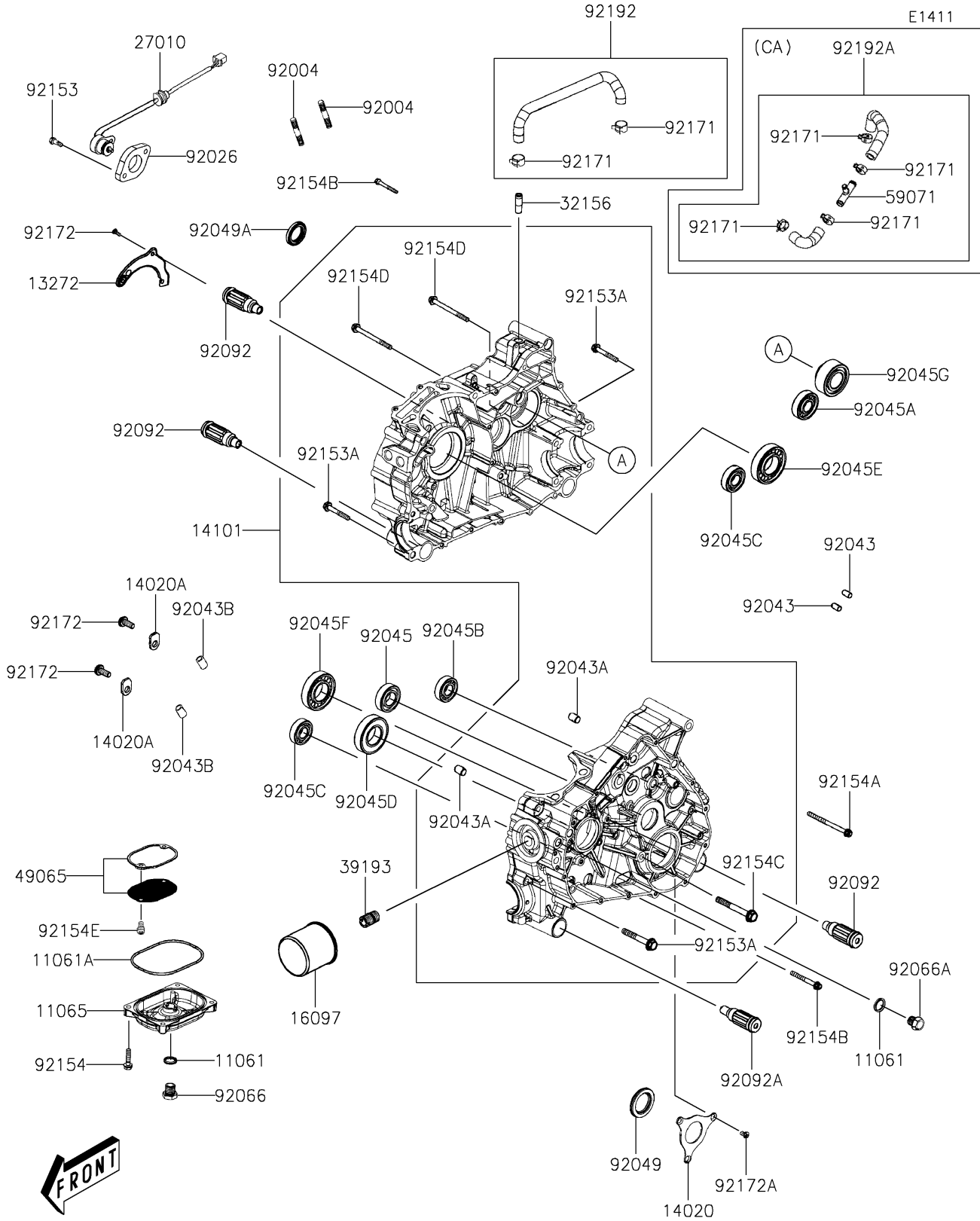


# 2025 BRUTE FORCE® 450 4x4 PARTS DIAGRAM

## Crankcase



## 2025 BRUTE FORCE® 450 4x4 PARTS LIST

### Crankcase

ITEM NAME	PART NUMBER	QUANTITY
GASKET (Ref # 11061)	11061-Y064	2
GASKET,OIL STRAINER CAP (Ref # 11061A)	11061-Y077	1
CAP,OIL STRAINER (Ref # 11065)	11065-Y046	1
PLATE,OIL GUIDE (Ref # 13272)	13272-Y045	1
RETAINER (Ref # 14020)	14020-Y001	1
RETAINER (Ref # 14020A)	14020-Y002	2
SET-CRANKCASE (Ref # 14101)	14101-Y001	1
FILTER-ASSY-OIL (Ref # 16097)	16097-Y001	1
SWITCH,GEAR CHANGE (Ref # 27010)	27010-Y026	1
PIPE,BREATHER (Ref # 32156)	32156-Y001	1
PIPE-OIL (Ref # 39193)	39193-Y001	1
FILTER-OIL (Ref # 49065)	49065-Y001	1
JOINT,3WAY (Ref # 59071)	59071-Y013	1
STUD,6X40 (Ref # 92004)	92004-Y013	2
SPACER,GEAR CHANGE SENSOR (Ref # 92026)	92026-Y014	1
PIN,8X10 (Ref # 92043)	92043-Y026	2
PIN,12X20 (Ref # 92043A)	92043-Y027	2
PIN,DOWEL (Ref # 92043B)	92043-Y058	2
BEARING-BALL,6205 (Ref # 92045)	92045-Y015	1
BEARING-BALL,6304 (Ref # 92045A)	92045-Y016	1
BEARING-BALL,6204 (Ref # 92045B)	92045-Y041	1
BEARING-BALL,ESB204JR2C3 (Ref # 92045C)	92045-Y057	2
BEARING-BALL,6207LUAC3 (Ref # 92045D)	92045-Y058	1
BEARING-BALL,6207-9C3 (Ref # 92045E)	92045-Y059	1
BEARING-BALL,6207 (Ref # 92045F)	92045-Y061	1
BEARING-BALL,30X62X23.8 (Ref # 92045G)	92045-Y066	1
SEAL-OIL,34X52X6 (Ref # 92049)	92049-Y054	1
SEAL-OIL,30X44X7 (Ref # 92049A)	92049-Y056	1
PLUG,DRAIN (Ref # 92066)	92066-Y027	1

## 2025 BRUTE FORCE® 450 4x4 PARTS LIST

### Crankcase

ITEM NAME	PART NUMBER	QUANTITY
PLUG,CRANKCASE (Ref # 92066A)	92066-Y028	1
BUSHING-RUBBER,ENGINE HANGER (Ref # 92092)	92092-Y007	3
BUSHING-RUBBER,ENG HANGER,LONG (Ref # 92092A)	92092-Y008	1
BOLT,FLANGE,5X22 (Ref # 92153)	92153-Y006	2
BOLT,FLANGE,8X50 (Ref # 92153A)	92153-Y037	4
BOLT,FLANGE,6X25 (Ref # 92154)	92154-Y066	4
BOLT,FLANGE,6X70 (Ref # 92154A)	92154-Y108	3
BOLT,FLANGE,6X45 (Ref # 92154B)	92154-Y135	10
BOLT,FLANGE,8X60 (Ref # 92154C)	92154-Y141	1
BOLT,FLANGE,8X85 (Ref # 92154D)	92154-Y196	3
BOLT,5X12 (Ref # 92154E)	92154-Y241	2
CLAMP (Ref # 92171)	92171-Y022	4
SCREW,PAN,6X14 (Ref # 92172)	92172-Y099	5
SCREW,6X16 (Ref # 92172A)	92172-Y101	3
TUBE,CRANKCASE (Ref # 92192)	92192-Y078	1
TUBE,CRANKCASE (Ref # 92192A)	92192-Y086	1
CLAMP (Ref # 92171)	92171-Y022	2