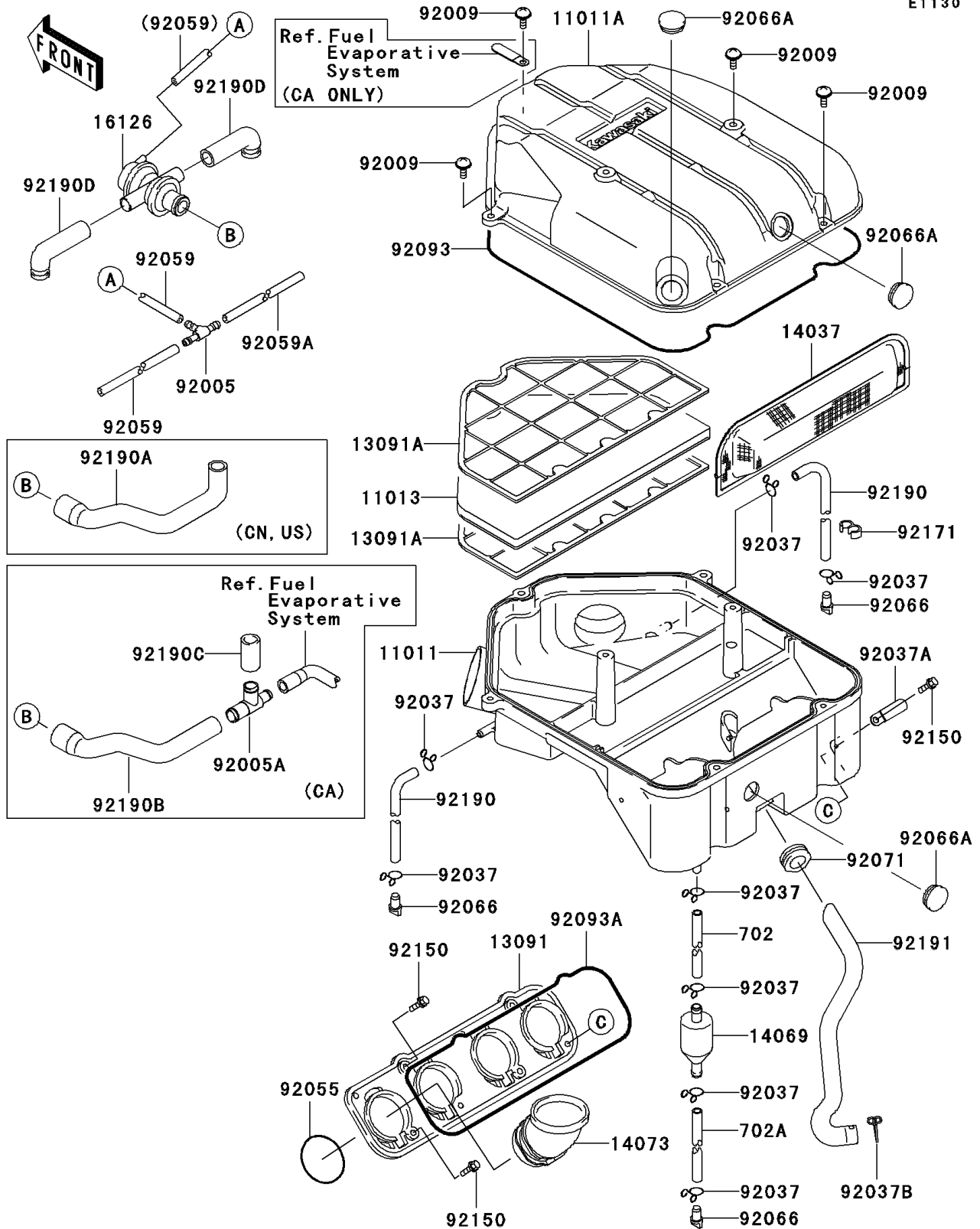


2004 ZZR1200 PARTS DIAGRAM

Air Cleaner

E1130



2004 ZZR1200 PARTS LIST

Air Cleaner

| ITEM NAME | PART NUMBER | QUANTITY |
|------------------------------------|-------------|----------|
| TUBE-RUBBER,7X10X170 (Ref # 702) | 702A07170 | 1 |
| TUBE-RUBBER,7X10X280 (Ref # 702A) | 702A07280 | 1 |
| CASE-AIR FILTER,LWR (Ref # 11011) | 11011-1396 | 1 |
| CASE-AIR FILTER,UPP (Ref # 11011A) | 11011-1650 | 1 |
| ELEMENT-AIR FILTER (Ref # 11013) | 11013-1227 | 1 |
| HOLDER,CARBURETOR (Ref # 13091) | 13091-1818 | 1 |
| HOLDER,ELEMENT (Ref # 13091A) | 13091-1819 | 2 |
| SCREEN,AIR FILTER (Ref # 14037) | 14037-1305 | 1 |
| BREATHER (Ref # 14069) | 14069-1051 | 1 |
| DUCT,AIR FILTER (Ref # 14073) | 14073-1575 | 4 |
| VALVE,AIR SWITCH (Ref # 16126) | 16126-1416 | 1 |
| FITTING,TUBE,T-TYPE (Ref # 92005) | 92005-1017 | 1 |
| SCREW,6X16 (Ref # 92009) | 92009-1621 | 7 |
| CLAMP,TUBE (Ref # 92037) | 92037-147 | 8 |
| CLAMP,L=45 (Ref # 92037A) | 92037-1539 | 1 |
| CLAMP,TUBE (Ref # 92037B) | 92037-213 | 1 |
| RING-O,67.7X3.1 (Ref # 92055) | 92055-1434 | 4 |
| TUBE,4X9X190 (Ref # 92059) | 92059-1032 | 2 |
| TUBE,FUEL,4X9X140 (Ref # 92059A) | 92059-1230 | 1 |
| PLUG,DRAIN (Ref # 92066) | 92066-1211 | 3 |
| PLUG (Ref # 92066A) | 92066-1389 | 3 |
| GROMMET (Ref # 92071) | 92071-1165 | 1 |
| SEAL,AIR FILTER CASE (Ref # 92093) | 92093-1349 | 1 |
| SEAL,AIR FILTER (Ref # 92093A) | 92093-1350 | 1 |
| BOLT,5X16 (Ref # 92150) | 92150-1363 | 8 |
| CLAMP (Ref # 92171) | 92171-1184 | 1 |
| TUBE,DIRT SIDE (Ref # 92190) | 92190-1372 | 2 |
| TUBE (Ref # 92190D) | 92190-1436 | 2 |
| TUBE,BLOWBY (Ref # 92191) | 92191-1762 | 1 |

2004 ZZR1200 PARTS LIST

Air Cleaner

| ITEM NAME | PART NUMBER | QUANTITY |
|---|-------------|----------|
| FITTING,T-TYPE (Ref # 92005A) | 92005-1252 | 1 |
| TUBE,VALVE-AIR FILTER (Ref # 92190A) | 92190-1419 | 1 |
| TUBE,SWITCH-FITTING (Ref # 92190B) | 92190-1420 | 1 |
| TUBE,FITTING-FILTER CASE (Ref # 92190C) | 92190-1421 | 1 |