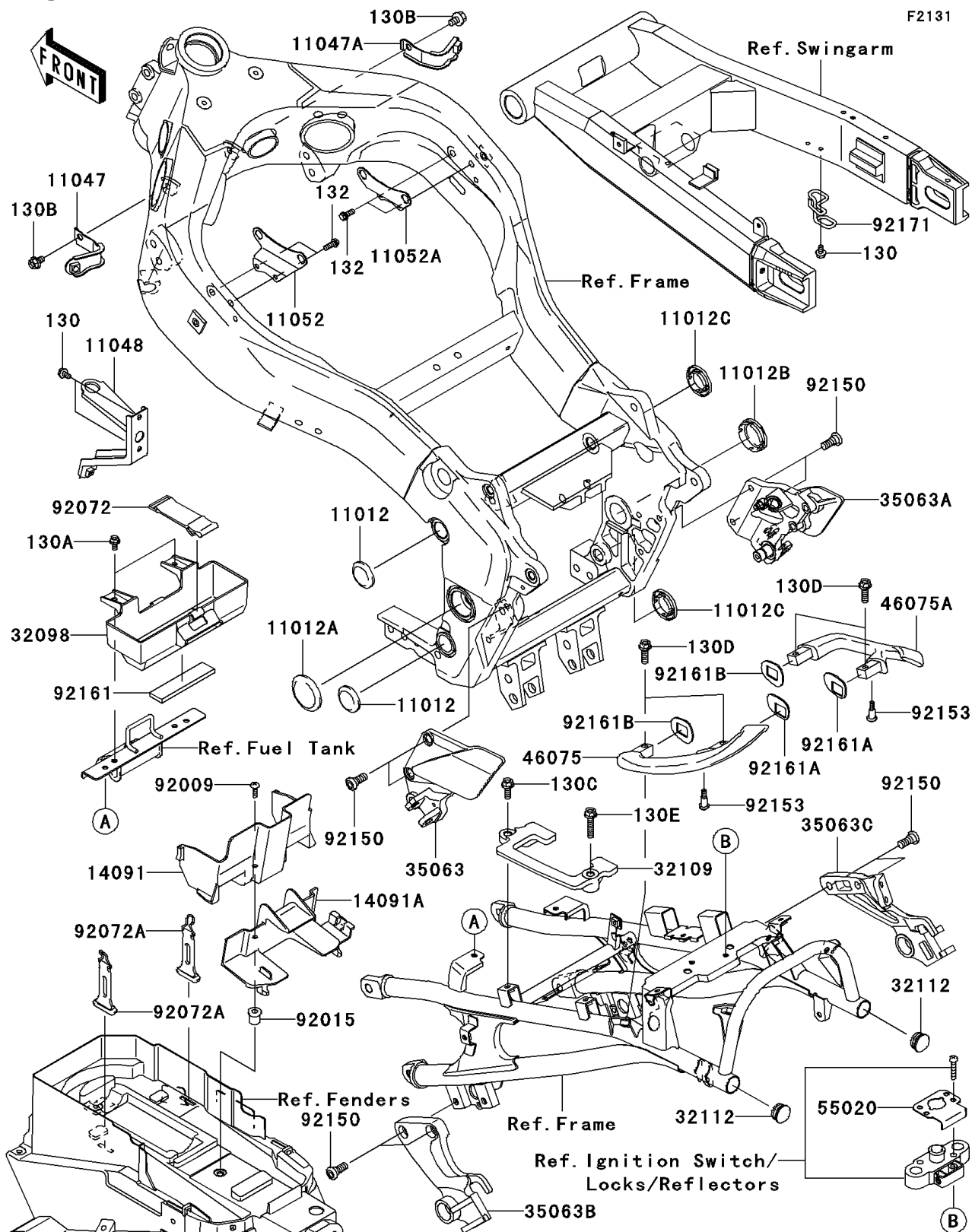


2004 ZZR1200 PARTS DIAGRAM

Frame Fittings



2004 ZZR1200 PARTS LIST

Frame Fittings

| ITEM NAME | PART NUMBER | QUANTITY |
|---|----------------|----------|
| BOLT-FLANGED (Ref # 130) | 130J0610 | 3 |
| BOLT-FLANGED (Ref # 130A) | 130J0612 | 2 |
| BOLT-FLANGED (Ref # 130B) | 130J0812 | 2 |
| BOLT-FLANGED,8X20 (Ref # 130C) | 130J0820 | 1 |
| BOLT-FLANGED,8X25,BLACK (Ref # 130D) | 130J0825 | 4 |
| BOLT-FLANGED,8X35,BLACK (Ref # 130E) | 130J0835 | 1 |
| BOLT-FLANGED-SMALL (Ref # 132) | 132J0616 | 4 |
| CAP (Ref # 11012) | 11012-1460 | 2 |
| CAP (Ref # 11012A) | 11012-1657 | 1 |
| CAP (Ref # 11012B) | 11012-1688 | 1 |
| CAP,PIVOT (Ref # 11012C) | 11012-1821 | 2 |
| BRACKET,RADIATOR,UPP,LH (Ref # 11047) | 11047-1931 | 1 |
| BRACKET,RADIATOR,UPP,RH (Ref # 11047A) | 11047-1932 | 1 |
| BRACKET,OIL COOLER&RADIATOR (Ref # 11048) | 11048-1169 | 1 |
| BRACKET,IGNITION COIL,LH (Ref # 11052) | 11052-1695 | 1 |
| BRACKET,IGNITION COIL,RH (Ref # 11052A) | 11052-1696 | 1 |
| COVER,STORAGE,FR (Ref # 14091) | 14091-1459 | 1 |
| COVER,STORAGE,RR (Ref # 14091A) | 14091-1460 | 1 |
| CASE-TOOL (Ref # 32098) | 32098-1141 | 1 |
| GRIP-FRAME (Ref # 32109) | 32109-1306 | 1 |
| PLUG,22X3 (Ref # 32112) | 32112-008 | 2 |
| STAY,FR,LH,P.SILVER (Ref # 35063) | 35063-1216-458 | 1 |
| STAY,FR,RH,P.SILVER (Ref # 35063A) | 35063-1217-458 | 1 |
| STAY,RR,LH,P.SILVER (Ref # 35063B) | 35063-1218-458 | 1 |
| STAY,RR,RH,P.SILVER (Ref # 35063C) | 35063-1219-458 | 1 |
| GRIP,GRAB RAIL,LH,F.BLACK (Ref # 46075) | 46075-1206-21 | 1 |
| GRIP,GRAB RAIL,RH,F.BLACK (Ref # 46075A) | 46075-1207-21 | 1 |
| GUARD,SEAT STRIKER (Ref # 55020) | 55020-1498 | 1 |
| SCREW,5X18 (Ref # 92009) | 92009-1655 | 1 |

2004 ZZR1200 PARTS LIST

Frame Fittings

| ITEM NAME | PART NUMBER | QUANTITY |
|------------------------------------|-------------|----------|
| NUT,WELL,5MM (Ref # 92015) | 92015-1757 | 1 |
| BAND,TOOL (Ref # 92072) | 92072-1176 | 1 |
| BAND,U LOCK (Ref # 92072A) | 92072-1428 | 2 |
| BOLT,SOCKET,8X20 (Ref # 92150) | 92150-1839 | 8 |
| BOLT,SOCKET,6MM (Ref # 92153) | 92153-1180 | 2 |
| DAMPER (Ref # 92161) | 92161-1274 | 1 |
| DAMPER,GRAB RAIL,RR (Ref # 92161A) | 92161-1316 | 2 |
| DAMPER,GRAB RAIL,FR (Ref # 92161B) | 92161-1317 | 2 |
| CLAMP,HOSE (Ref # 92171) | 92171-1532 | 1 |