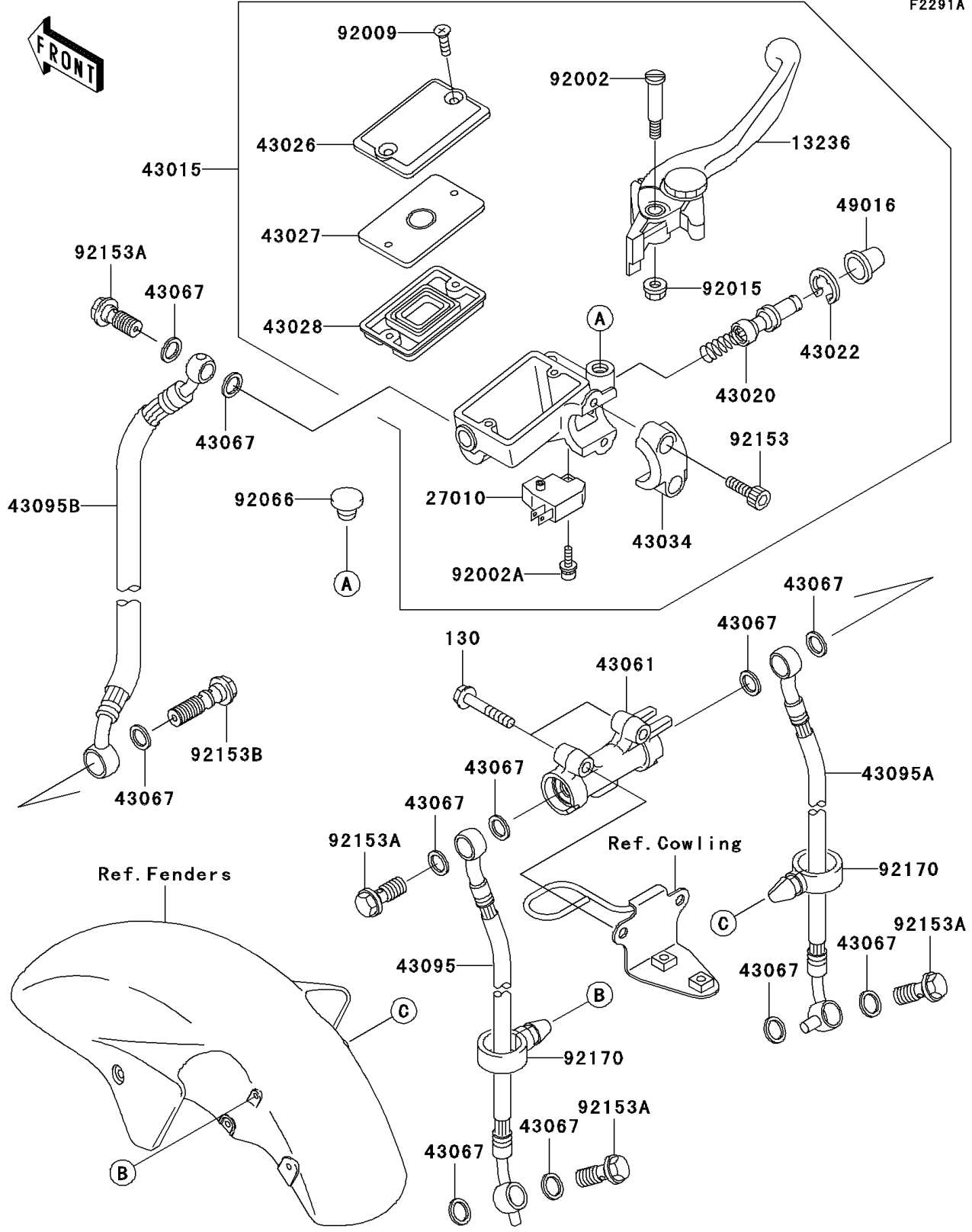


# 2004 ZZR1200 PARTS DIAGRAM

Front Master Cylinder(C3/C4)

F2291A



## 2004 ZZR1200 PARTS LIST

### Front Master Cylinder(C3/C4)

ITEM NAME	PART NUMBER	QUANTITY
BOLT-FLANGED (Ref # 130)	130L0635	2
LEVER-COMP,FRONT BRAKE (Ref # 13236)	13236-1337	1
SWITCH,BRAKE (Ref # 27010)	27010-0025	1
CYLINDER-ASSY-MASTER,FR (Ref # 43015)	43015-0011	1
PISTON-COMP-BRAKE,FR (Ref # 43020)	43020-1054	1
STOPPER-BRAKE,PISTON (Ref # 43022)	43022-1010	1
CAP-BRAKE (Ref # 43026)	43026-1076	1
PLATE-DIAPHRAGM (Ref # 43027)	43027-1055	1
DIAPHRAGM,MASTER CYLINDER (Ref # 43028)	43028-1058	1
HOLDER-BRAKE,MASTER CYLINDER (Ref # 43034)	43034-1053	1
JOINT-BRAKE (Ref # 43061)	43061-1002	1
WASHER,10.5X15X1.5 (Ref # 43067)	43067-001	11
HOSE-BRAKE,FR,LWR,LH (Ref # 43095)	43095-1274	1
HOSE-BRAKE,FR,LWR,RH (Ref # 43095A)	43095-1275	1
HOSE-BRAKE,FR,UPP (Ref # 43095B)	43095-1295	1
COVER-SEAL,MASTER CYLINDER (Ref # 49016)	49016-1044	1
BOLT,LEVER SET,BLACK (Ref # 92002)	92002-1322	1
BOLT,SCREW,4X12 (Ref # 92002A)	92002-1323	1
SCREW,4MM (Ref # 92009)	92009-1458	2
NUT,FLANGED,6MM,BLACK (Ref # 92015)	92015-1233	1
PLUG,9.5X8,POLYETHYLENE (Ref # 92066)	92066-1077	1
BOLT,SOCKET,6X20 (Ref # 92153)	92153-0417	2
BOLT,OIL,L=23 (Ref # 92153A)	92153-0627	4
BOLT,OIL,L=37 (Ref # 92153B)	92153-0628	1
CLAMP (Ref # 92170)	92170-1067	2