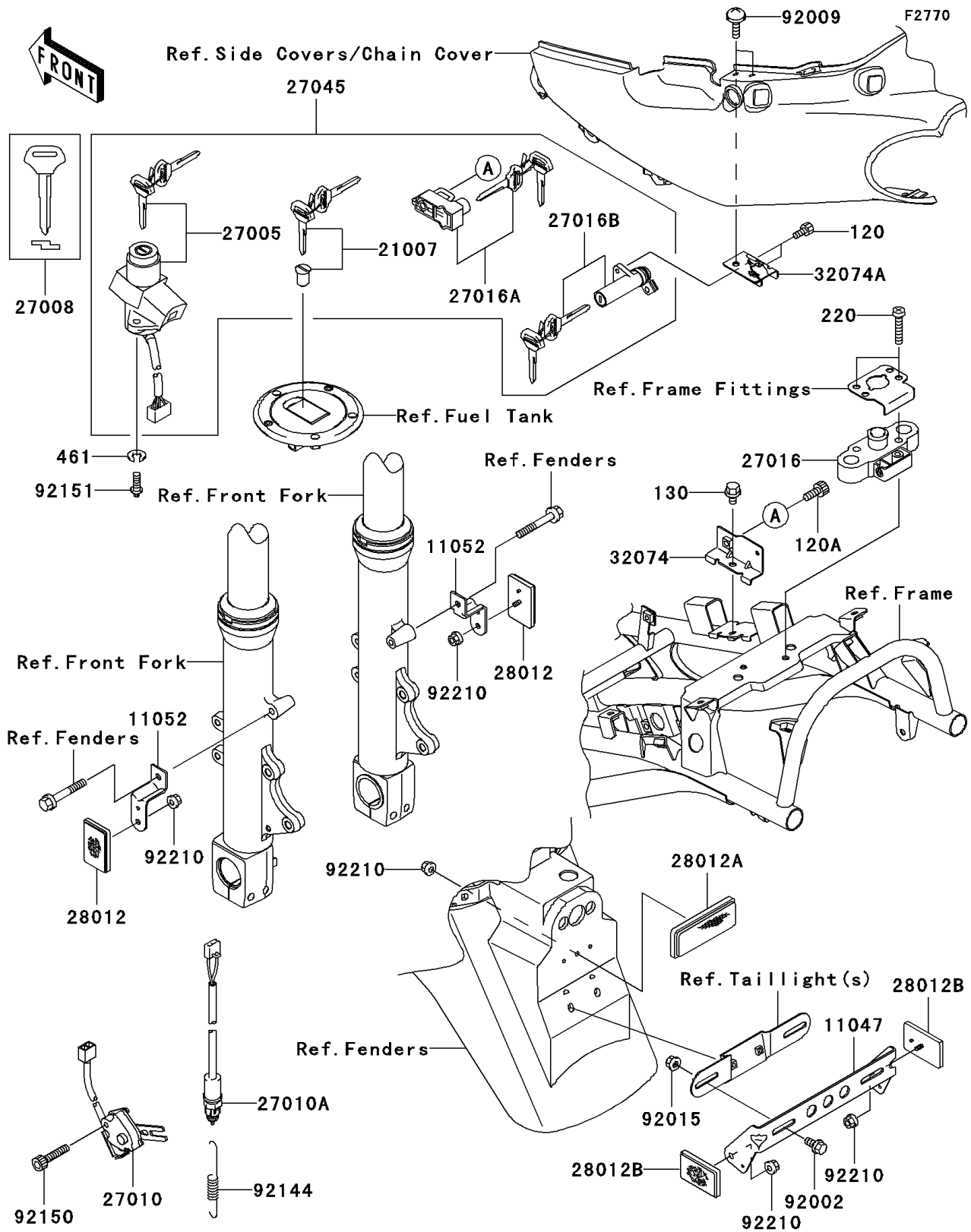


# 2004 ZZR1200 PARTS DIAGRAM

Ignition Switch/Locks/Reflectors



## 2004 ZZR1200 PARTS LIST

### Ignition Switch/Locks/Reflectors

| ITEM NAME                              | PART NUMBER | QUANTITY |
|--|-------------|----------|
| BOLT-SOCKET (Ref # 120)                | 120S0512    | 2        |
| BOLT-SOCKET (Ref # 120A)               | 120S0616    | 1        |
| BOLT-FLANGED (Ref # 130)               | 130J0612    | 1        |
| SCREW-PAN-CROSS (Ref # 220)            | 220F0630    | 2        |
| WASHER-SPRING (Ref # 461)              | 461L0600    | 2        |
| BRACKET,REFLECTOR (Ref # 11047)        | 11047-1470  | 1        |
| BRACKET,REFLECTOR (Ref # 11052)        | 11052-1671  | 2        |
| ROTOR,LOCK,TANK CAP (Ref # 21007)      | 21007-5042  | 1        |
| SWITCH-ASSY-IGNITION (Ref # 27005)     | 27005-5120  | 1        |
| KEY-LOCK,BLANK (Ref # 27008)           | 27008-1189  | 1        |
| SWITCH,SIDE STAND (Ref # 27010)        | 27010-1445  | 1        |
| SWITCH,BRAKE LAMP (Ref # 27010A)       | 27010-1452  | 1        |
| LOCK-ASSY,SEAT STRIKER (Ref # 27016)   | 27016-1098  | 1        |
| LOCK-ASSY,HELMET (Ref # 27016A)        | 27016-5247  | 1        |
| LOCK-ASSY,SEAT (Ref # 27016B)          | 27016-5250  | 1        |
| SWITCH-ASSY (Ref # 27045)              | 27045-5163  | 1        |
| REFLECTOR-REFLEX (Ref # 28012)         | 28012-1003  | 2        |
| REFLECTOR-REFLEX (Ref # 28012A)        | 28012-1077  | 1        |
| REFLECTOR-REFLEX (Ref # 28012B)        | 28012-1088  | 2        |
| BRACKET-LOCK,HELMET (Ref # 32074)      | 32074-1198  | 1        |
| BRACKET-LOCK,SEAT (Ref # 32074A)       | 32074-1203  | 1        |
| BOLT,6X12 (Ref # 92002)                | 92002-1132  | 2        |
| SCREW,6X20 (Ref # 92009)               | 92009-3763  | 2        |
| NUT,FLANGED,6MM (Ref # 92015)          | 92015-1367  | 2        |
| SPRING,REAR BRAKE SWITCH (Ref # 92144) | 92144-1283  | 1        |
| BOLT,SOCKET,6X30 (Ref # 92150)         | 92150-1433  | 1        |
| BOLT,TORX,6X16 (Ref # 92151)           | 92151-1911  | 2        |
| NUT,FLANGED,5MM (Ref # 92210)          | 92210-0007  | 5        |