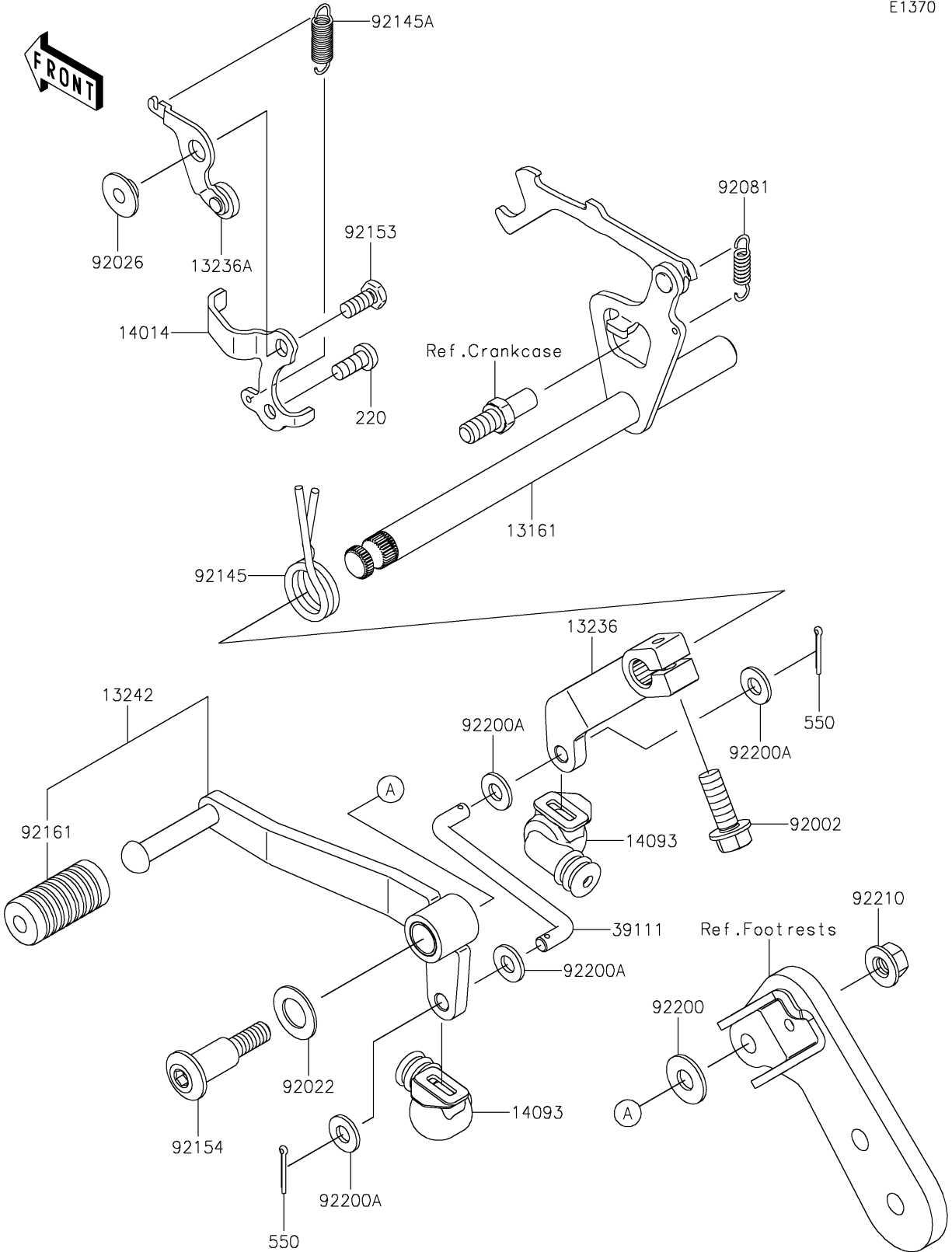


# 2025 Z125 PRO PARTS DIAGRAM

## Gear Change Mechanism

E1370



## 2025 Z125 PRO PARTS LIST

### Gear Change Mechanism

| ITEM NAME                                | PART NUMBER | QUANTITY |
|--|-------------|----------|
| LEVER-COMP-CHANGE SHAFT (Ref # 13161)    | 13161-0575  | 1        |
| LEVER-COMP (Ref # 13236)                 | 13236-0766  | 1        |
| LEVER-COMP,POSITION (Ref # 13236A)       | 13236-1256  | 1        |
| LEVER-ASSY-CHANGE,PEDAL (Ref # 13242)    | 13242-0136  | 1        |
| PLATE-POSITION (Ref # 14014)             | 14014-0558  | 1        |
| COVER (Ref # 14093)                      | 14093-0321  | 2        |
| ROD-TIE (Ref # 39111)                    | 39111-0380  | 1        |
| BOLT,6X20 (Ref # 92002)                  | 92002-1237  | 1        |
| WASHER,12.5X22X1.2 (Ref # 92022)         | 92022-072   | 1        |
| SPACER (Ref # 92026)                     | 92026-1217  | 1        |
| SPRING,CHANGE LEVER (Ref # 92081)        | 92081-076   | 1        |
| SPRING,CHANGE SHAFT RETURN (Ref # 92145) | 92145-0984  | 1        |
| SPRING,CHANGE LEVER (Ref # 92145A)       | 92145-0986  | 1        |
| BOLT,6X14 (Ref # 92153)                  | 92153-0571  | 1        |
| BOLT (Ref # 92154)                       | 92154-1305  | 1        |
| DAMPER,CHANGE PEDAL (Ref # 92161)        | 92161-1357  | 1        |
| WASHER,8.5X20X1.6 (Ref # 92200)          | 92200-0490  | 1        |
| WASHER,7.1X15X1.6 (Ref # 92200A)         | 92200-2366  | 4        |
| NUT,FLANGED,8MM (Ref # 92210)            | 92210-1376  | 1        |
| SCREW-PAN-CROS,6X14 (Ref # 220)          | 220AA0614   | 1        |
| PIN-COTTER,2.0X15 (Ref # 550)            | 550AA2015   | 2        |