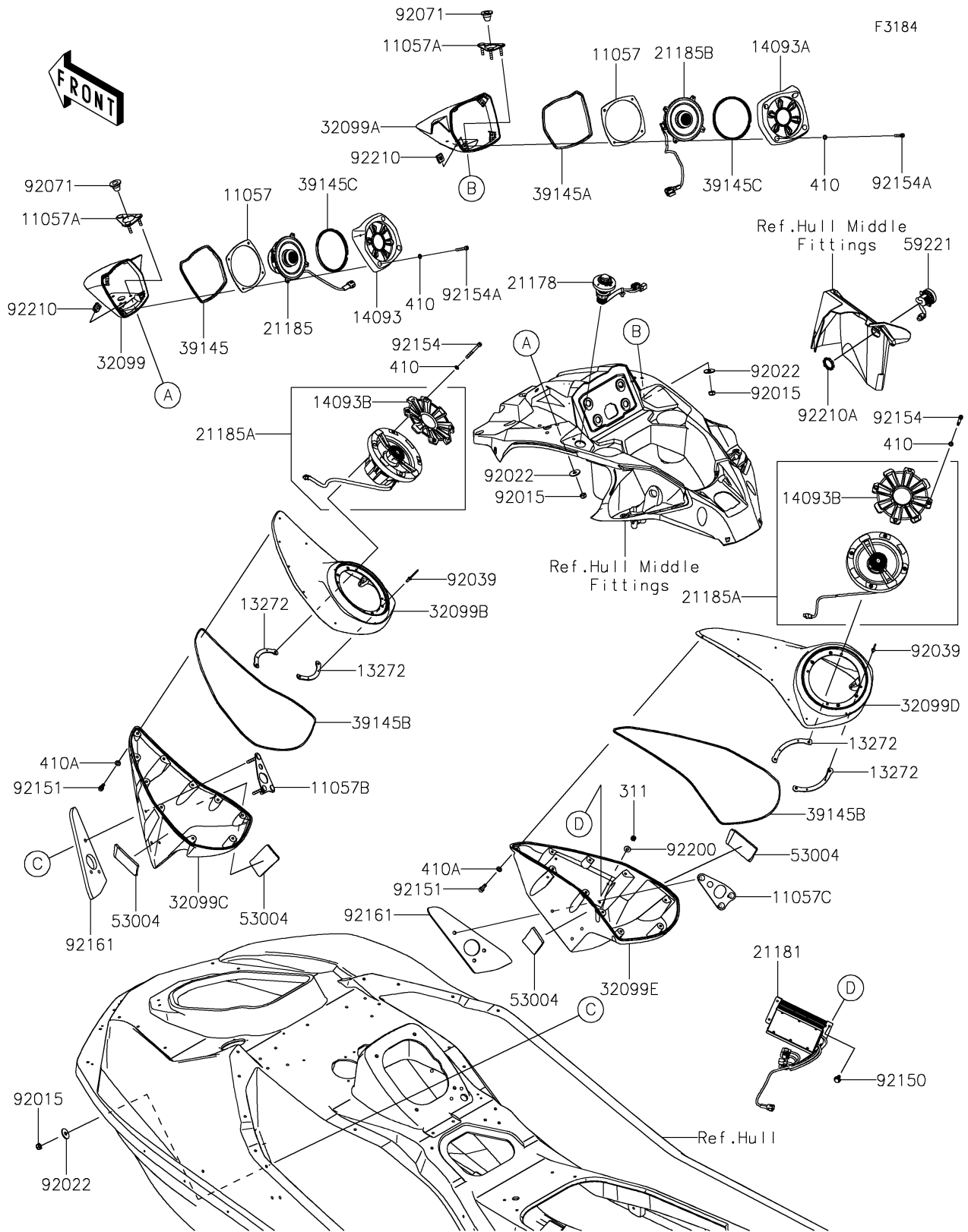


2025 Ultra 310LX PARTS DIAGRAM

Other



2025 Ultra 310LX PARTS LIST

Other

| ITEM NAME | PART NUMBER | QUANTITY |
|--|----------------|----------|
| BRACKET,SPEAKER,UPP (Ref # 11057) | 11057-7386 | 2 |
| BRACKET,SPEAKER CASE,UPP (Ref # 11057A) | 11057-7394 | 2 |
| BRACKET,SPEAKER CASE,LH,LWR (Ref # 11057B) | 11057-7461 | 1 |
| BRACKET,SPEAKER CASE,RH,LWR (Ref # 11057C) | 11057-7462 | 1 |
| PLATE,SPEAKER,LWR (Ref # 13272) | 13272-3866 | 4 |
| COVER,SPEAKER,LH,UPP (Ref # 14093) | 14093-1178 | 1 |
| COVER,SPEAKER,RH,UPP (Ref # 14093A) | 14093-1179 | 1 |
| COVER,SPEAKER GRILL (Ref # 14093B) | 14093-1186 | 2 |
| CONTROL-SWITCH,AUDIO (Ref # 21178) | 21178-0005 | 1 |
| AMPLIFIER (Ref # 21181) | 21181-0021 | 1 |
| SPEAKER,LH,UPP (Ref # 21185) | 21185-0020 | 1 |
| SPEAKER,LWR (Ref # 21185A) | 21185-0021 | 2 |
| SPEAKER,RH,UPP (Ref # 21185B) | 21185-0023 | 1 |
| CASE,SPEAKER,LH,UPP (Ref # 32099) | 32099-0816 | 1 |
| CASE,SPEAKER,RH,UPP (Ref # 32099A) | 32099-0817 | 1 |
| CASE,SPEAKER,LH,LWR,UPP,S.BLK (Ref # 32099B) | 32099-0818-839 | 1 |
| CASE,SPEAKER,LH,LWR,LWR,S.BLK (Ref # 32099C) | 32099-0819-839 | 1 |
| CASE,SPEAKER,RH,LWR,UPP,S.BLK (Ref # 32099D) | 32099-0820-839 | 1 |
| CASE,SPEAKER,RH,LWR,LWR,S.BLK (Ref # 32099E) | 32099-0821-839 | 1 |
| TRIM-SEAL,SPEAKER CASE,LH,UPP (Ref # 39145) | 39145-0731 | 1 |
| TRIM-SEAL,SPEAKER CASE,RH,UPP (Ref # 39145A) | 39145-0732 | 1 |
| TRIM-SEAL,SPEAKER CASE,LWR (Ref # 39145B) | 39145-0734 | 2 |
| TRIM-SEAL,SPEAKER,UPP (Ref # 39145C) | 39145-0735 | 2 |
| MAT (Ref # 53004) | 53004-0703 | 4 |
| CONNECTOR-CORD,USB (Ref # 59221) | 59221-0020 | 1 |
| NUT,LOCK,6MM (Ref # 92015) | 92015-3766 | 12 |
| WASHER,6.5X20X1.5 (Ref # 92022) | 92022-3710 | 12 |
| RIVET,3.2X8 (Ref # 92039) | 92039-3763 | 8 |
| GROMMET (Ref # 92071) | 92071-3826 | 2 |

2025 Ultra 310LX PARTS LIST

Other

| ITEM NAME | PART NUMBER | QUANTITY |
|------------------------------------|-------------|----------|
| BOLT,5X12 (Ref # 92150) | 92150-3760 | 4 |
| BOLT,SOCKET,5X14 (Ref # 92151) | 92151-1581 | 20 |
| BOLT,SOCKET,4X40 (Ref # 92154) | 92154-4331 | 8 |
| BOLT,HEX,4X25 (Ref # 92154A) | 92154-4366 | 8 |
| DAMPER (Ref # 92161) | 92161-2459 | 2 |
| WASHER,5X12X1 (Ref # 92200) | 92200-3796 | 4 |
| NUT,CLIP,4MM (Ref # 92210) | 92210-1877 | 6 |
| NUT (Ref # 92210A) | 92210-1934 | 1 |
| NUT-HEX,5MM (Ref # 311) | 311R0500 | 4 |
| WASHER-PLAIN-SMALL,4MM (Ref # 410) | 410S0400 | 16 |
| W-PLAIN-S,5MM (Ref # 410A) | 410S0500 | 20 |