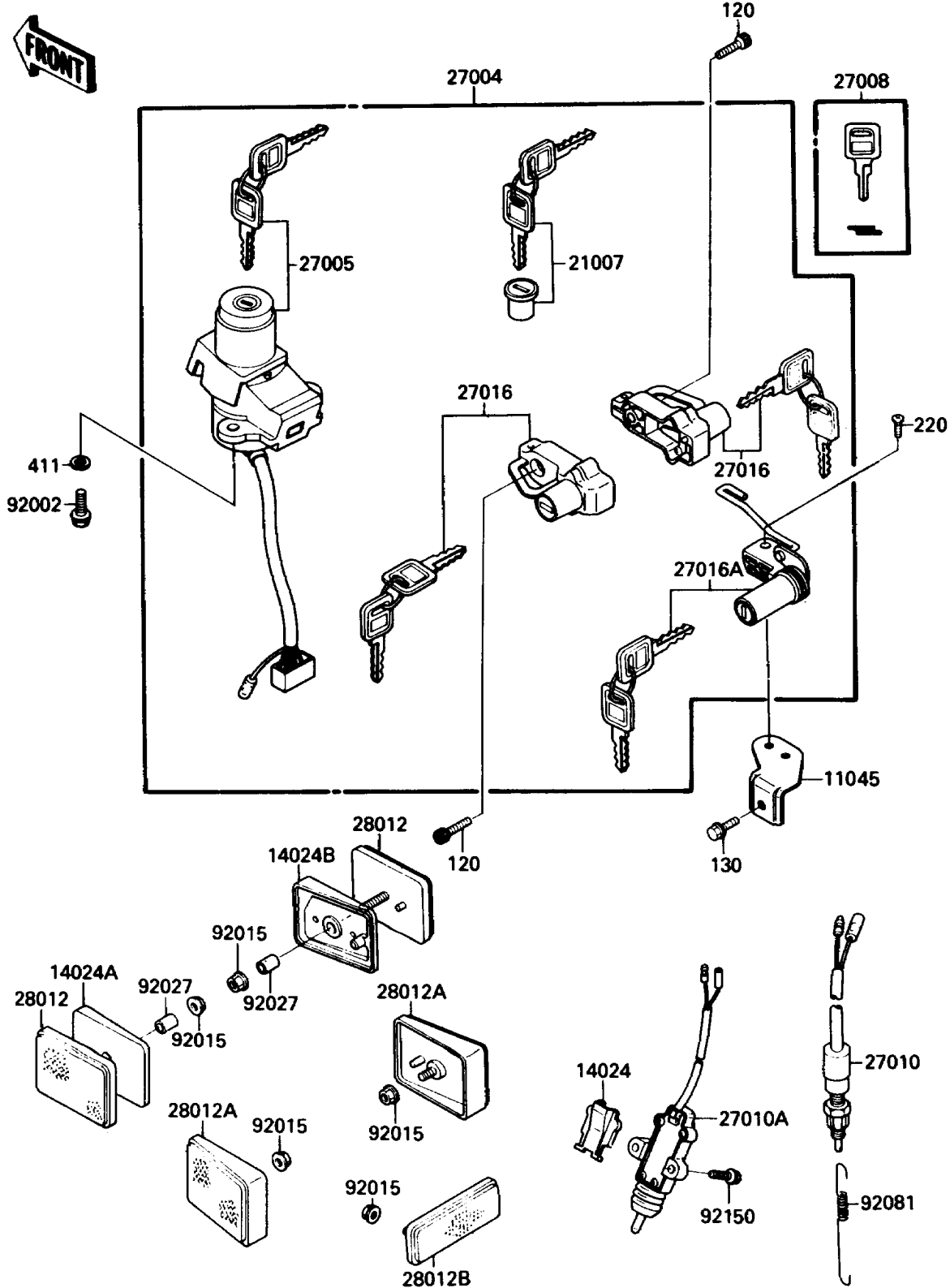


1989 Ninja® 600R PARTS DIAGRAM

Ignition Switch/Locks/Reflectors

F2770-0330



1989 Ninja® 600R PARTS LIST

Ignition Switch/Locks/Reflectors

| ITEM NAME | PART NUMBER | QUANTITY |
|--|-------------|----------|
| BRACKET,SEAT LOCK (Ref # 11045) | 11045-1605 | 1 |
| COVER,SIDE STAND SWITCH (Ref # 14024) | 14024-1532 | 1 |
| COVER,REFLECTOR,FR (Ref # 14024A) | 14025-1886 | 1 |
| COVER,REFLECTOR,FR (Ref # 14024B) | 14025-1887 | 1 |
| ROTOR,LOCK,TANK CAP (Ref # 21007) | 21007-5019 | 1 |
| SWITCH-ASSY (Ref # 27004) | 27004-5306 | 1 |
| SWITCH-ASSY-IGNITION (Ref # 27005) | 27005-5073 | 1 |
| KEY-LOCK,BLANK (Ref # 27008) | 27008-1103 | 1 |
| SWITCH,BRAKE LAMP (Ref # 27010) | 27010-1093 | 1 |
| SWITCH,SIDE STAND (Ref # 27010A) | 27010-1226 | 1 |
| LOCK-ASSY,HELMET (Ref # 27016) | 27016-5134 | 2 |
| LOCK-ASSY,SEAT (Ref # 27016A) | 27016-5135 | 1 |
| REFLECTOR-REFLEX,FR (Ref # 28012) | 28012-1052 | 2 |
| REFLECTOR-REFLEX,RR (Ref # 28012A) | 28012-1056 | 2 |
| REFLECTOR-REFLEX (Ref # 28012B) | 28012-1057 | 1 |
| BOLT,TORX,6X16 (Ref # 92002) | 92002-1333 | 2 |
| NUT,FLANGED,5MM (Ref # 92015) | 92015-1259 | 5 |
| COLLAR,5X8X14.5 (Ref # 92027) | 92027-1789 | 2 |
| SPRING,BRAKE LAMP SWITCH (Ref # 92081) | 92081-1704 | 1 |
| BOLT,SOCKET,5X20 (Ref # 92150) | 92150-1019 | 2 |
| BOLT-SOCKET,6X20 (Ref # 120) | 120S0620 | 2 |
| BOLT-FLANGED (Ref # 130) | 130B0614 | 1 |
| SCREW-PAN-CROS,6X12 (Ref # 220) | 220B0612 | 2 |
| WASHER-PLAIN,6MM (Ref # 411) | 411E0600 | 2 |