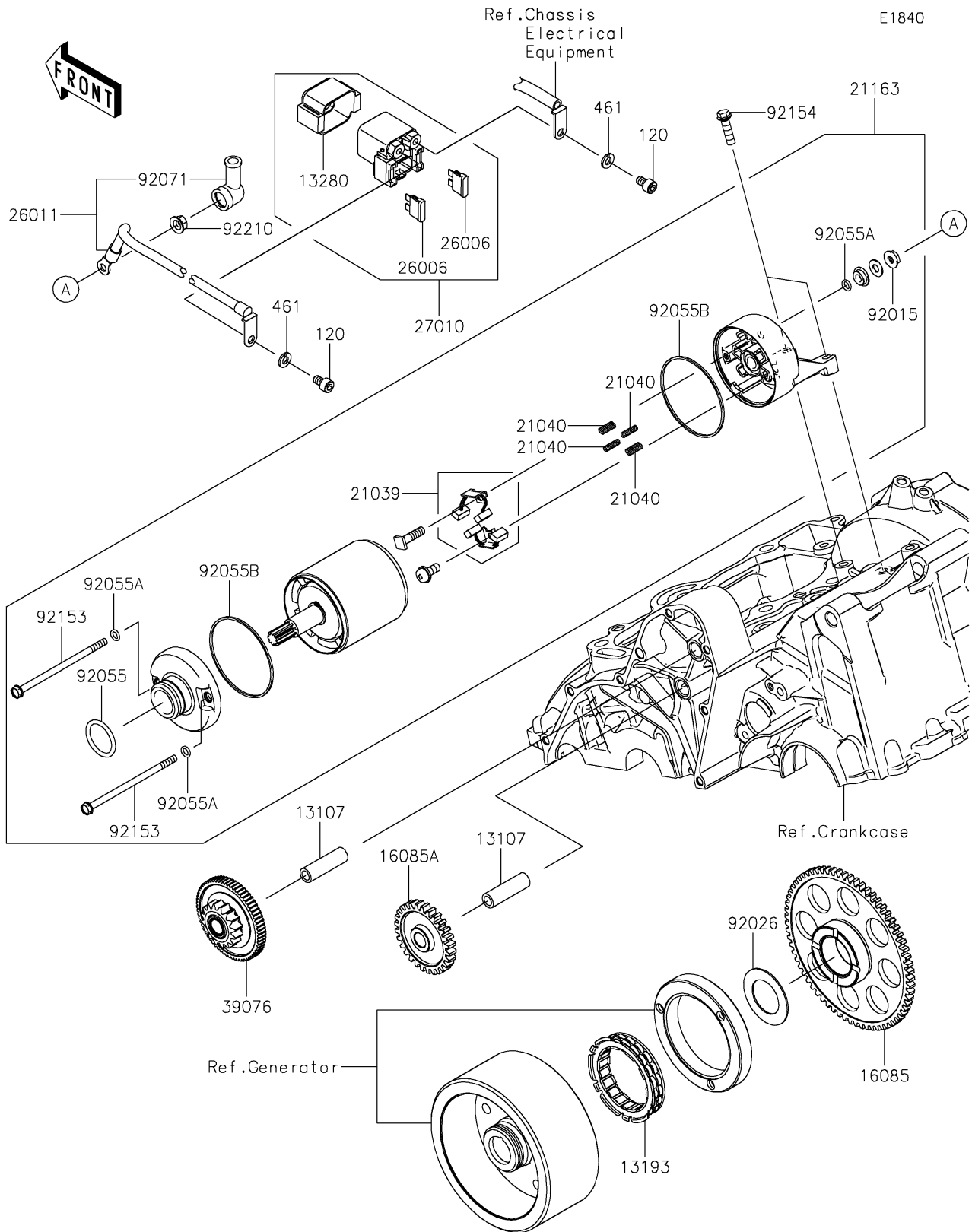


# 2025 Vulcan S PARTS DIAGRAM

## Starter Motor



## 2025 Vulcan S PARTS LIST

### Starter Motor

| ITEM NAME                           | PART NUMBER | QUANTITY |
|-------------------------------------|-------------|----------|
| SHAFT,IDLE GEAR (Ref # 13107)       | 13107-1106  | 2        |
| CLUTCH-ASSY-ONEWAY (Ref # 13193)    | 13193-0006  | 1        |
| HOLDER (Ref # 13280)                | 13280-0710  | 1        |
| GEAR,67T (Ref # 16085)              | 16085-0076  | 1        |
| GEAR,IDLE,28T (Ref # 16085A)        | 16085-0148  | 1        |
| BRUSH,CARBON (Ref # 21039)          | 21039-0004  | 1        |
| SPRING-BRUSH (Ref # 21040)          | 21040-0003  | 4        |
| STARTER-ELECTRIC (Ref # 21163)      | 21163-0040  | 1        |
| FUSE,BLADE,30A,GREEN (Ref # 26006)  | 26006-1006  | 2        |
| WIRE-LEAD (Ref # 26011)             | 26011-0859  | 1        |
| SWITCH,MAGNETIC (Ref # 27010)       | 27010-0709  | 1        |
| LIMITER,16T&66T (Ref # 39076)       | 39076-0034  | 1        |
| NUT,STARTER MOTOR (Ref # 92015)     | 92015-1476  | 1        |
| SPACER,29.1X47.5X1.2 (Ref # 92026)  | 92026-087   | 1        |
| RING-O (Ref # 92055)                | 92055-1276  | 1        |
| RING-O,4.5X2.0 (Ref # 92055A)       | 92055-1370  | 3        |
| RING-O,STARTER MOTOR (Ref # 92055B) | 92055-1381  | 2        |
| GROMMET (Ref # 92071)               | 92071-0024  | 1        |
| BOLT (Ref # 92153)                  | 92153-1783  | 2        |
| BOLT,FLANGED,6X22 (Ref # 92154)     | 92154-0504  | 2        |
| NUT,6MM (Ref # 92210)               | 92210-0188  | 1        |
| BOLT-SOCKET,6X10 (Ref # 120)        | 120CB0610   | 2        |
| WASHER-SPRING,6MM (Ref # 461)       | 461DB0600   | 2        |