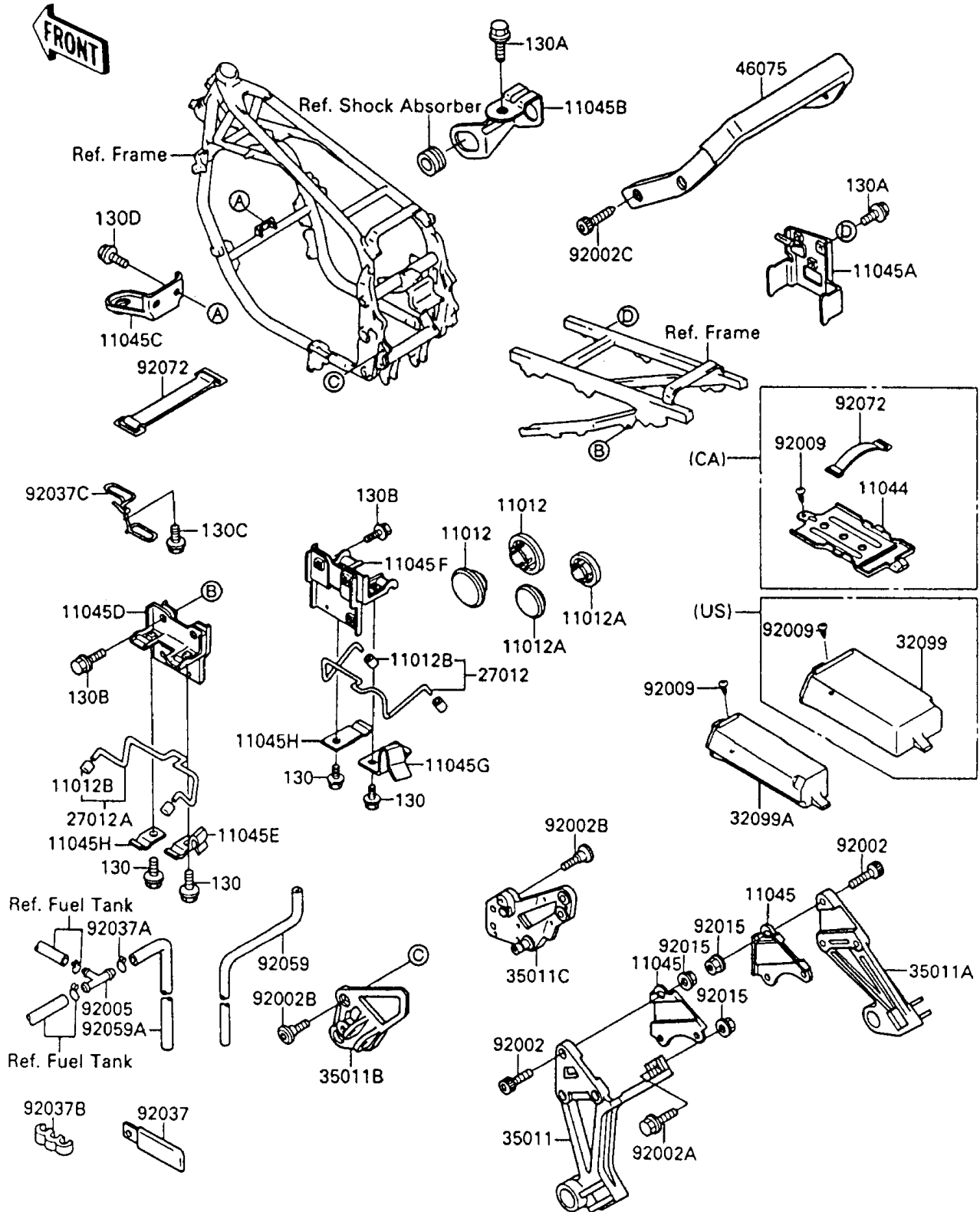


1994 Ninja® 600R PARTS DIAGRAM

Battery Case

F2132-0181



1994 Ninja® 600R PARTS LIST

Battery Case

| ITEM NAME | PART NUMBER | QUANTITY |
|--|-------------|----------|
| CAP,SWING ARM BRACKET (Ref # 11012) | 11012-1459 | 2 |
| CAP,SWING ARM BRACKET (Ref # 11012A) | 11012-1558 | 2 |
| CAP,BUNGEE CORD HOOK (Ref # 11012B) | 11012-1598 | 4 |
| BRACKET,CANISTER (Ref # 11044) | 11044-1133 | 1 |
| BRACKET,MUFFLER STAY (Ref # 11045) | 11045-1284 | 2 |
| BRACKET,REGULATOR (Ref # 11045A) | 11045-1599 | 1 |
| BRACKET,REAR SHOCKABSORBER (Ref # 11045B) | 11045-1600 | 1 |
| BRACKET,RADIATOR (Ref # 11045C) | 11045-1601 | 1 |
| BRACKET,BUNGEE CORD HOOK,LH (Ref # 11045D) | 11045-1602 | 1 |
| BRACKET,BUNGEE CORD HOOK,LH (Ref # 11045E) | 11045-1603 | 1 |
| BRACKET,BUNGEE CORD HOOK,RH (Ref # 11045F) | 11045-1890 | 1 |
| BRACKET,BUNGEE CORD HOOK,RH (Ref # 11045G) | 11045-1891 | 1 |
| BRACKET,BUNGEE CORD HOOK (Ref # 11045H) | 11045-1892 | 2 |
| HOOK,BUNGEE CORD,RH (Ref # 27012) | 27012-1366 | 1 |
| HOOK,BUNGEE CORD,LH (Ref # 27012A) | 27012-1382 | 1 |
| CASE (Ref # 32099) | 32099-1074 | 1 |
| CASE,TOOL (Ref # 32099A) | 32099-1075 | 1 |
| STAY,MUFFLER,LH (Ref # 35011) | 35011-1342 | 1 |
| STAY,MUFFLER,RH (Ref # 35011A) | 35011-1343 | 1 |
| STAY,STEP HOLDER,FR,LH (Ref # 35011B) | 35011-1344 | 1 |
| STAY,STEP HOLDER,FR,RH (Ref # 35011C) | 35011-1345 | 1 |
| GRIP,GRABRAIL (Ref # 46075) | 46075-1072 | 1 |
| BOLT,SOCKET,8X22 (Ref # 92002) | 92002-1334 | 6 |
| BOLT,FLANGED,8X20 (Ref # 92002A) | 92002-1417 | 1 |
| BOLT,SOCKET,8X20 (Ref # 92002B) | 92002-1493 | 4 |
| BOLT,SOCKET,6X24 (Ref # 92002C) | 92002-1511 | 4 |
| FITTING,T-TYPE (Ref # 92005) | 92005-1143 | 1 |
| SCREW,TAPPING,6MM (Ref # 92009) | 92009-1261 | 2 |
| NUT,FLANGED,8MM (Ref # 92015) | 92015-1406 | 3 |

1994 Ninja® 600R PARTS LIST

Battery Case

| ITEM NAME | PART NUMBER | QUANTITY |
|-------------------------------------|-------------|----------|
| CLAMP,WIRING HARNESS (Ref # 92037) | 92037-1069 | 1 |
| CLAMP (Ref # 92037A) | 92037-1712 | 1 |
| CLAMP,TUBE (Ref # 92037B) | 92037-1941 | 1 |
| CLAMP,TUBE (Ref # 92037C) | 92037-1942 | 1 |
| TUBE (Ref # 92059) | 92059-1821 | 1 |
| TUBE (Ref # 92059A) | 92059-1822 | 1 |
| BAND,L=142.1 (Ref # 92072) | 92072-006 | 2 |
| BAND,L=142.1 (Ref # 92072) | 92072-006 | 1 |
| BOLT-FLANGED,6X10,BLACK (Ref # 130) | 130C0610 | 4 |
| BOLT-FLANGED,6X12 (Ref # 130A) | 130C0612 | 3 |
| BOLT-FLANGED,6X14 (Ref # 130B) | 130C0614 | 4 |
| BOLT-FLANGED (Ref # 130C) | 130J0610 | 1 |
| BOLT-FLANGED,8X14 (Ref # 130D) | 130J0814 | 2 |