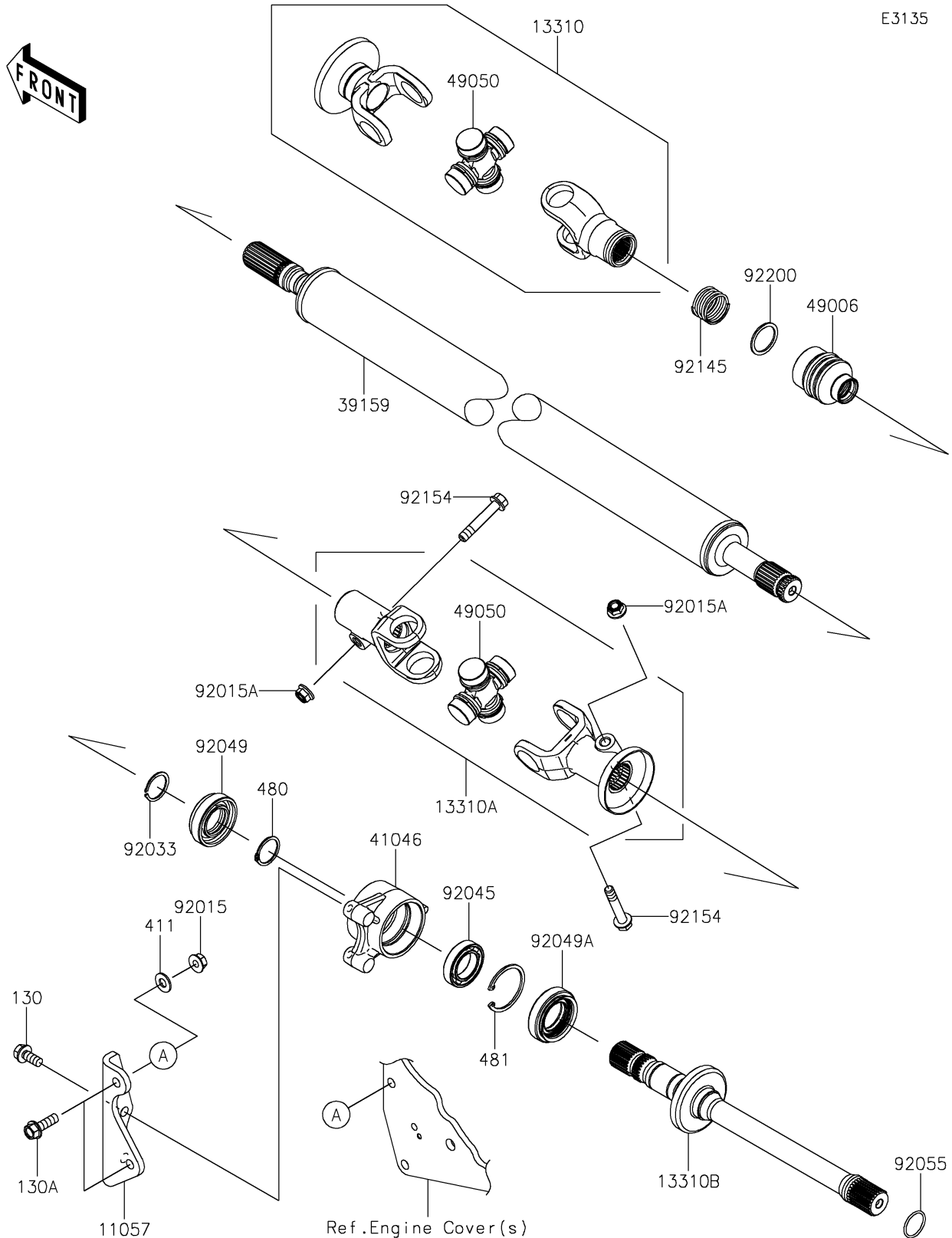


2022 TERYX KRX® 1000 TRAIL EDITION PARTS DIAGRAM

Drive Shaft-Propeller

E3135



2022 TERYX KRX® 1000 TRAIL EDITION PARTS LIST

Drive Shaft-Propeller

| ITEM NAME | PART NUMBER | QUANTITY |
|--|-------------|----------|
| BRACKET,BEARING-COMP (Ref # 11057) | 11057-2804 | 1 |
| SHAFT-ASSY,FRONT GEAR SIDE (Ref # 13310) | 13310-0031 | 1 |
| SHAFT-ASSY,REAR GEAR SIDE (Ref # 13310A) | 13310-0045 | 1 |
| SHAFT-ASSY (Ref # 13310B) | 13310-0046 | 1 |
| SHAFT-DRIVE (Ref # 39159) | 39159-0581 | 1 |
| HOUSING-BEARING (Ref # 41046) | 41046-0037 | 1 |
| BOOT,GEAR ASSY SIDE (Ref # 49006) | 49006-0108 | 1 |
| SPIDER (Ref # 49050) | 49050-0034 | 2 |
| NUT,FLANGED,8MM (Ref # 92015) | 92015-1014 | 2 |
| NUT,8MM (Ref # 92015A) | 92015-1432 | 2 |
| RING-SNAP,25MM (Ref # 92033) | 92033-1172 | 1 |
| BEARING-BALL,#6905 (Ref # 92045) | 92045-036 | 1 |
| SEAL-OIL,TC9Y 25X48X10X17.2 (Ref # 92049) | 92049-0817 | 1 |
| SEAL-OIL,TC9Y 28X50X10X17.2 (Ref # 92049A) | 92049-0818 | 1 |
| RING-O,22.1X1.9 (Ref # 92055) | 92055-1617 | 1 |
| SPRING (Ref # 92145) | 92145-1838 | 1 |
| BOLT,FLANGED,8X46 (Ref # 92154) | 92154-1365 | 2 |
| WASHER,25X31X1.5 (Ref # 92200) | 92200-0600 | 1 |
| BOLT-FLANGED,8X18 (Ref # 130) | 130BA0818 | 2 |
| BOLT-FLANGED,8X25 (Ref # 130A) | 130BA0825 | 2 |
| WASHER-PLAIN,8MM (Ref # 411) | 411AA0800 | 2 |
| CIRCLIP-TYPE-C,25MM (Ref # 480) | 480J2500 | 1 |
| CIRCLIP-TYPE-C,42MM (Ref # 481) | 481J4200 | 1 |