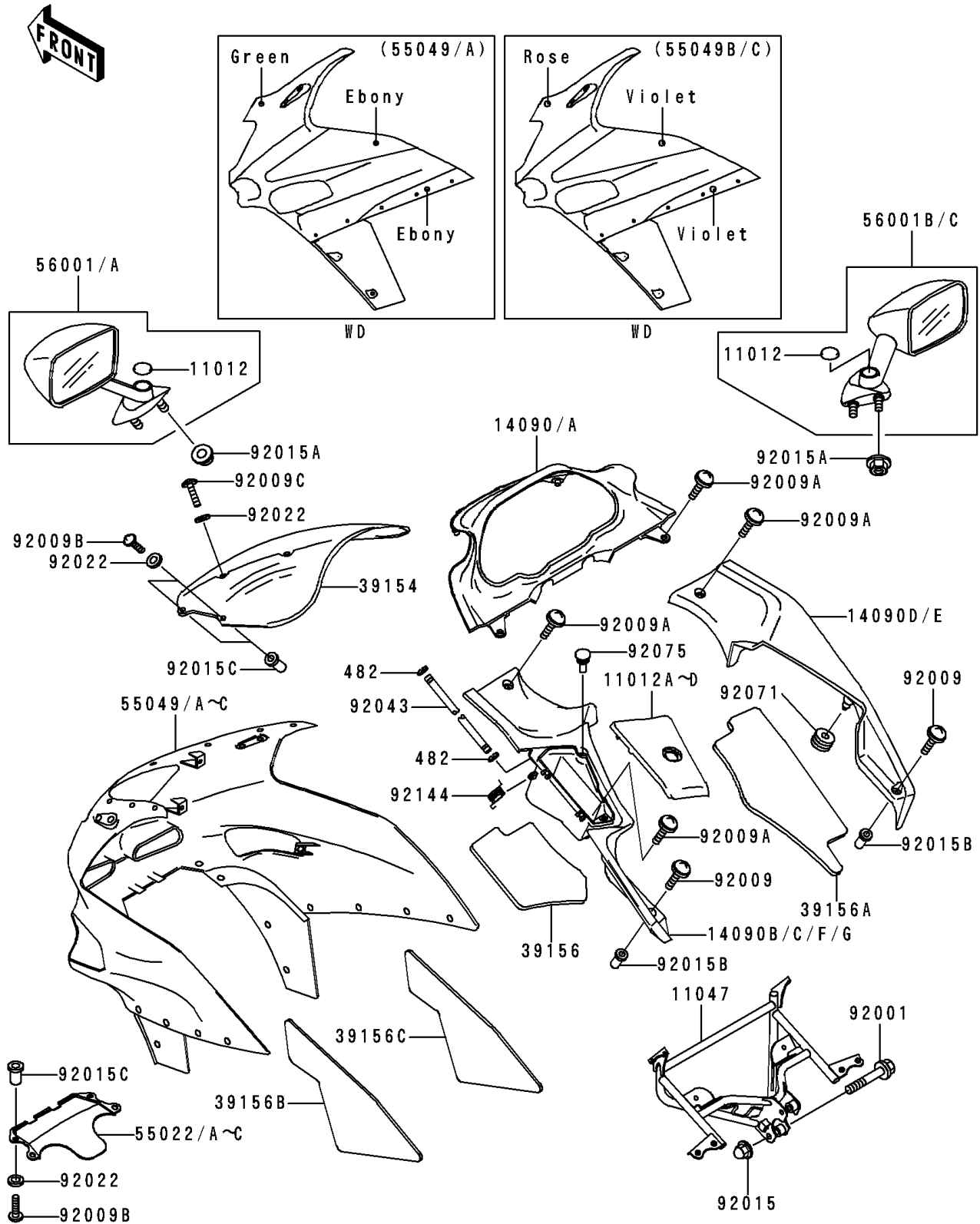


# 1993 Ninja® ZX™ -6 PARTS DIAGRAM

Cowling(ZX600-E1)

F2871



# 1993 Ninja® ZX™ -6 PARTS LIST

Cowling(ZX600-E1)

| ITEM NAME                                     | PART NUMBER   | QUANTITY |
|---|---------------|----------|
| CAP,MIRROR,BLACK (Ref # 11012)                | 11012-1751-6Z | 2        |
| BRACKET,UPP COWLING (Ref # 11047)             | 11047-1935    | 1        |
| WINDSHIELD (Ref # 39154)                      | 39154-1121    | 1        |
| PAD,INNER COWLING,LH (Ref # 39156)            | 39156-1364    | 1        |
| PAD,INNER COWLING,RH (Ref # 39156A)           | 39156-1365    | 1        |
| PAD,UPP COWLING,LH (Ref # 39156B)             | 39156-1366    | 1        |
| PAD,UPP COWLING,RH (Ref # 39156C)             | 39156-1367    | 1        |
| MIRROR-ASSY,LH,L.ROSE OPERA (Ref # 56001)     | 56001-1394-HC | 1        |
| MIRROR-ASSY,LH,P.T.GREEN (Ref # 56001A)       | 56001-1394-SM | 1        |
| MIRROR-ASSY,RH,L.ROSE OPERA (Ref # 56001B)    | 56001-1395-HC | 1        |
| MIRROR-ASSY,RH,P.T.GREEN (Ref # 56001C)       | 56001-1395-SM | 1        |
| BOLT,FLANGED,8X45 (Ref # 92001)               | 92001-1613    | 2        |
| SCREW,6X22,BLACK (Ref # 92009)                | 92009-1256    | 2        |
| SCREW,6X16 (Ref # 92009A)                     | 92009-1621    | 5        |
| SCREW,5X16 (Ref # 92009B)                     | 92009-1654    | 8        |
| SCREW,5X20 (Ref # 92009C)                     | 92009-1656    | 4        |
| CIRCLIP-TYPE-E,3MM (Ref # 482)                | 482L3000      | 2        |
| NUT,CAP,8MM,BLACK (Ref # 92015)               | 92015-1174    | 2        |
| NUT,FLANGED,6MM,BLACK (Ref # 92015A)          | 92015-1233    | 4        |
| NUT (Ref # 92015B)                            | 92015-1700    | 2        |
| NUT,WELL,5MM (Ref # 92015C)                   | 92015-1757    | 8        |
| WASHER,NYLON,5.3X11.5X1.5 (Ref # 92022)       | 92022-1521    | 12       |
| PIN,4X124.7 (Ref # 92043)                     | 92043-1477    | 1        |
| GROMMET (Ref # 92071)                         | 92071-056     | 1        |
| DAMPER (Ref # 92075)                          | 92075-1808    | 2        |
| SPRING (Ref # 92144)                          | 92144-1697    | 1        |
| CAP,INNER COWLING COVER,LH,GRA (Ref # 11012A) | 11012-1838-11 | 1        |
| CAP,INNER COWLING COVER,LH,GRA (Ref # 11012B) | 11012-1838-12 | 1        |
| CAP,INNER COWLING COVER,LH,GRA (Ref # 11012C) | 11012-1862-11 | 1        |

# 1993 Ninja® ZX™-6 PARTS LIST

Cowling(ZX600-E1)

| ITEM NAME                                     | PART NUMBER   | QUANTITY |
|---|---------------|----------|
| CAP,INNER COWLING COVER,LH,GRA (Ref # 11012D) | 11012-1862-12 | 1        |
| COVER,INNER COWLING,CNT,GRAY (Ref # 14090)    | 14090-1289-11 | 1        |
| COVER,INNER COWLING,CNT,GRAY (Ref # 14090A)   | 14090-1289-12 | 1        |
| COVER,INNER COWLING,LH,GRAY (Ref # 14090B)    | 14090-1290-11 | 1        |
| COVER,INNER COWLING,LH,GRAY (Ref # 14090C)    | 14090-1290-12 | 1        |
| COVER,INNER COWLING,RH,GRAY (Ref # 14090D)    | 14090-1291-11 | 1        |
| COVER,INNER COWLING,RH,GRAY (Ref # 14090E)    | 14090-1291-12 | 1        |
| COVER,INNER COWLING,LH,GRAY (Ref # 14090F)    | 14090-1358-11 | 1        |
| COVER,INNER COWLING,LH,GRAY (Ref # 14090G)    | 14090-1358-12 | 1        |
| COVER-HEAD LAMP,L.ROSE OPERA (Ref # 55022)    | 55022-1075-HC | 1        |
| COVER-HEAD LAMP,P.T.GREEN (Ref # 55022A)      | 55022-1075-SM | 1        |
| COVER-HEAD LAMP,P.T.GREEN (Ref # 55022B)      | 55022-1075-TZ | 1        |
| COVER-HEAD LAMP,L.ROSE OPERA (Ref # 55022C)   | 55022-1075-17 | 1        |
| COWLING.,UPP,EBONY/GREEN (Ref # 55049)        | 55049-5183-TL | 1        |
| COWLING.,UPP,EBONY/GREEN (Ref # 55049A)       | 55049-5183-VS | 1        |
| COWLING.,UPP,VIOLET/ROSE OPERA (Ref # 55049B) | 55049-5188-VX | 1        |
| COWLING.,UPP,VIOLET/ROSE (Ref # 55049C)       | 55049-5188-13 | 1        |