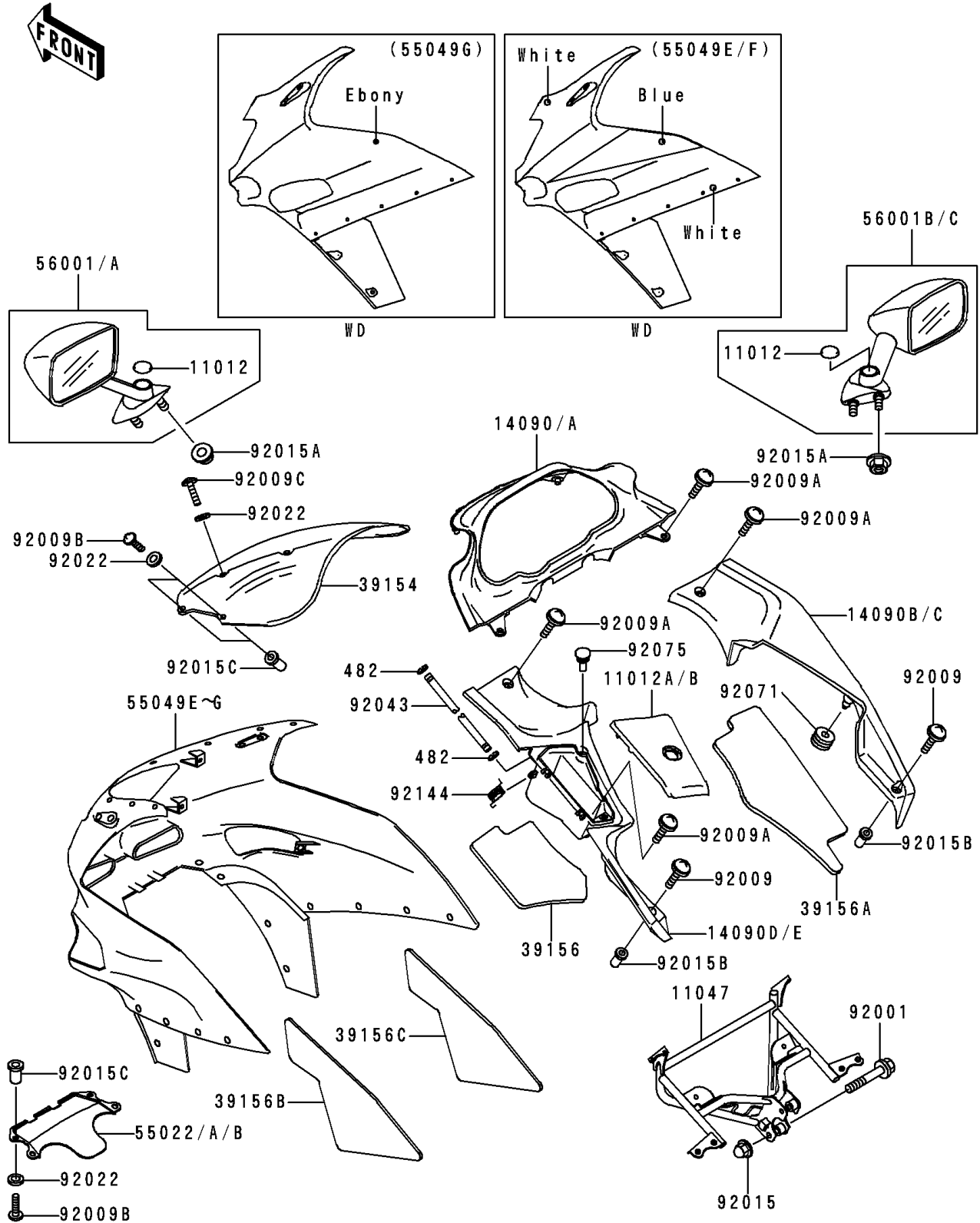


1994 Ninja® ZX™ -6 PARTS DIAGRAM

Cowling(ZX600-E2)

F2871A



1994 Ninja® ZX™ -6 PARTS LIST

Cowling(ZX600-E2)

ITEM NAME	PART NUMBER	QUANTITY
CAP,MIRROR,BLACK (Ref # 11012)	11012-1751-6Z	2
BRACKET,UPP COWLING (Ref # 11047)	11047-1935	1
WINDSHIELD (Ref # 39154)	39154-1121	1
PAD,INNER COWLING,LH (Ref # 39156)	39156-1364	1
PAD,INNER COWLING,RH (Ref # 39156A)	39156-1365	1
PAD,UPP COWLING,LH (Ref # 39156B)	39156-1366	1
PAD,UPP COWLING,RH (Ref # 39156C)	39156-1367	1
COVER-HEAD LAMP,EBONY (Ref # 55022A)	55022-1075-H8	1
COWLING.,UPP,EBONY (Ref # 55049G)	55049-5282-H8	1
CIRCLIP-TYPE-E,3MM (Ref # 482)	482L3000	2
MIRROR-ASSY,LH,EBONY (Ref # 56001)	56001-1394-H8	1
MIRROR-ASSY,LH,P.A.WHITE (Ref # 56001A)	56001-1394-R1	1
MIRROR-ASSY,RH,EBONY (Ref # 56001B)	56001-1395-H8	1
MIRROR-ASSY,RH,P.A.WHITE (Ref # 56001C)	56001-1395-R1	1
BOLT,FLANGED,8X45 (Ref # 92001)	92001-1613	2
SCREW,6X22,BLACK (Ref # 92009)	92009-1256	2
SCREW,6X16 (Ref # 92009A)	92009-1621	5
SCREW,5X16 (Ref # 92009B)	92009-1654	8
SCREW,5X20 (Ref # 92009C)	92009-1656	4
NUT,CAP,8MM,BLACK (Ref # 92015)	92015-1174	2
NUT,FLANGED,6MM,BLACK (Ref # 92015A)	92015-1233	4
NUT (Ref # 92015B)	92015-1700	2
NUT,WELL,5MM (Ref # 92015C)	92015-1757	8
WASHER,NYLON,5.3X11.5X1.5 (Ref # 92022)	92022-1521	12
PIN,4X124.7 (Ref # 92043)	92043-1477	1
GROMMET (Ref # 92071)	92071-056	1
DAMPER (Ref # 92075)	92075-1808	2
SPRING (Ref # 92144)	92144-1697	1
CAP,INNER COWLING COVER,LH,GRA (Ref # 11012A)	11012-1862-11	1

1994 Ninja® ZX™ -6 PARTS LIST

Cowling(ZX600-E2)

ITEM NAME	PART NUMBER	QUANTITY
CAP,INNER COWLING COVER,LH,GRA (Ref # 11012B)	11012-1862-12	1
COVER,INNER COWLING,CNT,GRAY (Ref # 14090)	14090-1289-11	1
COVER,INNER COWLING,CNT,GRAY (Ref # 14090A)	14090-1289-12	1
COVER,INNER COWLING,RH,GRAY (Ref # 14090B)	14090-1291-11	1
COVER,INNER COWLING,RH,GRAY (Ref # 14090C)	14090-1291-12	1
COVER,INNER COWLING,LH,GRAY (Ref # 14090D)	14090-1358-11	1
COVER,INNER COWLING,LH,GRAY (Ref # 14090E)	14090-1358-12	1
COVER-HEAD LAMP,P.A.WHITE (Ref # 55022)	55022-1075-GK	1
COVER-HEAD LAMP,P.A.WHITE (Ref # 55022B)	55022-1075-R1	1
COWLING.,UPP,P.A.WHITE (Ref # 55049E)	55049-5273-GK	1
COWLING.,UPP,P.A.WHITE (Ref # 55049F)	55049-5273-R1	1